

CITY OF BALTIMORE
DEPARTMENT OF GENERAL SERVICES
CAPITAL PROJECTS AND ENERGY DIVISION



CONTRACT NO. GS 21802

BALTIMORE CONVENTION CENTER
ELEVATOR REPLACEMENT

1 WEST PRATT STREET
BALTIMORE, MD 21201

FOR
THE MAYOR AND CITY COUNCIL
BRANDON M. SCOTT, MAYOR



REVISIONS		
NO	DATE	DESCRIPTION

CONTRACT NO. GS 21802

PROJECT TITLE: BALTIMORE CONVENTION CENTER ELEVATOR REPLACEMENT

BALTIMORE CONVENTION CENTER

CONSULTANTS

Gipe Associates Inc.
Consulting Engineers

ARCHITECTURE
KIN

STRUCTURAL
CANALBONDING, INC.

ELEVATOR
vda

COST ESTIMATOR
mk

PROFESSIONAL CERTIFICATION: I HEREBY CERTIFY THAT THESE DOCUMENTS WERE PREPARED OR APPROVED BY ME, AND THAT I AM A FULLY LICENSED PROFESSIONAL ENGINEER UNDER THE LAWS OF THE STATE OF MARYLAND. LICENSE NO. 20198, EXP. DATE: 11-15-2022.

SEAL

CITY OF BALTIMORE
DEPARTMENT OF GENERAL SERVICES
CAPITAL PROJECTS AND ENERGY DIVISION

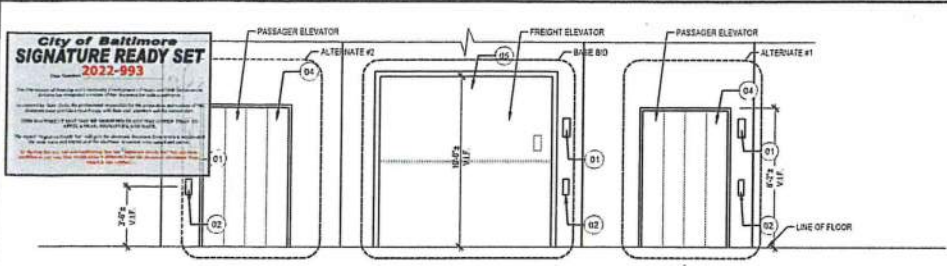
BID SET

NO	DATE	DESCRIPTION

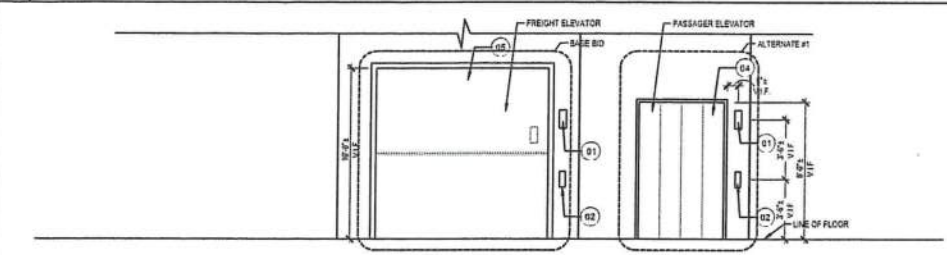
BALTIMORE CONVENTION CENTER
1 WEST PRATT STREET
BALTIMORE, MARYLAND 21201
ELEVATOR REPLACEMENT
CONTRACT NO. GS 21802

COVER SHEET

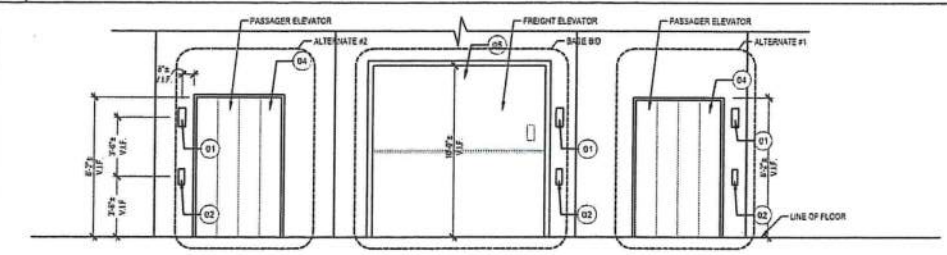
03/24/2022
SHEET CS-001
01 OF 13



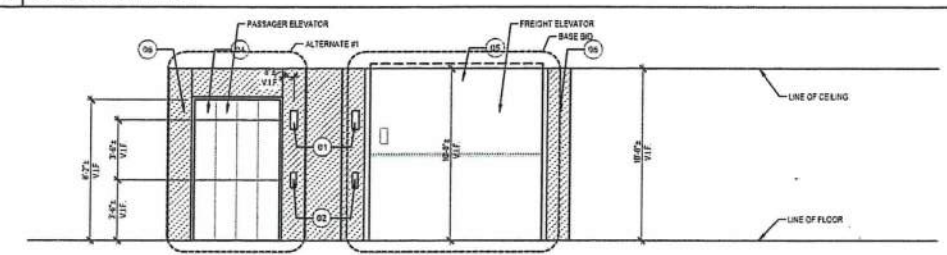
1 400 LEVEL ELEVATION SCALE: 1/4" = 1'-0"



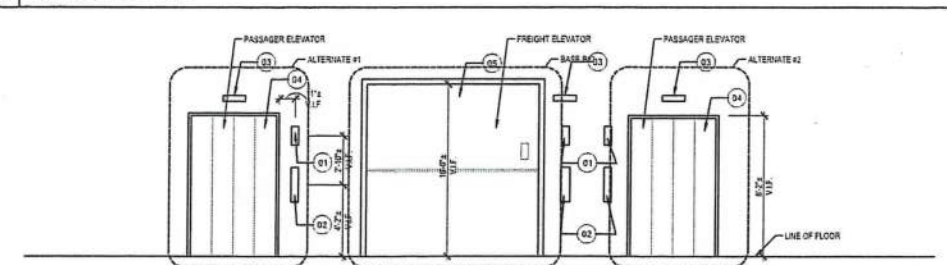
2 350 LEVEL ELEVATION SCALE: 1/4" = 1'-0"



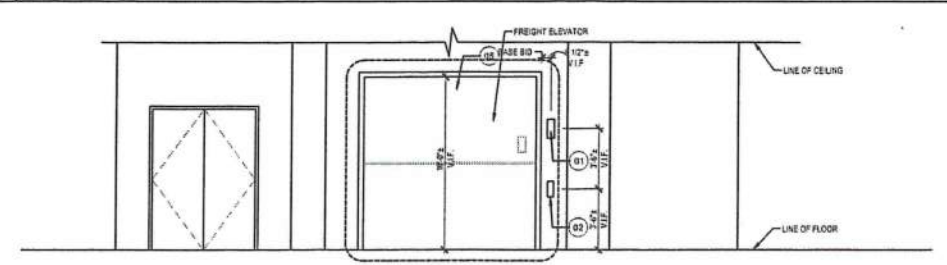
3 300 LEVEL ELEVATION SCALE: 1/4" = 1'-0"



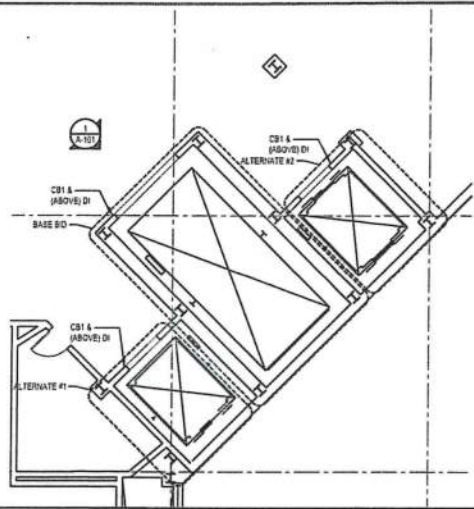
4 200 LEVEL ELEVATION SCALE: 1/4" = 1'-0"



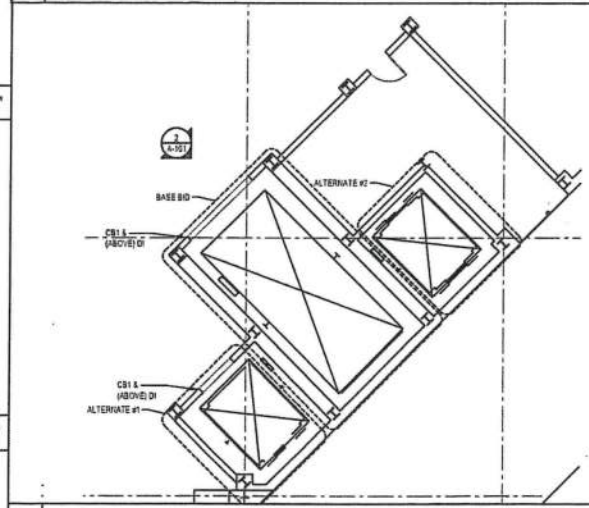
5 100 LEVEL ELEVATION - LOADING DOCK SCALE: 1/4" = 1'-0"



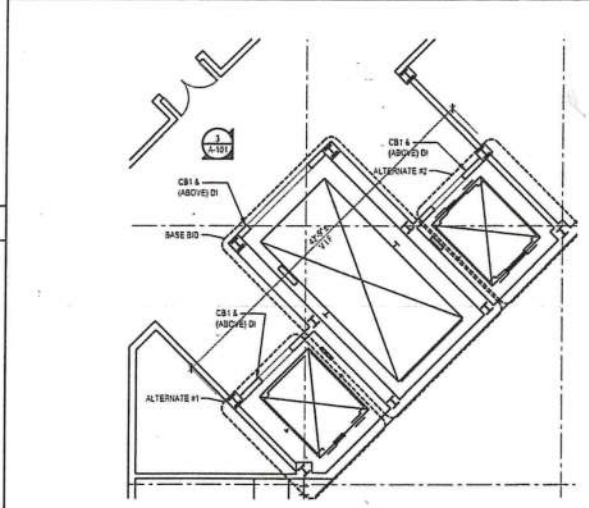
6 100R LEVEL ELEVATION SCALE: 1/4" = 1'-0"



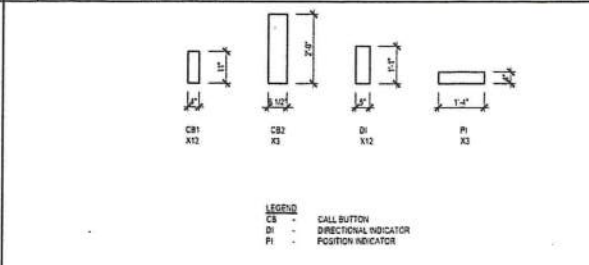
7 400 LEVEL FLOOR PLAN SCALE: 1/8" = 1'-0"



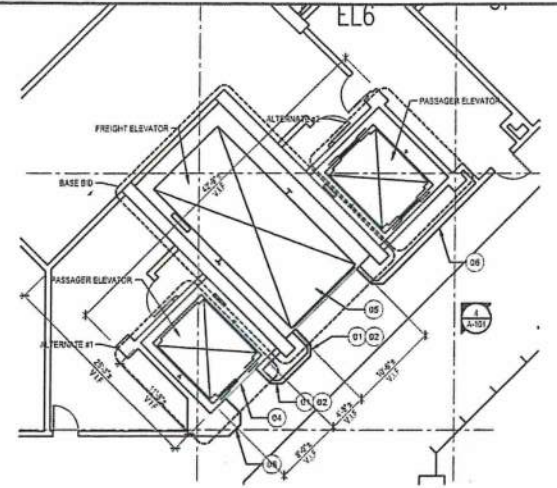
8 350 LEVEL FLOOR PLAN SCALE: 1/8" = 1'-0"



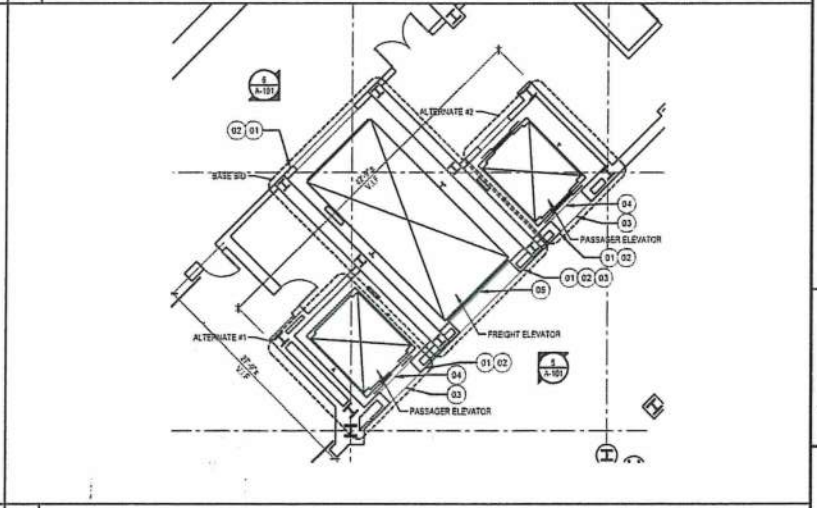
9 300 LEVEL FLOOR PLAN SCALE: 1/8" = 1'-0"



10 100 LEVEL FLOOR PLAN SCALE: 1/2" = 1'-0"



11 200 LEVEL FLOOR PLAN SCALE: 1/8" = 1'-0"



12 100 LEVEL FLOOR PLAN SCALE: 1/8" = 1'-0"

- ARCHITECTURAL NEW WORK NOTES:**
- 01) DISCONNECT AND REMOVE EXISTING DIRECTIONAL INDICATOR. INSTALL AND MAKE OPERATIONAL NEW DIRECTIONAL INDICATOR IN EXISTING LOCATION. NEW INDICATOR PLATE TO MATCH EXISTING SIZE, CAULK AND FINISH ALL JOINTS.
 - 02) DISCONNECT AND REMOVE EXISTING CALL BUTTON. INSTALL AND MAKE OPERATIONAL NEW CALL BUTTON IN EXISTING LOCATION. NEW CALL BUTTON PLATE TO MATCH EXISTING SIZE, CAULK AND FINISH ALL JOINTS.
 - 03) DISCONNECT AND REMOVE EXISTING POSITION INDICATOR. INSTALL AND MAKE OPERATIONAL NEW POSITION INDICATOR IN EXISTING LOCATION. NEW POSITION INDICATOR PLATE TO MATCH EXISTING SIZE, CAULK AND FINISH ALL JOINTS.
 - 04) EXISTING METAL PASSENGER ELEVATOR DOOR AND FRAME TO REMAIN.
 - 05) EXISTING METAL FREIGHT ELEVATOR DOOR AND FRAME TO REMAIN.
 - 06) PATCH AND PAINT EXISTING WALL AFTER INSTALLATION OF ELEVATOR BUTTONS AND INDICATORS. MATCH EXISTING COLOR.

ARCHITECTURAL GENERAL NOTES:

1. PROVIDE MISCELLANEOUS BLOCKING AS NEEDED.

STATE OF MARYLAND
JACOB T. PARRISH
ARCHITECT

AREA OF WORK

KEY PLAN

SCALE: NTS

BALTIMORE CONVENTION CENTER

CONSULTANTS

Gipe Associates Inc.
Consulting Engineers

ARCHITECTURE

STRUCTURAL

ELEVATOR

COST ESTIMATOR

100% SUBMISSION

BALTIMORE CONVENTION CENTER
1 W PRATT STREET
BALTIMORE, MARYLAND 21201
ELEVATOR REPLACEMENT
CONTRACT NO. BS 21802

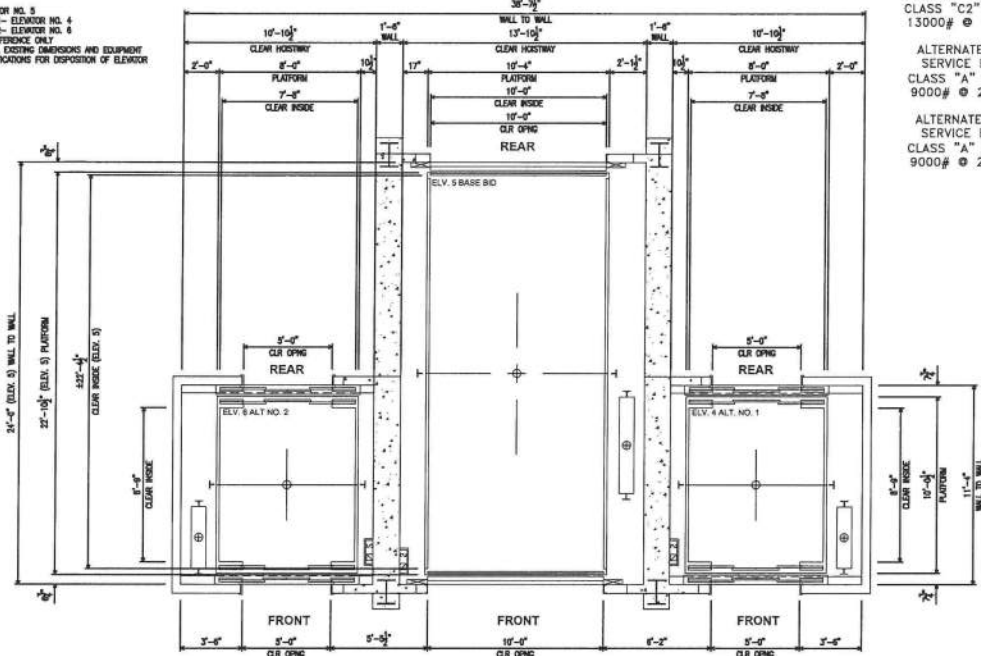
ELEVATOR PLANS & ELEVATIONS

03/24/2022

SHEET A-101

OF 57

GENERAL NOTES:
• BASE BID ELEVATOR NO. 5
• ALTERNATE NO. 1 - ELEVATOR NO. 4
• ALTERNATE NO. 2 - ELEVATOR NO. 6
• DRAWING FOR REFERENCE ONLY
• FIELD VERIFY ALL EXISTING DIMENSIONS AND EQUIPMENT
• REFER TO SPECIFICATIONS FOR DISPOSITION OF ELEVATOR EQUIPMENT

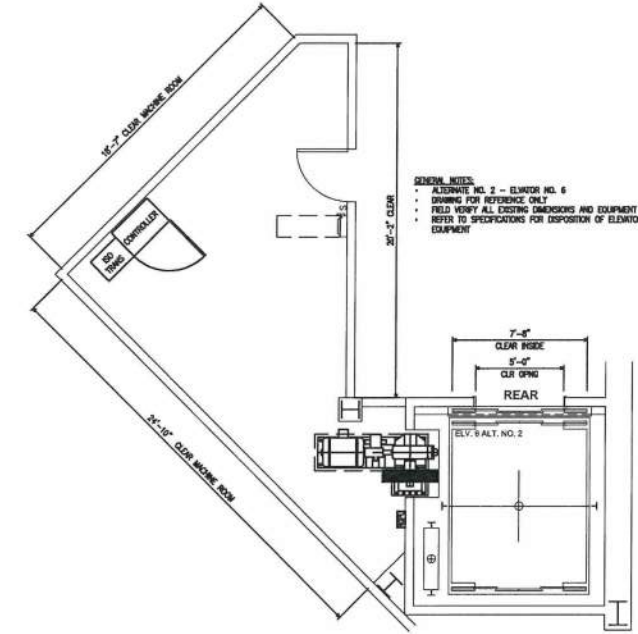


BASE BID
FREIGHT ELEV. NO. 5
CLASS "C2" LOADING
13000# @ 150 FPM

ALTERNATE NO. 1
SERVICE ELEV. 4
CLASS "A" LOADING
9000# @ 200 FPM

ALTERNATE NO. 2
SERVICE ELEV. 6
CLASS "A" LOADING
9000# @ 200 FPM

PROJECT: BALTIMORE CONVENTION CENTER ELEVATOR RENOVATIONS
TILE: HATCH PLAN
SCALE: NTS
DATE: 3/24/2022
REV: 12/7/2021 BD
REV: 4/5/2021 BD



GENERAL NOTES:
• ALTERNATE NO. 2 - ELEVATOR NO. 6
• DRAWING FOR REFERENCE ONLY
• FIELD VERIFY ALL EXISTING DIMENSIONS AND EQUIPMENT
• REFER TO SPECIFICATIONS FOR DISPOSITION OF ELEVATOR EQUIPMENT

- ELEVATOR NO. 6 (ALTERNATE NO. 2)
- REMOVE EXISTING / PROVIDE NEW
- CONTROLLER
 - TRAVELING CABLES / WIRING
 - GEARED HOIST MACHINE AND DEFLECTOR SHEAVES
 - HOIST MACHINE MOTOR
 - HOIST ROPES AND SHACKLES
 - GOVERNOR AND GOVERNOR ROPE
 - CAR AND COUNTERWEIGHT ROLLER GUIDES
 - CAR TOP EQUIPMENT
 - HOISTWAY SWITCHES
 - CAR AND HOISTWAY DOOR EQUIPMENT
 - CAR DOOR PANELS
 - CAB/CAR SHELL AND INTERIORS
 - CAR AND HALL FIXTURES
- RETAIN / RECONSTRUCTION
- HOISTWAY, CAR TOP AND COUNTERWEIGHT DEFLECTOR SHEAVES
 - CAR AND COUNTERWEIGHT BUFFERS
 - COUNTERWEIGHT ASSEMBLY / WEIGHTS
 - CAR FRAME, PLATFORM AND SAFETIES
 - HOISTWAY DOOR FRAMES
 - HOISTWAY DOOR PANELS

ALTERNATE NO. 2
SERVICE ELEV. 6
CLASS "A" LOADING
9000# @ 200 FPM

PROJECT: BALTIMORE CONVENTION CENTER ELEVATOR RENOVATIONS
TILE: MACHINE ROOM PLAN LVL 400
SCALE: NTS
DATE: 3/24/2022
REV: 12/7/2021 BD
REV: 4/5/2021 BD

BALTIMORE CONVENTION CENTER

CONSULTANTS

Gipe Associates Inc.
Consulting Engineers

ARCHITECTURE

STRUCTURAL

ELEVATOR

COST ESTIMATOR

SEAL

CITY OF BALTIMORE
DEPARTMENT OF
GENERAL SERVICES
CAPITAL PROJECTS
AND ENERGY DIVISION

BID SET

BALTIMORE CONVENTION CENTER
1 W PRATT STREET
BALTIMORE, MARYLAND 21201
ELEVATOR REPLACEMENT
CONTRACT NO. GS 21802

ELEVATOR
EQUIPMENT
ROOM
PART PLANS

03/24/2022

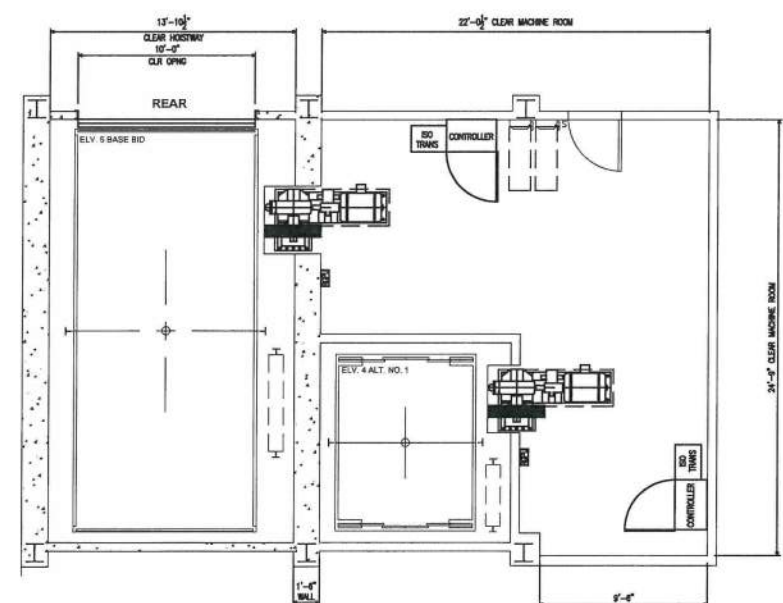
SHEET
EV-101

04 OF 13

ELEVATOR NO. 5 BASE BID
ELEVATOR NO. 4 ALTERNATE NO. 1

- REMOVE EXISTING / PROVIDE NEW
- CONTROLLERS
 - TRAVELING CABLES / WIRING
 - GEARED HOIST MACHINES AND DEFLECTOR SHEAVES
 - HOIST MACHINE MOTORS
 - HOIST ROPES AND SHACKLES
 - GOVERNORS AND GOVERNOR ROPES
 - CAR AND COUNTERWEIGHT ROLLER GUIDES (ELEVATOR NO. 4 ONLY)
 - CAR TOP EQUIPMENT
 - HOISTWAY SWITCHES
 - CAR AND HOISTWAY DOOR EQUIPMENT
 - CAR DOOR PANELS AND GATES
 - BI-PARTING HOISTWAY DOOR PANELS (ELEVATOR NO. 5 ONLY)
 - BI-PARTING HOISTWAY DOOR CONTROLLER (ELEVATOR NO. 5 ONLY)
 - CAB/CAR SHELLS AND INTERIORS
 - CAR AND HALL FIXTURES

- RETAIN / RECONSTRUCTION
- HOISTWAY, CAR TOP AND COUNTERWEIGHT DEFLECTOR SHEAVES
 - CAR AND COUNTERWEIGHT SLIDE GUIDES (ELEVATOR NO. 5 ONLY)
 - CAR AND COUNTERWEIGHT BUFFERS
 - COUNTERWEIGHT ASSEMBLY / WEIGHTS
 - CAR FRAMES, PLATFORMS AND SAFETIES
 - HOISTWAY DOOR FRAMES
 - HOISTWAY DOOR PANELS (ELEVATOR NO. 4 ONLY)

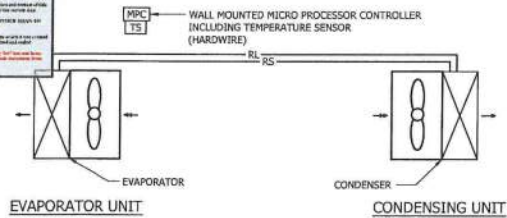


BASE BID
FREIGHT ELEV. NO. 5
CLASS "C2" LOADING
13000# @ 150 FPM






ALTERNATE NO. 1
SERVICE ELEV. 4
CLASS "A" LOADING
9000# @ 200 FPM







PROJECT: BALTIMORE CONVENTION CENTER ELEVATOR RENOVATIONS
TILE: MACHINE ROOM PLAN LVL 350
SCALE: NTS
DATE: 3/24/2022
REV: 12/7/2021 BD
REV: 4/5/2021 BD






TYPICAL DUCTLESS SPLIT HEAT PUMP UNIT CONTROL DIAGRAM

GENERAL MECHANICAL LEGEND	
SYMBOL	DEFINITION
	DIAMETER
	CONNECT TO EXISTING
	DEMOLITION ENDS HERE
	DRAWING NOTE DESIGNATION
	THERMOSTAT

LIFE SAFETY LEGEND	
SYMBOL	DEFINITION
	1 HOUR FIREWALL
	2 HOUR FIREWALL
	SMOKE PARTITION
	SMOKE BARRIER
	FIRE DAMPER
	MOTOR OPERATED DAMPER

MECHANICAL TERMINAL EQUIPMENT LEGEND	
SYMBOL	DEFINITION
	DSS WALL CASSETTE

GENERAL NOTES

1. ALL WORK SHALL BE PERFORMED IN ACCORDANCE WITH ALL STATE, COUNTY AND LOCAL CODES, REGULATIONS AND ORDINANCES. MATERIAL, EQUIPMENT, INSTALLATION, AND PROCEDURES SHALL BE IN STRICT ACCORDANCE WITH THE APPLICABLE REQUIREMENTS OF THE LATEST CURRENT EDITION OF THE REFERENCED DOCUMENTATION.
 - A. REGULATIONS OF LOCAL AUTHORITIES HAVING JURISDICTION.
 - B. NFPA-NATIONAL FIRE PROTECTION ASSOCIATION.
 - C. SMACNA - SHEET METAL AND AIR CONDITIONING NATIONAL ASSOCIATION.
 - D. ASME - AMERICAN SOCIETY OF MECHANICAL ENGINEERS.
 - E. ASTM - AMERICAN SOCIETY OF TESTING AND MATERIALS.
 - F. ASHRAE - AMERICAN SOCIETY OF HEATING, REFRIGERATION AND AIR CONDITIONING ENGINEERS, INC. LATEST EDITION OF STANDARD 15.
 - G. ASHRAE - AMERICAN SOCIETY OF HEATING, REFRIGERATION AND AIR CONDITIONING ENGINEERS, INC. LATEST EDITION OF STANDARD 90.1 - 2007 (LEED COMPLIANCE), 2013 CODE COMPLIANCE.
 - H. INTERNATIONAL BUILDING CODE - 2018.
 - I. INTERNATIONAL ENERGY CONSERVATION CODE - 2018.
 - J. INTERNATIONAL FIRE CODE - 2018.
 - K. INTERNATIONAL FUEL GAS CODE - 2018.
 - L. INTERNATIONAL GREEN CONSTRUCTION CODE -2018.
 - M. INTERNATIONAL MECHANICAL CODE - 2018.
 - N. INTERNATIONAL PLUMBING CODE - 2018.
2. CONTRACTORS SHALL BE RESPONSIBLE TO VERIFY AND FAMILIARIZE THEMSELVES WITH ACTUAL FIELD CONDITIONS ASSOCIATED WITH WORK UNDER THIS CONTRACT PRIOR TO SUBMITTING THEIR BID.
3. THE LOCATION OF EXISTING UNDERGROUND UTILITIES IS SHOWN IN AN APPROXIMATE WAY ONLY. DETERMINE THE EXACT LOCATION OF ALL EXISTING UTILITIES BEFORE COMMENCING WORK. REPAIR ALL DAMAGES OCCASIONED BY FAILURE TO EXACTLY LOCATE AND PRESERVE ANY AND ALL UNDERGROUND UTILITIES.
4. RUN ALL CONDENSATE DRAIN PIPING WITH 2% MINIMUM GRADE UNLESS OTHERWISE NOTED.
5. UNLESS OTHERWISE NOTED, ALL PIPING AND DUCTWORK IS OVERHEAD, TIGHT TO UNDERSIDE OF SLAB AND STRUCTURE, WITH SPACE FOR INSULATION, IF REQUIRED.
6. INSTALL PIPING AND DUCTWORK SO THAT ALL VALVES AND DAMPERS ARE ACCESSIBLE.
7. COORDINATE ALL MECHANICAL WORK WITH OTHER TRADES INCLUDING BUT NOT LIMITED TO PLUMBING WORK, FIRE PROTECTION, ELECTRICAL, STRUCTURAL, AND ARCHITECTURAL WORK ETC., SHOWN ON OTHER DRAWINGS.
8. MAINTAIN MINIMUM 6"-8" CLEARANCE TO UNDERSIDE OF PIPES, DUCTS, CONDUIT, SUSPENDED EQUIPMENT, ETC., THROUGHOUT ACCESS ROUTES IN MECHANICAL AND ELECTRICAL ROOMS.
9. CERTAIN ITEMS SUCH AS CLEAN-OUTS, ACCESS DOORS, RISES AND DROPS IN DUCTWORK AND PIPING, ETC., ARE INDICATED ON THE DRAWINGS FOR CLARITY OR A SPECIFIC LOCATION REQUIREMENT AND SHALL NOT BE INTERPRETED AS THE EXTENT OF THE REQUIREMENTS FOR THOSE ITEMS. THE CONTRACTOR SHALL BE RESPONSIBLE FOR THESE ITEMS AS REQUIRED ELSEWHERE IN THE CONTRACT DOCUMENTS.
10. EQUIPMENT CONNECTION SIZES MAY DIFFER FROM INDICATED DUCT OR PIPE SIZES. PROVIDE APPROPRIATE TRANSITIONS WHERE REQUIRED.
11. THE DRAWINGS ARE DIAGRAMMATIC AND ALL OFFSETS, FITTINGS, TRANSITIONS AND ACCESSORIES ARE NOT NECESSARILY SHOWN. COORDINATE THE INSTALLATION OF ALL PIPING, DUCTWORK, EQUIPMENT AND OTHER WORK WITH ALL OTHER TRADES.
12. IT IS THE INTENT THAT ALL WORK SHALL BE COMPLETE IN EVERY RESPECT AND THAT MATERIAL OR WORK SPECIFICALLY NOT INDICATED ON THE DRAWINGS, BUT NECESSARY TO COMPLETE THE WORK, SHALL BE PROVIDED.
13. ALL AUTOMATIC TEMPERATURE CONTROL SETPOINTS SHALL BE ADJUSTABLE.
14. PROVIDE A MINIMUM OF 42-INCHES OF CLEARANCE TO ALL EQUIPMENT THE ELECTRICAL COMPONENT LOCATIONS.
15. CONTRACTOR IS PROHIBITED FROM ATTACHING TO THE ROOF DECK AND LOWER CHORD OF JOISTS AS A SUPPORT SYSTEM FOR DEVICES AND BUILDING SYSTEMS.
16. CONTRACTOR SHALL REPAIR ALL PENETRATION HOLES IN WALLS, FLOORS, CEILINGS AND ROOF AS A RESULT OF DEMOLITION WORK. REPAIRS SHALL MATCH ADJACENT CONSTRUCTION.
17. ALL PIPE PENETRATIONS IN EXPOSED AREAS SHALL HAVE ESCUTCHEON PLATES.
18. PROVIDE ALL NECESSARY COMPONENTS FOR U.L. LISTED THROUGH PENETRATION SYSTEM AT RATED FLOORS, CEILING AND WALL PENETRATIONS IN ORDER TO MAINTAIN THE REQUIRED ASSEMBLY RATING. REFER TO ARCHITECTURAL DRAWINGS FOR RATED ASSEMBLY LOCATIONS AND CONSTRUCTION.
19. INSTALL ALL WORK SO THAT PARTS REQUIRING PERIODIC INSPECTION, OPERATION, MAINTENANCE, AND REPAIR ARE READILY ACCESSIBLE. INSTALL CONGOLEATED VALVES, EXPANSION JOINTS, CONTROLS, DAMPERS, AND EQUIPMENT REQUIRING ACCESS IN LOCATIONS FREELY ACCESSIBLE THROUGH ACCESS DOORS NOT LESS THAN 18-INCHES.
20. ALL CONDENSATE DRAIN PANS SHALL BE TESTED WITH AN ALTERNATE SOURCE OF WATER IF THE UNIT IS NOT PRODUCING CONDENSATE IN SUFFICIENT QUANTITIES TO FLOOD THE PAN AND DRAIN.
21. THE PROJECT SHALL BE PHASED. THE FIRST ELEVATOR TO BE REPLACED SHALL BE ELEVATOR NO.6. THE SECOND ELEVATOR TO BE REPLACED SHALL BE ELEVATOR NO.4. ELEVATOR NO.5 SHALL BE THE FINAL ELEVATOR REPLACED.

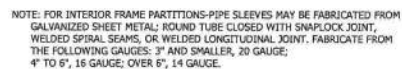
NOTES: 1. BASED ON MITSUBISHI ELECTRIC MR. SJLM WITH ADVANCED MICROPROCESSOR CONTROLLER, INVERTER DRIVEN COMPRESSOR R410A REFRIGERANT AND DEHUMIDIFICATION MODE, 100' REFRIGERANT LINE LENGTH, 100' LIFT.

2. LOW AMBIENT CONTROL (COOLING TO 0°F OUTDOOR AIR TEMPERATURE).

3. ALL UNITS SHALL BE PROVIDED WITH INTEGRAL CONDENSATE DRAIN PUMPS.

4. INDOOR UNIT ELECTRICAL CHARACTERISTICS: 208V/1/60HZ.

5. MINIMUM SEER: DSS-1 = 15.3; DSS-2 = 14.0



SCALE: NONE



SCALE: NONE



GENERAL
NOTES
ABBREVIATIONS
AND LEGENDS

SHEET
M-000

06 OF 13

GENERAL NOTES:

1. EX INDICATED IN THIN/LIGHT LINE WEIGHT.
2. DEMOLITION WORK INDICATED IN WIDER/DARKER LINE WEIGHT.

DRAWING NOTES:

1. RX 1-1/2" CD DN TO OPEN HUB DRAIN. RX DRAIN OPEN HUB DRAIN TO BELOW SLAB AND CAP. REPAIR SLAB TO MATCH EX.
2. REPAIR SLAB TO MATCH EX (TYP).
3. REPAIR WALL TO MATCH EX (TYP).



BALTIMORE
CONVENTION
CENTER

CONSULTANTS

Gipe Associates Inc.
Consulting Engineers

1000 W. Pratt Street, Suite 200
Baltimore, MD 21201
PH: (410) 528-1100

ARCHITECTURE
1000 W. Pratt Street, Suite 200
Baltimore, MD 21201
PH: (410) 528-1100

STRUCTURAL
1000 W. Pratt Street, Suite 200
Baltimore, MD 21201
PH: (410) 528-1100

ELEVATOR
1000 W. Pratt Street, Suite 200
Baltimore, MD 21201
PH: (410) 528-1100

ESTIMATOR
1000 W. Pratt Street, Suite 200
Baltimore, MD 21201
PH: (410) 528-1100

PROFESSIONAL CERTIFICATION: I HEREBY
CERTIFY THAT THESE DOCUMENTS WERE
PREPARED OR SUPERVISED BY ME, AND THAT I
AM A STATE LICENSED PROFESSIONAL ENGINEER
UNDER THE LAWS OF THE STATE OF MARYLAND
LICENSE NO. 2022, EXP. DATE: 12-31-2025

SEAL

CITY OF BALTIMORE
DEPARTMENT OF
GENERAL SERVICES
CAPITAL PROJECTS
AND ENERGY DIVISION

BID SET

NO. DATE DESCRIPTION

1 03/24/2022

2 03/24/2022

3 03/24/2022

4 03/24/2022

5 03/24/2022

6 03/24/2022

7 03/24/2022

8 03/24/2022

9 03/24/2022

10 03/24/2022

11 03/24/2022

12 03/24/2022

13 03/24/2022

14 03/24/2022

15 03/24/2022

16 03/24/2022

17 03/24/2022

18 03/24/2022

19 03/24/2022

20 03/24/2022

21 03/24/2022

22 03/24/2022

23 03/24/2022

24 03/24/2022

25 03/24/2022

26 03/24/2022

27 03/24/2022

28 03/24/2022

29 03/24/2022

30 03/24/2022

31 03/24/2022

32 03/24/2022

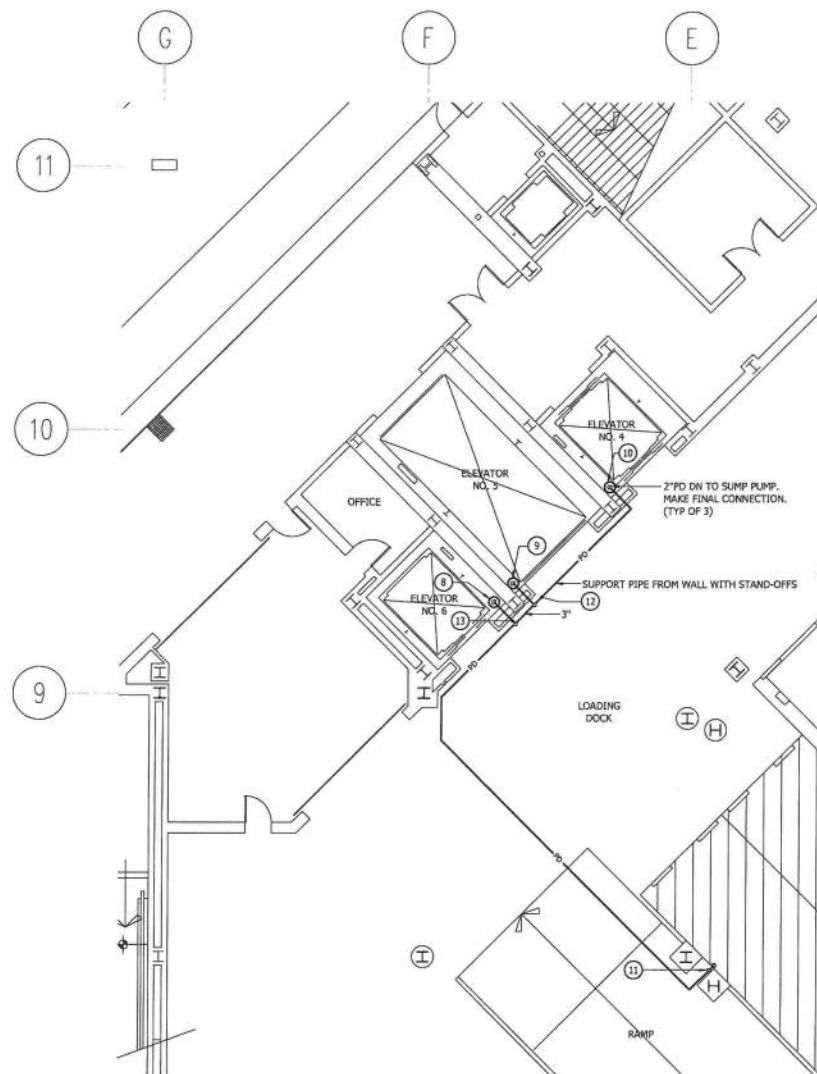
33 03/24/2022

34 03/24/2022

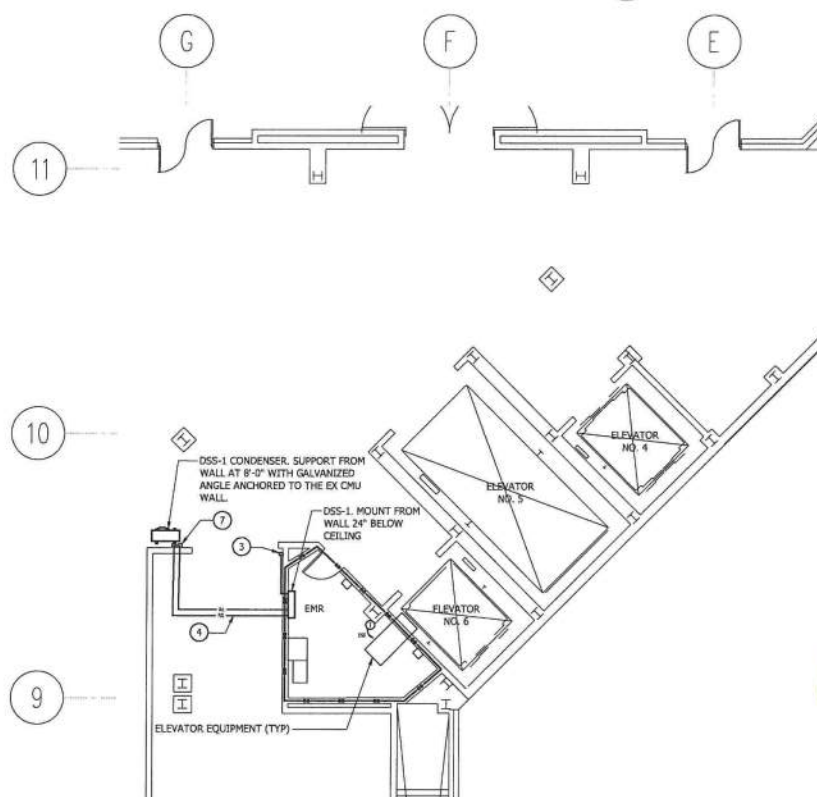
ELEVATOR PART PLAN - LEVEL 350
SCALE: 1/8" = 1'-0"
BASE BID
(NOTE: ALL WORK ON THIS PLAN IS BASE BID WORK)

ELEVATOR PART PLAN - LEVEL 400
SCALE: 1/8" = 1'-0"
ALTERNATE NO.2





ELEVATOR PART PLAN - LEVEL 100
SCALE: 1/8" = 1'-0"



ELEVATOR PART PLAN - LEVEL 400
SCALE: 1/8" = 1'-0"

5/5/2022 Page 8 of 13.

GENERAL NOTES:

- EX INDICATED IN THIN/LIGHT LINE WEIGHT.
- NEW WORK INDICATED IN WIDER/DARKER LINE WEIGHT.
- NO NEW PIPING SHALL BE INSTALLED ABOVE THE ELECTRICAL OR ELEVATOR EQUIPMENT.
- CONTRACTOR SHALL DRAIN DOWN THE SPRINKLER SYSTEM AS NEEDED TO PERFORM THE WORK. SPRINKLER WORK SHALL BE IN ACCORDANCE WITH NFPA 13. SUBMIT FOR PERMITS AS REQUIRED. SPRINKLER PIPE SHALL BE BLACK STEEL, SCHEDULE 40, ASTM A120, WITH THREADED ENDS AND FITTINGS. SPRINKLER HEADS SHALL BE 1/2-INCH EXPOSED UPRIGHT OR PENDENT HEADS EQUAL TO YIKING V27. SPRINKLERS SHALL BE BRASS WITH FRANGIBLE GLASS BULB.
- THERMOSTAT WIRING SHALL BE INSTALLED IN SURFACE MOUNTED CONDUIT.
- UNLESS OTHERWISE INDICATED WORK SHALL BE BASE BID. PROVIDE CAPS ON BASE BID PIPING OPEN ENDS. REMOVE CAPS ASSOCIATED WITH EACH ALTERNATE.

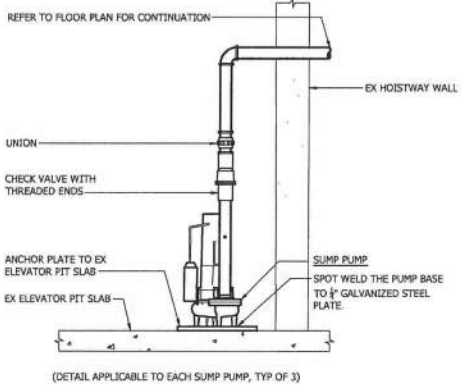
DRAWING NOTES:

- SUPPORT FROM WALL ABOVE DOOR.
- REFRIGERANT SUCTION AND LIQUID PIPING, SUPPORT FROM WALL AND FLOOR, SIZE PIPING IN ACCORDANCE WITH MANUFACTURER'S RECOMMENDATIONS, 1" CD DN, CX CD BELOW THE SLAB.
- REFRIGERANT SUCTION AND LIQUID PIPING, SIZE PIPING IN ACCORDANCE WITH MANUFACTURER'S RECOMMENDATIONS.
- 36"X, 2" OPEN HUB DRAIN WITH BWH IN VERTICAL. PIPE TO 10"SW BELOW SLAB APPROXIMATELY 12 FT.
- PIPE 1" CD TO OPEN HUB DRAIN.
- SUPPORT FROM WALL.
- ELEVATOR NO.6 SUMP PUMP-1.
- ELEVATOR NO.5 SUMP PUMP-2.
- ELEVATOR NO.4 SUMP PUMP-3.
- 3"PD ON ALONG COLUMN, SUPPORT FROM COLUMN WITH STAND-OFFS. TERMINATE WITH 90 DEGREE ELBOW TO DISCHARGE INTO LOADING DOCK BAY.
- PIPING FROM THIS POINT BACK TO THE SUMP PUMP SHALL BE ALTERNATE NO.1
- PIPING FROM THIS POINT BACK TO THE SUMP PUMP SHALL BE ALTERNATE NO.2

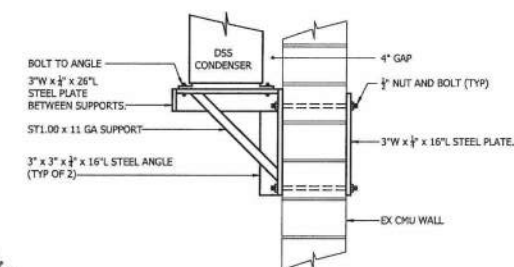
ELEVATOR NO.4, NO.5 AND NO.6 SUMP PUMPS:

SIMPLEX, SINGLE SEAL, SUMP PUMP WITH INTEGRAL FLOAT OPERATED MECHANICAL SWITCH, CONSTRUCTED WITH SAE 1117 CARBON STEEL MOTOR, SHAFT, UPPER AND LOWER BALL BEARINGS, CARBON AND CERAMIC MECHANICAL SEALS, NON-CLOGGING BRONZE VORTEX IMPELLER, NEOPRENE SQUARE RING AND GASKET, 20 FT CHORD WITH PLUG, AUTO RESET THERMAL OVERLOAD, PSC MOTOR WITH CLASS B INSULATION AND 2" DISCHARGE CONNECTION.

CAPACITY: 50 GPM @ 30 FT.
ELECTRICAL: 1/2 HP, 115V, 1PH, 3450 RPM.



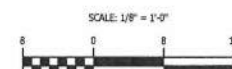
(DETAIL APPLICABLE TO EACH SUMP PUMP, TYP OF 3)



- NOTES:
- ALL JOINTS SHALL BE A CONTINUOUS WELD.
 - TWO SUPPORTS PER CONDENSER UNIT, 20"OC.

WALL MOUNTED CONDENSER UNIT DETAIL

NOT TO SCALE



KEY PLAN

BALTIMORE CONVENTION CENTER

CONSULTANTS

Gipe Associates Inc.
Consulting Engineers

ARCHITECTURE

STRUCTURAL

ELEVATOR

COST ESTIMATOR

PROFESSIONAL CERTIFICATION: I HAVE PREPARED AND APPROVED THESE DOCUMENTS UNDER THE LAWS OF THE STATE OF MARYLAND. LICENSE NO. 20222, EXP. DATE: 12-31-2025.

SEAL

CITY OF BALTIMORE
DEPARTMENT OF GENERAL SERVICES
CAPITAL PROJECTS AND ENERGY DIVISION

BID SET

NO.	DATE	DESCRIPTION

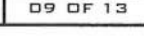
BALTIMORE CONVENTION CENTER
1 W PRATT STREET
BALTIMORE, MARYLAND 21201
ELEVATOR REPLACEMENT
CONTRACT NO. 05 21802

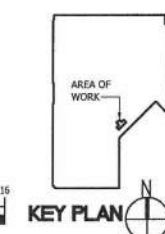
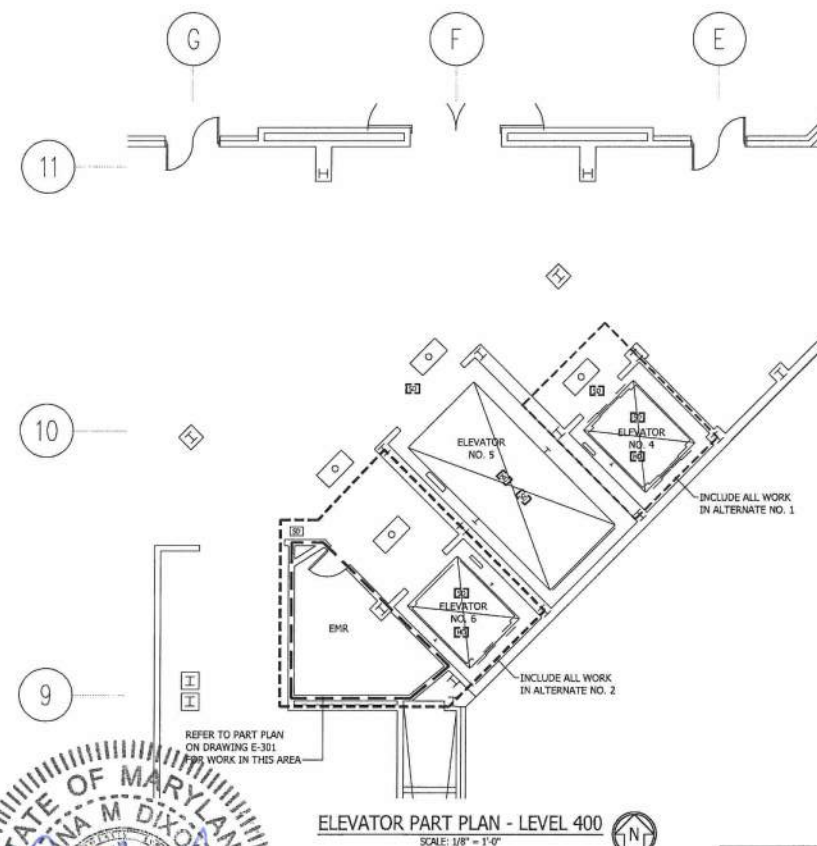
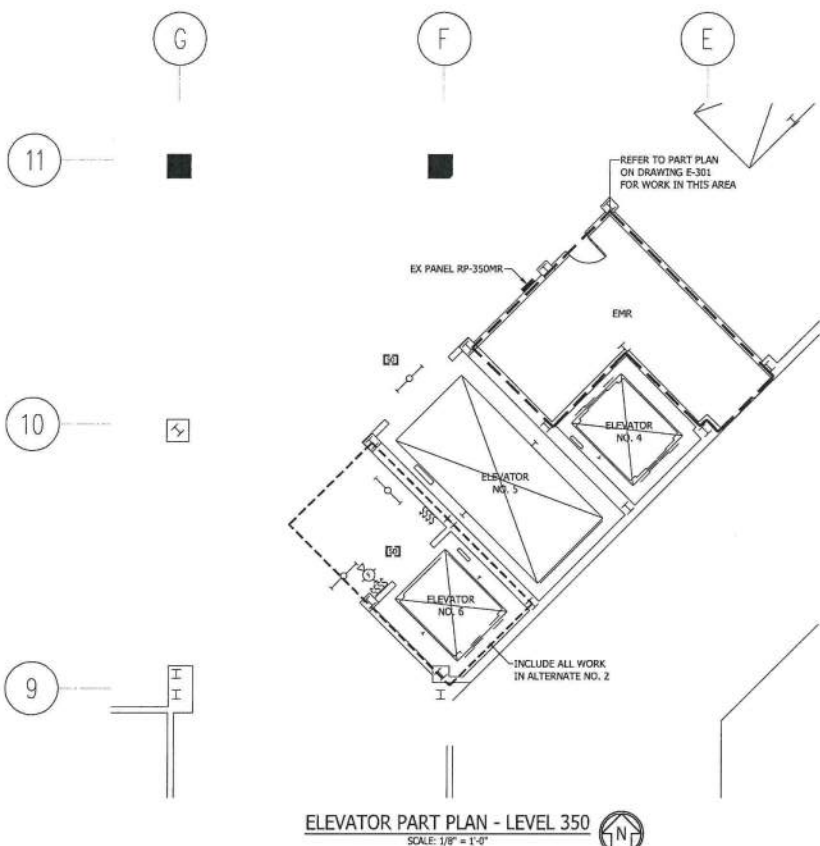
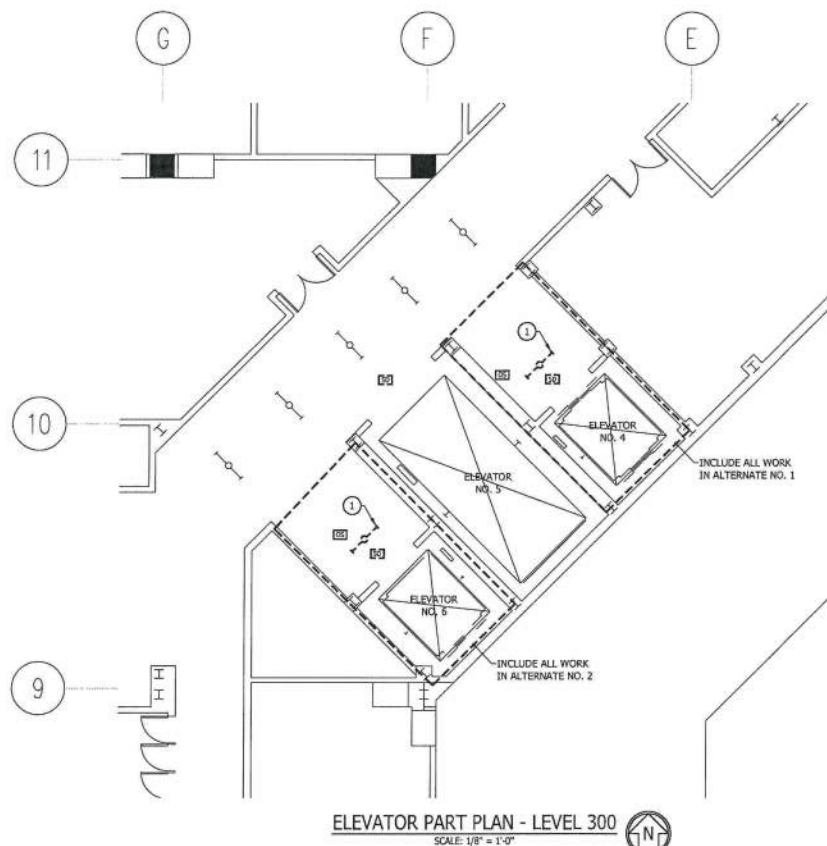
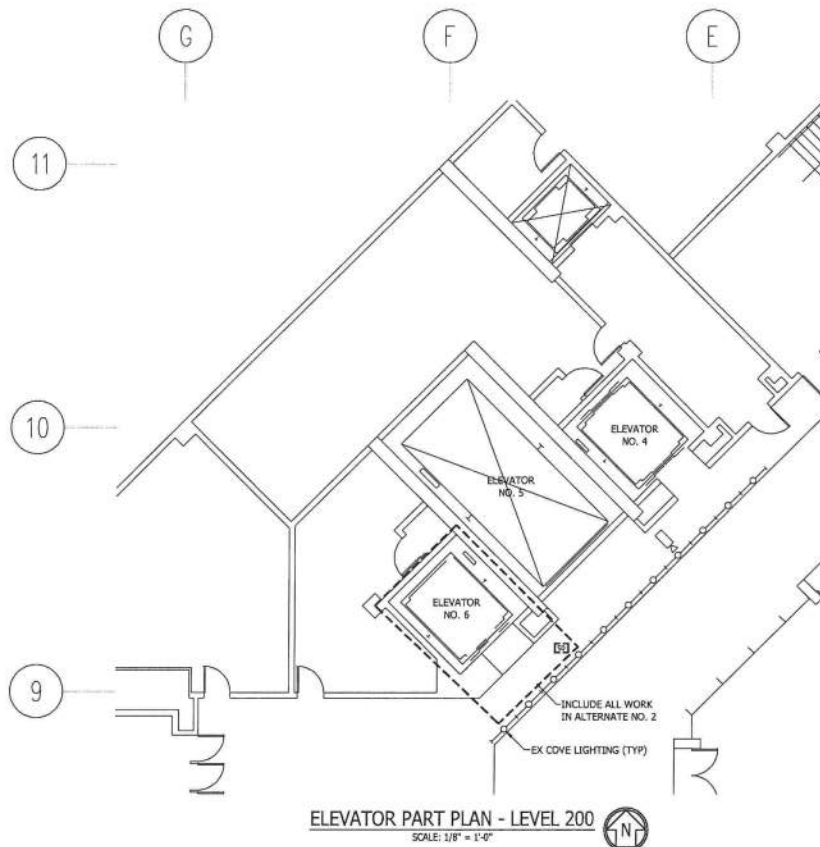
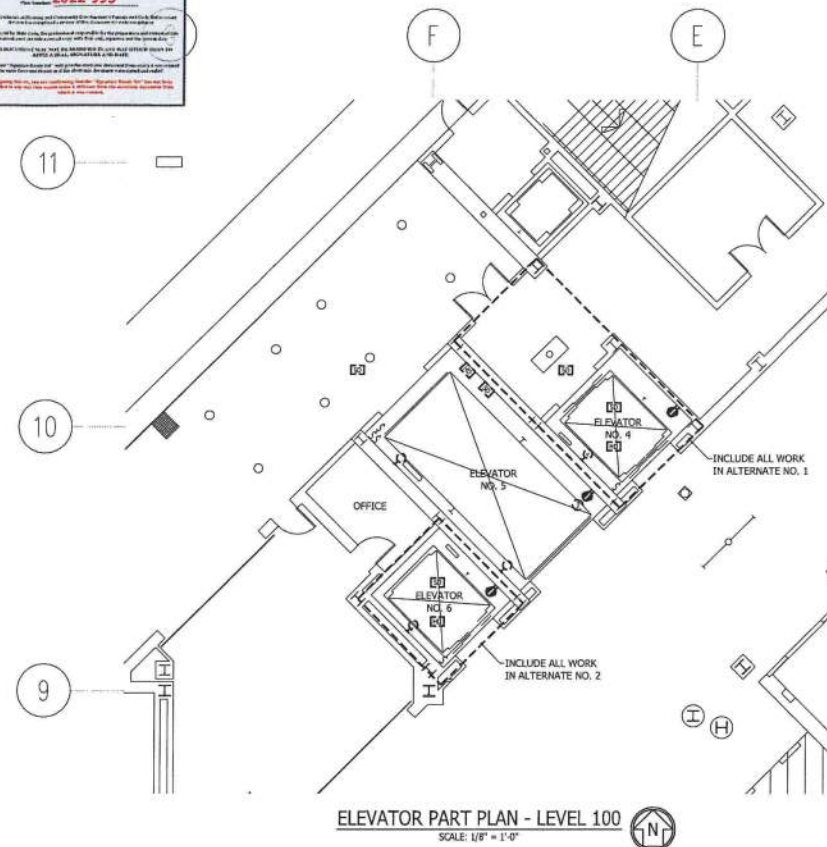
ELEVATOR PART PLANS
MECHANICAL
NEW WORK

03/24/2022

SHEET
M-201

08 OF 13





NO.	DATE	DESCRIPTION

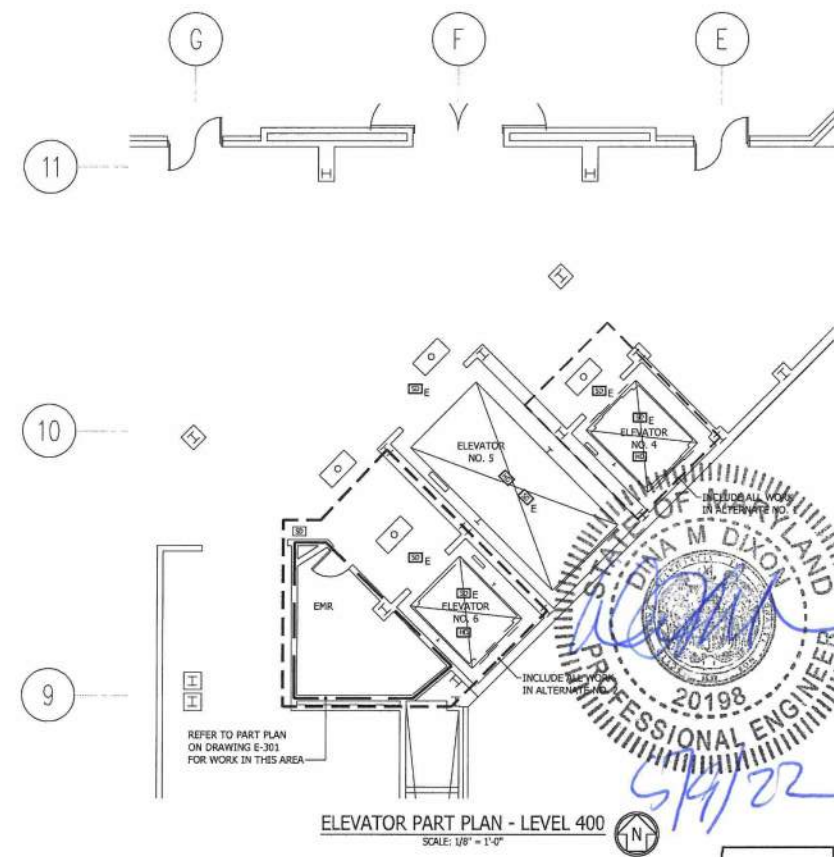
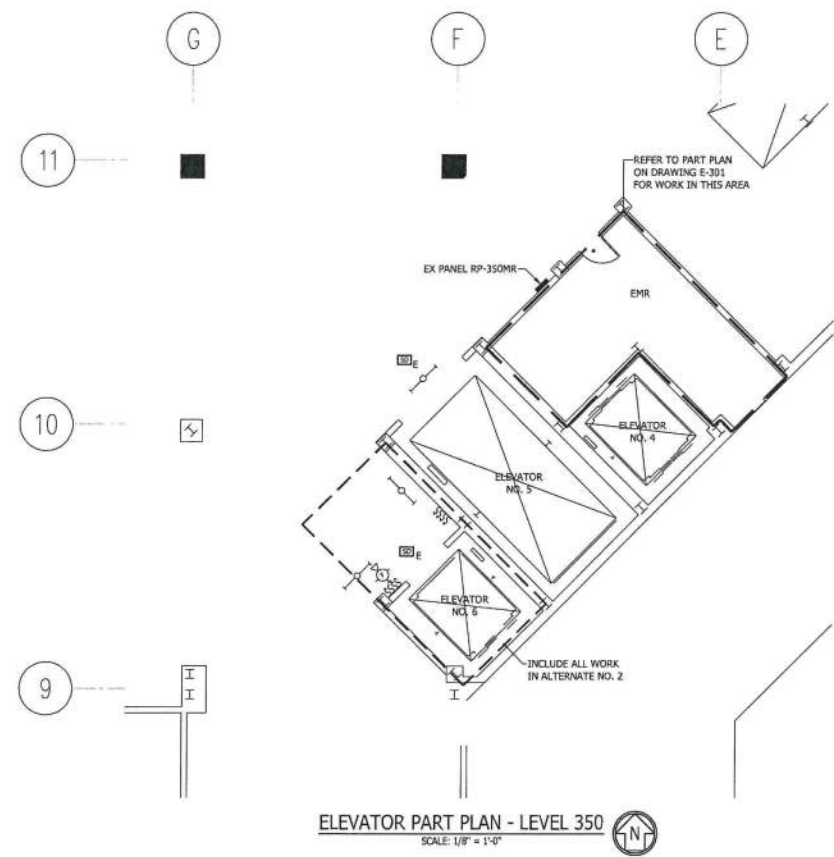
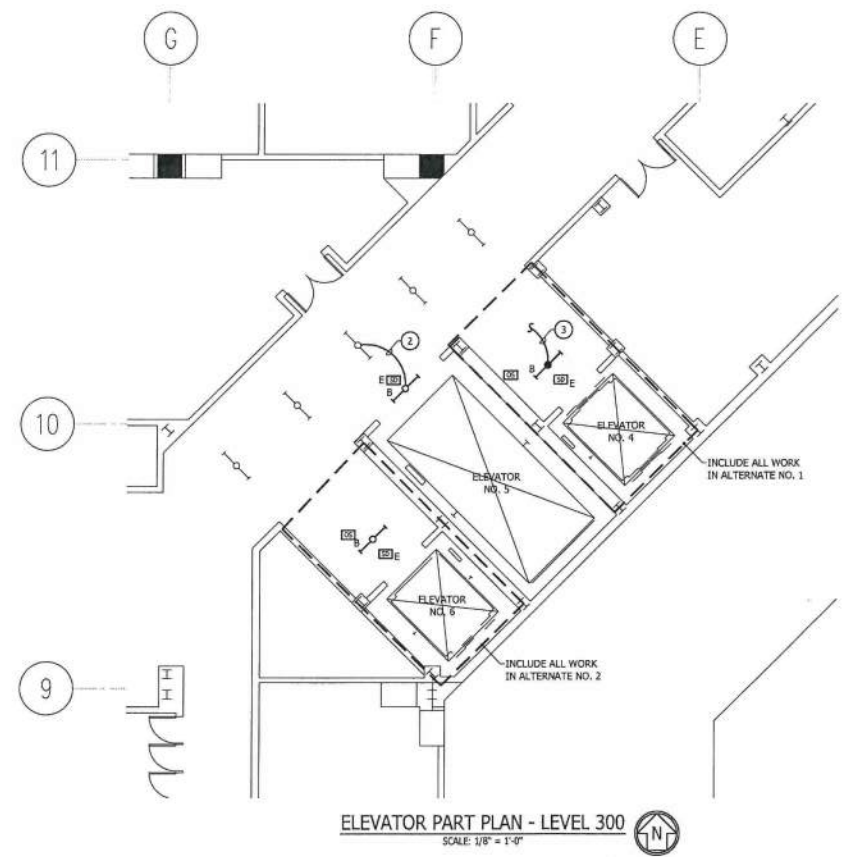
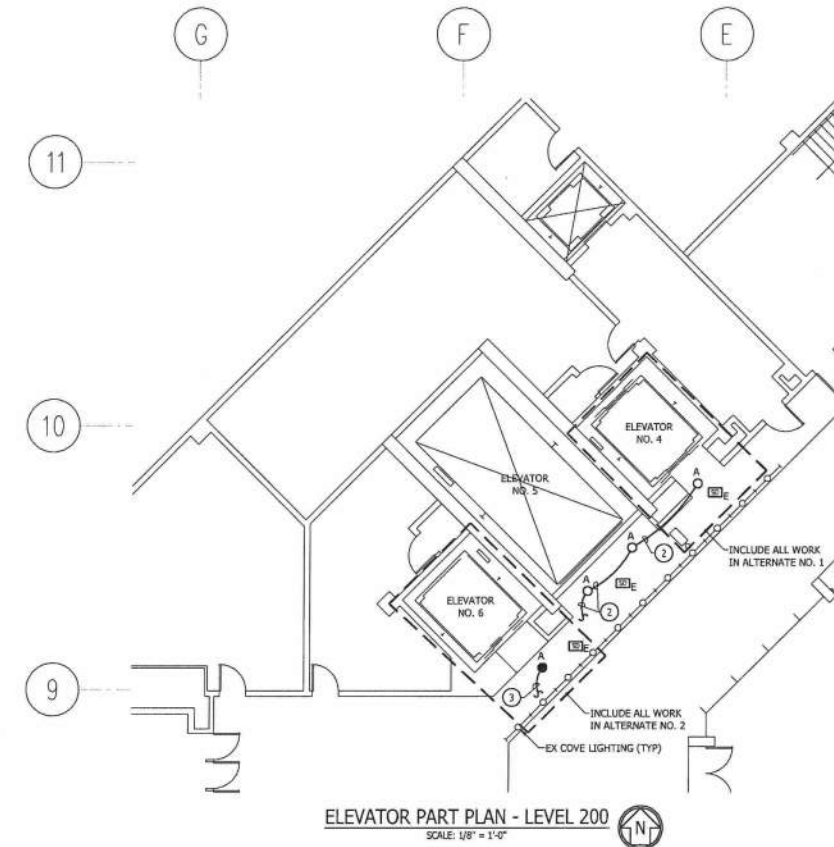
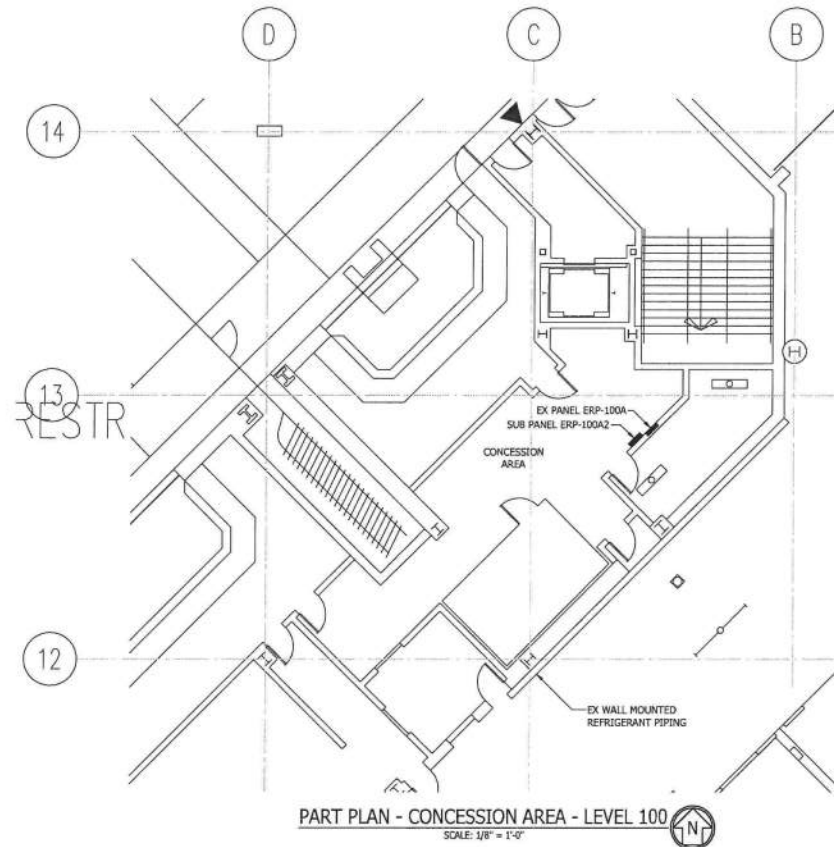
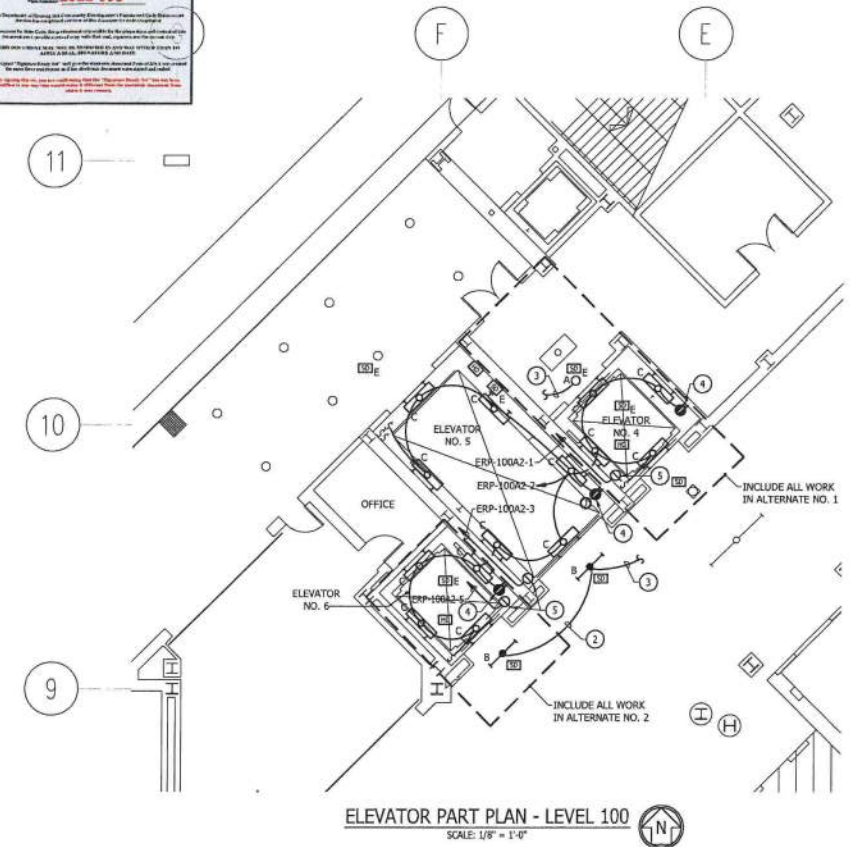
BALTIMORE CONVENTION CENTER
1 W PRATT STREET
BALTIMORE, MARYLAND 21201
ELEVATOR REPLACEMENT
CONTRACT NO. GS 21802

ELEVATOR PART PLANS
ELECTRICAL
NEW WORK

03/24/2022

SHEET E-201

11 OF 13

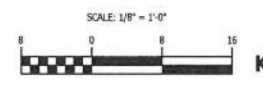


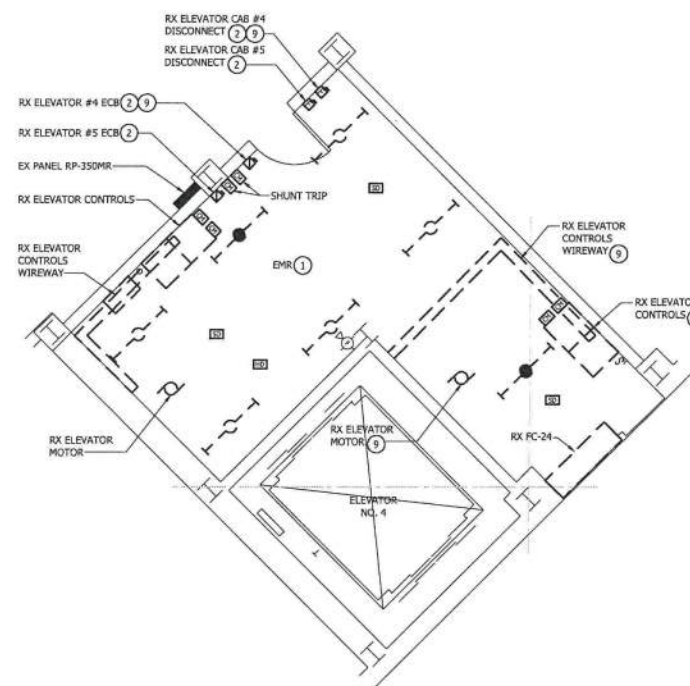
GENERAL NOTES:

1. ALL LIGHTING FIXTURES AT ELEVATOR LANDING THRESHOLDS SHALL BE ON AN UNSWITCHED CIRCUIT. LIGHTING FIXTURES CURRENTLY CONTROLLED BY AN OCCUPANCY SENSOR IN THE AREA SHALL BE REMOVED FROM THIS CONTROL.

DRAWING NOTES:

1. MAKE ALL CONNECTIONS TO EXISTING MAINTAINED CIRCUIT. EXTEND CONDUIT AND WIRING AS REQUIRED TO MATCH EXISTING.
2. PROVIDE 2 #12 AND 1 #12 GROUND IN 3/4" CONDUIT AS REQUIRED AND MAKE ALL CONNECTIONS TO EXISTING LIGHTING CIRCUIT IN THE AREA.
3. PROVIDE 2 #12 AND 1 #12 GROUND IN 3/4" CONDUIT AS REQUIRED AND MAKE ALL CONNECTIONS TO EXISTING EMERGENCY LIGHTING CIRCUIT IN THE AREA.
4. RECEPTACLES SHALL BE CONNECTED TO THE UN-SWITCHED PORTION OF THE CIRCUITING AS WELL AS DOWN STREAM OF THE LIGHTING CIRCUIT.
5. COORDINATE MOUNTING AND LOCATION WITH SLUMP PUMP. PROVIDE WITH WEATHERPROOF IN-USE COVER.



[illegible]

EX PANEL LCLP-400S1

EX PANEL ERP-400A

EX PANEL RP-400BF

EX PANEL RP-400BE

EX PANEL RP-400ED

EX PANEL RP-400BC

EX PANEL RP-400BB

EX PANEL RP-400BA

EX PANEL MPN400

EX HONEYWELL FIRE ALARM
CONTROL PANEL MODEL 5491
AND EXTENDER PANELS

STATE OF MARYLAND
DINA M. DIXON
20198
PROFESSIONAL ENGINEER

12 OF 13

EX DISTRIBUTION PANEL DP-400B - WESTINGHOUSE PRL4B PANELBOARD									
MOUNTING: FREESTANDING			A.I.C. RATING:			LOCATION: MAIN ELECTRICAL RM			
VOLTAGE: 480V, 3PH, 3W			AMPERE MAIN BUS 600A			AMPERE MAIN 600A MCB			
CKT NO	SERVES		CIRCUIT BREAKER	WIRING		REMARKS	CONN		
			P FRAME TRIP SETS NO	SIZE GND C			KVA		
1	EX WATER HEATER NO. 1	3	100 30	EXISTING CIRCUIT					
2	EX ELEVATOR NO. 4	3	100 100	EXISTING CIRCUIT					
3	EX ESCALATOR NO. 10	3	100 45	EXISTING CIRCUIT					
4	EX ESCALATOR NO. 11	3	100 45	EXISTING CIRCUIT					
5	EX ESCALATOR NO. 12	3	100 45	EXISTING CIRCUIT					
6	EX ESCALATOR NO. 13	3	100 45	EXISTING CIRCUIT					
7	EX ESCALATOR NO. 20	3	100 45	EXISTING CIRCUIT					
8	EX ESCALATOR NO. 21	3	100 45	EXISTING CIRCUIT					
9	EX ESCALATOR NO. 22	3	100 45	EXISTING CIRCUIT					
10	EX ESCALATOR NO. 23	3	100 45	EXISTING CIRCUIT					
11	EX ESCALATOR NO. 18	3	100 45	EXISTING CIRCUIT					
12	EX ESCALATOR NO. 19	3	100 45	EXISTING CIRCUIT					
13	EX ELEVATOR NO. 5	3	225 175	EXISTING CIRCUIT					
14	SPACE	3	100						
15	SPACE	3	100						
16	SPACE	3	225						
TOTAL CONNECTED LOAD							0 KVA		

EX DISTRIBUTION PANEL DP-400B - WESTINGHOUSE PRL4B PANELBOARD (MOD)									
MOUNTING: FREESTANDING			A.I.C. RATING:			LOCATION: MAIN ELECTRICAL RM			
VOLTAGE: 480V, 3PH, 3W			AMPERE MAIN BUS 600A			AMPERE MAIN 600A MCB			
CKT NO	SERVES		CIRCUIT BREAKER	WIRING		REMARKS	CONN		
			P FRAME TRIP SETS NO	SIZE GND C			KVA		
1	EX WATER HEATER NO. 1	3	100 30	EXISTING CIRCUIT					
2	SPARE	3	100 100						
3	EX ESCALATOR NO. 10	3	100 45	EXISTING CIRCUIT					
4	EX ESCALATOR NO. 11	3	100 45	EXISTING CIRCUIT					
5	EX ESCALATOR NO. 12	3	100 45	EXISTING CIRCUIT					
6	EX ESCALATOR NO. 13	3	100 45	EXISTING CIRCUIT					
7	EX ESCALATOR NO. 20	3	100 45	EXISTING CIRCUIT					
8	EX ESCALATOR NO. 21	3	100 45	EXISTING CIRCUIT					
9	EX ESCALATOR NO. 22	3	100 45	EXISTING CIRCUIT					
10	EX ESCALATOR NO. 23	3	100 45	EXISTING CIRCUIT					
11	EX ESCALATOR NO. 18	3	100 45	EXISTING CIRCUIT					
12	EX ESCALATOR NO. 19	3	100 45	EXISTING CIRCUIT					
13	EX ELEVATOR NO. 5	3	225 175	EXISTING CIRCUIT					
14	ELEVATOR NO. 4	3	225 150 1 3	1 8 1-1/2	ALTERNATE NO. 1		60.8		
15	SPACE	3	100						
16	SPACE	3	225						
TOTAL CONNECTED LOAD							112.1 KVA		

EX PANEL ERP-100A CUTLER HAMMER POW-R-LINE - PRL1									
MOUNTING: RECESSED			LOCATION: HALL E CONCESSION STAND 105						
VOLTAGE: 208/120V, 3PH, 4W			100% RATED NEUTRAL BUS			22,000 A.I.C.			
MAIN BUS: 200A			200A MCB						
CONN KVA	CKT	DESCRIPTION	BREAKER P AMPS NO	CIRCUIT WIRING SIZE GND C	CONN KVA	CKT	DESCRIPTION	BREAKER P AMPS NO	CIRCUIT WIRING SIZE GND C
1	EX REFRIG SYS 3SF	3 30	EXISTING CIRCUIT		2	EX WALK-IN FREEZER	3 25	EXISTING CIRCUIT	
3	-	-	-	-	4	-	-	-	-
5	-	-	-	-	6	-	-	-	-
7	EX REFRIG SYS 3SF	3 20	EXISTING CIRCUIT		8	EX REFRIG SYS 3SF	2 20	EXISTING CIRCUIT	
9	-	-	-	-	10	-	-	-	-
11	-	-	-	-	12	EX REFRIG SYS 3SF	3 20	EXISTING CIRCUIT	
13	EX REFRIG SYS 3SF	3 20	EXISTING CIRCUIT		14	-	-	-	-
15	-	-	-	-	16	-	-	-	-
17	-	-	-	-	18	EX SELF SERVE REFRIG	3 20	EXISTING CIRCUIT	
19	EX SELF SERVE REFRIG	1 20	EXISTING CIRCUIT		20	-	-	-	-
21	EX ICE CREAM CABINET	1 15	EXISTING CIRCUIT		22	-	-	-	-
23	EX REACH-IN REFRIG	1 20	EXISTING CIRCUIT		24	EXISTING CIRCUIT	1 20	EXISTING CIRCUIT	
25	EX REACH-IN REFRIG	1 20	EXISTING CIRCUIT		26	EX REACH-IN REFRIG	1 20	EXISTING CIRCUIT	
27	EX WALK-IN REFRIG	1 20	EXISTING CIRCUIT		28	EX REACH-IN REFRIG	1 20	EXISTING CIRCUIT	
29	EX SELF SERVE REFRIG	1 20	EXISTING CIRCUIT		30	EX REFRIG SYS 3SF	1 20	EXISTING CIRCUIT	
31	EX VENT CONT CAB	1 15	EXISTING CIRCUIT		32	EX VENT CONT CAB	1 20	EXISTING CIRCUIT	
33	EX FIRE EXTING SYSTEM	1 20	EXISTING CIRCUIT		34	EX FIRE EXTING SYSTEM	1 20	EXISTING CIRCUIT	
35	EX WALK-IN REFRIG	1 20	EXISTING CIRCUIT		36	EXISTING CIRCUIT	1 20	EXISTING CIRCUIT	
37	EX ELEV 7 CONTROLS	1 20	EXISTING CIRCUIT		38	EXISTING CIRCUIT	1 20	EXISTING CIRCUIT	
39	EX ELEV 3 CONTROLS	1 20	EXISTING CIRCUIT		40	SPACE	1		
41	SPACE	1			42	SPACE	1		
TOTAL CONNECTED LOAD			0 KVA	KVA PER PHASE: A 0 B 0 C 0					

EX PANEL ERP-100A (MOD) CUTLER HAMMER POW-R-LINE - PRL1									
MOUNTING: RECESSED			LOCATION: HALL E CONCESSION STAND 105						
VOLTAGE: 208/120V, 3PH, 4W			100% RATED NEUTRAL BUS			22,000 A.I.C.			
MAIN BUS: 200A			200A MCB						
CONN KVA	CKT	DESCRIPTION	BREAKER P AMPS NO	CIRCUIT WIRING SIZE GND C	CONN KVA	CKT	DESCRIPTION	BREAKER P AMPS NO	CIRCUIT WIRING SIZE GND C
1	EX REFRIG SYS 3SF	3 30	EXISTING CIRCUIT		2	EX WALK-IN FREEZER	3 25	EXISTING CIRCUIT	
3	-	-	-	-	4	-	-	-	-
5	-	-	-	-	6	-	-	-	-
7	EX REFRIG SYS 3SF	3 20	EXISTING CIRCUIT		8	EX REFRIG SYS 3SF	2 20	EXISTING CIRCUIT	
9	-	-	-	-	10	-	-	-	-
11	-	-	-	-	12	EX REFRIG SYS 3SF	3 20	EXISTING CIRCUIT	
13	EX REFRIG SYS 3SF	3 20	EXISTING CIRCUIT		14	-	-	-	-
15	-	-	-	-	16	-	-	-	-
17	-	-	-	-	18	EX SELF SERVE REFRIG	3 20	EXISTING CIRCUIT	
19	EX SELF SERVE REFRIG	1 20	EXISTING CIRCUIT		20	-	-	-	-
21	EX ICE CREAM CABINET	1 15	EXISTING CIRCUIT		22	-	-	-	-
23	EX REACH-IN REFRIG	1 20	EXISTING CIRCUIT		24	EXISTING CIRCUIT	1 20	EXISTING CIRCUIT	
25	EX REACH-IN REFRIG	1 20	EXISTING CIRCUIT		26	EX REACH-IN REFRIG	1 20	EXISTING CIRCUIT	
27	EX WALK-IN REFRIG	1 20	EXISTING CIRCUIT		28	EX REACH-IN REFRIG	1 20	EXISTING CIRCUIT	
29	EX SELF SERVE REFRIG	1 20	EXISTING CIRCUIT		30	EX REFRIG SYS 3SF	1 20	EXISTING CIRCUIT	
31	EX VENT CONT CAB	1 15	EXISTING CIRCUIT		32	EX VENT CONT CAB	1 20	EXISTING CIRCUIT	
33	EX FIRE EXTING SYSTEM	1 20	EXISTING CIRCUIT		34	EX FIRE EXTING SYSTEM	1 20	EXISTING CIRCUIT	
35	EX WALK-IN REFRIG	1 20	EXISTING CIRCUIT		36	EXISTING CIRCUIT	1 20	EXISTING CIRCUIT	
37	EX ELEV 7 CONTROLS	1 20	EXISTING CIRCUIT		38	PANEL ERP-100A2	3 60 4 10 1	2.2	
39	EX ELEV 3 CONTROLS	1 20	EXISTING CIRCUIT		40	-	-	-	-
41	EXISTING CIRCUIT	1 20	EXISTING CIRCUIT		42	-	-	-	-
TOTAL CONNECTED LOAD			4 KVA	KVA PER PHASE: A 2.2 B 1.1 C 1.1					

PANEL ERP-100A2 MOUNTING: SURFACE									
VOLTAGE: 208/120V, 3PH, 4W			*ALTERNATE NO. 1 **ALTERNATE NO. 2			LOCATION: HALL E CONCESSION STAND 105			
MAIN BUS: 100A			60A M.C.B.			100% RATED NEUTRAL BUS 22,000 A.I.C.			
CONN KVA	CKT	DESCRIPTION	BREAKER P AMPS NO	CIRCUIT WIRING SIZE GND C	CONN KVA	CKT	DESCRIPTION	BREAKER P AMPS NO	CIRCUIT WIRING SIZE GND C
1.1	1	SUMP PUMP - ELEV NO. 4	1 20*	2 12 12 3/4	2	2	ELEV 4.5.6 - PIT LIGHTING	1 20	2 12 12 3/4 1.1
1.1	3	SUMP PUMP - ELEV NO. 5	1 20	2 12 12 3/4	4	4	SPACE	1 20	
1.1	5	SUMP PUMP - ELEV NO. 6	1 20**	2 12 12 3/4	6	6	SPACE	1 20	
	7	SPACE	1		8	8	SPACE	1	
	9	SPACE	1		10	10	SPACE	1	
	11	SPACE	1		12	12	SPACE	1	
TOTAL CONNECTED LOAD			4 KVA	KVA PER PHASE: A 2.2 B 1.1 C 1.1					

EX DISTRIBUTION PANEL EDP150 - WESTINGHOUSE PRL4B									
MOUNTING: FREESTANDING			A.I.C. RATING:			LOCATION: UTILITY ROOM M151			
VOLTAGE: 480V, 3PH, 3W			AMPERE MAIN BUS 250A			AMPERE MAIN 250A MCB			
CKT NO	SERVES		CIRCUIT BREAKER	WIRING		REMARKS	CONN		
			P FRAME TRIP SETS NO	SIZE GND C			KVA		
1	EX MAIN BREAKER	3	250 250	EXISTING CIRCUIT					
2	EX ELEVATOR NO. 6	3	225 150	EXISTING CIRCUIT					
3	SPARE	3	100 100						
4	SPARE	3	100 50						
5	SPACE	3							
6	SPACE	3							
TOTAL CONNECTED LOAD							0 KVA		

EX PANEL ERP-400A (MOD)										CUTLER HAMMER POW-R-LINE - PRL1										MOUNTING: SURFACE																			
VOLTAGE: 208/120V, 3PH, 4W																				LOCATION: ELECTRICAL ROOM 404B																			
MAIN BUS: 225A										125A MCB										100% RATED NEUTRAL BUS										22,000									
CONN KVA		CKT	DESCRIPTION	BREAKER P	AMPS	NO	CIRCUIT WIRING			SIZE		GND	C	CKT	DESCRIPTION	BREAKER P	AMPS	NO	CIRCUIT WIRING			SIZE		GND	C														
1			EX FAN COIL WALKIN BOX	1	20		EXISTING CIRCUIT							2	EX REFR FOR WALKIN BOX 300 LVL	1	20		EXISTING CIRCUIT																				
3			EX FAN COIL WALKIN BOX	1	20		EXISTING CIRCUIT							4	EX SMALL HOOD W/COIL KITCH	1	20		EXISTING CIRCUIT																				
5			EX REC VIP (440) REFRIG	1	20		EXISTING CIRCUIT							6	EX REC FOR REF VIP STE	1	20		EXISTING CIRCUIT																				
7			EX FAN COIL WALKIN BOX	1	20		EXISTING CIRCUIT							8	EX 110V FEED ELEV QNT RM 442	1	20		EXISTING CIRCUIT																				
9			EX LAMP LOAD WASH CONT KITCH	1	20		EXISTING CIRCUIT							10	EX FIRE ALARM PNL 400 SOUTH	1	20		EXISTING CIRCUIT																				
11			EX LAMP LOAD WASH CONT KITCH	1	20		EXISTING CIRCUIT							12	EX ACCT CTR FOR 300 LVL SOUTH	1	20		EXISTING CIRCUIT																				
13			SPACE	-	-	-	-	-	-	-	-	-	-	14	EX ATC DECA	1	20		EXISTING CIRCUIT																				
1.3			DSB-1	2	20	3	12	12	3/4					16	EX ATC DECA	1	20		EXISTING CIRCUIT																				
1.3			ALTERNATE NO. 2	-	-	-	-	-	-	-	-	-	-	18	EX ATC DECA	1	20		EXISTING CIRCUIT																				
19			SPACE	-	-	-	-	-	-	-	-	-	-	20	EX SUPERIOR DINING CTR	1	20		EXISTING CIRCUIT																				
21			SPACE	-	-	-	-	-	-	-	-	-	-	22	EX CTR POWER ELEV RM 300	1	20		EXISTING CIRCUIT																				
23			CNT PWR 42 ELEV 300	1	20		EXISTING CIRCUIT							24	EX CTR PWR ELEV A RM 300	1	20		EXISTING CIRCUIT																				
26			EX SPACE	1	20		EXISTING CIRCUIT							26	EX CONTROL POWER FOR CIRCUIT	2	40		EXISTING CIRCUIT																				
27			SPACE	-	-	-	-	-	-	-	-	-	-	28	BREAKER GEAR RM 438	-	-	-	-	-	-	-	-	-	-														
29			EX REF WEST WALL KITCH	1	35		EXISTING CIRCUIT							30	EX UNIT LIMIT HMR 402C	1	20		EXISTING CIRCUIT																				
31			EX REF WEST WALL KITCH	1	35		EXISTING CIRCUIT							32	EX FIRE ALARM PNL RM 402C	1	20		EXISTING CIRCUIT																				
33			EX CIRCUIT	1	35		EXISTING CIRCUIT							34	SPACE	-	-	-	-	-	-	-	-	-	-														
35			SPACE	-	-	-	-	-	-	-	-	-	-	36	SPACE	-	-	-	-	-	-	-	-	-	-														
37			EX 350 CONTROL PANEL	3	30		EXISTING CIRCUIT							38	EX DOOR BY EAST VIP	1	35		EXISTING CIRCUIT																				
39			SPACE	-	-	-	-	-	-	-	-	-	-	40	SPACE	-	-	-	-	-	-	-	-	-	-														
41			SPACE	-	-	-	-	-	-	-	-	-	-	42	SPACE	-	-	-	-	-	-	-	-	-	-														
TOTAL CONNECTED LOAD				3 KVA				KVA PER PHASE:				A				0				B				1.3				C				1.3							