

---

CITY OF BALTIMORE

BRANDON M. SCOTT,  
Mayor



DEPARTMENT OF RECREATION AND  
PARKS

CAPITAL DEVELOPMENT AND PLANNING  
2600 Madison Avenue  
Baltimore, Maryland 21217

---

**MARY E. RODMAN RECREATION CENTER**

**RENOVATION CONTRACT NO. RP20814**

**ADDENDUM NO. 3**

**November 02, 2021**

**For:**

1. SPECIFICATIONS
2. CONSTRUCTION DRAWINGS
3. BIDS DUE DATE EXTENSION TO NOVEMBER 17, 2021

**FOR THE MAYOR AND CITY COUNCIL OF BALTIMORE**

TO BIDDERS: THIS ADDENDUM IS HEREBY MADE A PART OF THE CONTRACT DOCUMENTS ON WHICH THE CONTRACT WILL BE BASED, AND IS ISSUED TO MODIFY, EXPLAIN AND/OR CORRECT THE ORIGINAL DRAWINGS AND SPECIFICATIONS. **PLEASE ATTACH THIS ADDENDUM TO YOUR CONTRACT DOCUMENTS AND ACKNOWLEDGE IT ON THE BID OR PROPOSAL PAGE WHERE INDICATED.**

**\*PLEASE CHANGE BIDS DUE DATE FROM 11/10/2021 TO 11/17/2021\***

**APPROVED:**

Adam Boorman, RLA  
CHIEF OF CAPITAL DEVELOPMENT  
DEPARTMENT OF RECREATION AND PARKS

Reginald Moore  
DIRECTOR OF RECREATION AND PARKS

**A. CHANGES TO THE SPECIFICATIONS:**

<b>ITEM NO.</b>	<b>SECTION NO.</b>	<b>DESCRIPTION OF CHANGES</b>
<b>1.1</b>	<b>TABLE OF CONTENTS</b>	<b>DELETE</b> pages XIIIIR, XIVR and XVIRR and <b>Replace</b> with page XIIIIRR, XIVRR and XVIRRR
<b>1.2</b>	<b>NOTICE OF LETTING</b>	<b>DELETE</b> page 1 and <b>Replace</b> with page 1R
<b>1.3</b>	<b>09 31 00 CERAMIC TILE</b>	<b>DELETE</b> entire section and <b>Replace</b> with pages 252R-261R
<b>1.4</b>	<b>BID OR PROPOSAL</b>	<b>DELETE</b> page 569RR <b>Replace</b> with page 569RRR
<b>1.5</b>	<b>MBE AND WBE PARTICIPATION COMMITMENT FORMS</b>	<b>DELETE</b> page 580RR <b>Replace</b> with page 580RRR
<b>1.6</b>	<b>MBE/WBE PARTICIPATION WAIVER REQUEST FORM</b>	<b>DELETE</b> page 588RR <b>Replace</b> with page 588RRR
<b>1.7</b>	<b>THE BALTIMORE APPRENTICE TRAINEE PROGRAM (BATP) BID FORM</b>	<b>DELETE</b> page 590RR <b>Replace</b> with page 590RRR
<b>1.8</b>	<b>EMPLOY BALTIMORE CERTIFICATION STATEMENT</b>	<b>DELETE</b> page 603RR <b>Replace</b> with page 603RRR
<b>1.9</b>	<b>CONSTRUCTION DRAWINGS</b>	<b>Replace</b> pages <b>CS-1, AD-100, A-101 A-107, A-200, A-201, A-300, A301, A-400, A-600</b> with the new pages attached.

**TABLE OF CONTENTS**

NOTICE TO BIDDERS .....	I
EXECUTIVE ORDER BALTIMORE CITY EMPLOY BALTIMORE.....	II-III
EXECUTIVE ORDER BALTIMORE CITY YOUTH WORKS.....	IV
RESOLUTION OF THE BOARD OF ESTIMATES OF THE CITY OF BALTIMORE.....	V-VI
RESOLUTION OF THE BOARD OF ESTIMATES APPRENTICESHIP TRAINING PROGRAMS.....	VII
RESOLUTION OF THE BOARD OF ESTIMATES THE REGULATION OF MEETINGS AND PROTESTS... ..	VIII-IX
RESOLUTION OF THE BOARD OF ESTIMATES OF BALTIMORE CITY FOR A HUBZONE NEIGHBORHOOD PREFERENCE IN SOLICITATIONS .....	X-XI
PRE-BID MEETING.....	XII
TABLE OF CONTENTS. ....	XIII-XVIRRR
I. NOTICE OF LETTING .....	1R-2
II.SPECIAL PROVISIONS.....	3
A.INSTRUCTIONS TO BIDDERS.....	4RR-6
B. SPECIAL CONDITIONS. ....	7-27
C. CONSTRUCTION DETAILS AND MATERIALS.....	28
DIVISION 01 GENERAL REQUIREMENTS	
01 10 00 SUMMARY.....	28-30
01 22 00 UNIT PRICES.....	31-32
01 23 00 ALTERNATES.....	33-34RR
01 25 00 SUBSTITUTION PROCECURES.....	35-37
01 26 00 CONTRACT MODIFICATION PROCEDURES.....	38-39
01 29 00 PAYMENT PROCEDURES.....	40-43
01 31 00 PROJECT MANAGEMENT AND COORDINATION.....	44-49
01 32 00 CONSTRUCTION PROGRESS DOCUMENTATION.....	50-52
01 33 00 SUBMITTAL PROCEDURES.....	53-61
01 40 00 QUALITY REQUIREMENTS.....	62-71
01 50 00 TEMPORARY FACILITIES AND CONTROLS.....	72-77
01 60 00 PRODUCT REQUIREMENTS.....	78-81
01 73 00 EXECUTION.....	82-88
01 74 19 CONSTRUCTION WASTE MANAGEMENT AND DISPOSAL.....	89-95
01 77 00 CLOSEOUT PROCEDURES.....	96-101
01 78 23 OPERATION AND MAINTENANCE DATA.....	102-108
01 78 39 PROJECT RECORD DOCUMENTS.....	109-112

## DIVISION 02 EXISTING CONDITIONS

02 41 19	SELECTIVE DEMOLITION.....	113-118
----------	---------------------------	---------

## DIVISION 03 – CONCRETE

03 30 00	CAST IN PLACE CONCRETE.....	119-121
----------	-----------------------------	---------

## DIVISION 04 MASONRY

04 20 00	UNIT MASONRY.....	122-132
----------	-------------------	---------

## DIVISION 05 METAL

05 12 00	STRUCTURAL STEEL FRAMING.....	133-140
05 40 00	COLD-FORMED METAL FRAMING.....	141-147
	(REMAINING SPECS ON STRUCTURAL DRAWINGS)	

## DIVISION 06 WOOD, PLASTICS, AND COMPONENTS

06 10 00	ROUGH CARPENTRY.....	148-149
06 16 00	SHEATHING.....	150-151
06 40 23	INTERIOR ARCHITECTURAL WOODWORK.....	152-159

## DIVISION 07 THERMAL AND MOISTURE PROTECTION

07 21 00	THERMAL INSULATION.....	160-163
07 27 26	FLUID-APPLIED MEMBRANE AIR BARRIERS.....	164-168
07 54 23	THERMOPLASTIC POLYOLEFIN (TPO) ROOFING.....	169-173
07 62 00	SHEET METAL FLASHING AND TRIM.....	174-179
07 92 00	JOINT SEALANTS.....	180-188

## DIVISION 08 OPENINGS

08 11 13	HOLLOW METAL DOORS AND FRAMES.....	189-196
08 14 16	FLUSH WOOD DOORS.....	197-201
08 43 13	ALUMINUM-FRAMED STOREFRONT WINDOWS.....	202-207
08 60 00	SKYLIGHTS.....	208-211
08 66 20	NARROWLINE SECURITY SCREEN.....	211A-211B
08 71 00	DOOR HARDWARE.....	212-231
08 80 00	GLAZING.....	232-239
08 83 00	MIRRORS.....	240-242

## DIVISION 09 FINISHES

09 25 00	GYPSUM BOARD ASSEMBLIES.....	243-251
09 31 00	CERAMIC TILE.....	252R-261R
09 50 00	ACOUSTICAL WALL PANELS.....	262-265
09 51 23	ACOUSTICAL PANEL CEILINGS.....	266-272
09 65 13	RESILIENT WALL BASE AND ACCESSORIES.....	273-282
09 65 66	RESILIENT ATHLETIC FLOORING.....	283-288
09 67 23	RESINOUS FLOORING.....	289-295
09 68 12	CARPET.....	296-300
09 91 00	PAINTING.....	301-311

26 09 23	LIGHTING CONTROL DEVICES.....	539-547
26 27 26	WIRING DEVICES.....	548-554
26 28 16	ENCLOSED SWITCHES AND CIRCUIT BREAKERS.....	555-557
26 51 19	LED INTERIOR LIGHTING.....	558-560
26 51 20	LED EXTERIOR LIGHTING.....	561-566
DIVISION 31 – EARTHWORK .....		Not Used
DIVISION 32 – EXTERIOR IMPROVEMENTS.....		Not Used
DIVISION 33 – UTILITIES .....		Not Used
A. EXTRA WORK CERTIFICATION.....		567
B. SUBCONTRACTOR’S ACKNOWLEDGEMENT OF PROGRESS PAYMENTS.....		568
III.BID OR PROPOSAL.....		569RRR-572
A. BID/PROPOSAL AFFIDAVIT .....		573-577
B. EXHIBIT 1.....		578
C. MINORITY AND WOMEN’S BUSINESS OPPORTUNITY REQUIREMENTS AND FORMS .....		579-589
D. THE BALTIMORE APPRENTICE TRAINEE PROGRAM.....		590RRR-600
E. BALTIMORE CITY’S YOUTHWORKS.....		601
F. BALTIMORE CITY EMPLOY BALTIMORE .....		602-608
G. BID BOND.....		609-610
IV. AGREEMENT.....		611-612
V. BONDS		
A. PERFORMANCE BOND.....		613-615
B. PAYMENT BOND .....		616-618

**CITY OF BALTIMORE  
DEPARTMENT OF RECREATION AND PARKS**

**I. NOTICE OF LETTING**

Sealed Bids or Proposals for **Baltimore City Contract No. RP20814 – Mary E. Rodman Recreation Center Renovation** will be received at the Office of the Comptroller, Room 204, City Hall, Baltimore, Maryland until **November 17, 2021** at 11:00 A.M. Board of Estimates employees will be stationed at the Security Unit Counter just inside the Holliday Street entrance to City Hall from 10:45 A.M. to 11:00 A.M. every Wednesday to receive Bids. Positively no bids will be received after 11:00 A.M. The bids will be publicly opened by the Board of Estimates in Room 215, City Hall at Noon.

The proposed Contract Documents may be examined, without charge, at the Department of Recreation and Parks Capital and Development Division located at 2600 Madison Avenue, Baltimore, MD 21217 by appointment on Wednesdays and Fridays, 8:30am until 4:00pm by emailing [benitaj.randolph@baltimorecity.gov](mailto:benitaj.randolph@baltimorecity.gov) as of **July 16, 2021** and copies may be purchased for a non-refundable cost of **\$100.00.**

A certified check of the bidder or a bank cashier's check or a bank treasurer's check drawn on a solvent clearing house bank, made payable to the Director of Finance or a bid bond executed on the form as provided in the Bid or Proposal for an amount which is not less than that determined by multiplying the total bid submitted by two percent will be required with each bid over \$100,000.00. If the bid is less than or equal to \$100,000.00, no Bid Bond is required.

Bidders interested in utilizing the City's Self-Insurance Program for payment and performance security for contracts not exceeding \$100,000.00 may contact the Department of Finance, the Program Administrator, for eligibility requirements and premium costs.

All Bids will be irrevocable when filed with the Comptroller of Baltimore City. The Board of Estimates reserves the right to reject any and all Bids and/or to waive technical defects, if in its judgment, the interest of the Mayor and City Council of Baltimore may so require.

All contractors bidding on this Contract must first be prequalified by the City of Baltimore Office of Boards and Commissions, 4 South Frederick Street, 4th Floor, Baltimore, Maryland 21202 whose recommendations for an assigned dollar Work Capacity Rating and Work Classification(s) are effective after ratification and confirmation by the Board of Estimates. Contractors will not be permitted to bid on any single Contract having a dollar value in excess of the contractor's assigned Work Capacity Rating and will not be awarded any Contract if the Contract dollar value, when added to the contractor's uncompleted backlog at time of award, exceeds the contractor's assigned Work Capacity Rating.

Bidding Contractors must maintain a valid prequalification status through the time of award, when work commences and remain prequalified for the duration of the project. Subcontractors intending to perform City work in excess of Fifty Thousand Dollars (\$50,000.00) shall qualify in the same manner as prime contractors and such qualification must be established before they are permitted to commence work. **If a bid is submitted by a joint venture ("JV"), then in that event, the document that established the JV shall be submitted with the bid for verification purposes.** The Prequalification Category required for bidding on this project is **E-13001 – THREE STORY AND UNDER.**

The Cost Classification Range for this project will be from **\$500,000 to \$675,000.**

A "Pre-Bidding Information" session will be conducted via Microsoft Teams at **10:00am** on

## **SECTION 09 31 00 - CERAMIC TILE**

### **PART 1 - GENERAL**

#### **1.1 RELATED DOCUMENTS**

- A. Drawings and general provisions of the Contract, including General and Supplementary Conditions and Division 1 Specification Sections, apply to this Section.
- B. Harford County General Conditions

#### **1.2 SUMMARY**

- A. This Section includes the following:
  - 1. Porcelain Floor Tile.
  - 2. Porcelain Wall Tile
  - 3. Tile Backing Panels
  - 4. Crack Suppression Membrane
  - 5. Metal edge strips installed as part of tile installations.
- B. Related Sections include the following:
  - 1. Division 7 Section "Joint Sealants" for sealing of expansion, contraction, control, and isolation joints in tile surfaces.
  - 2. Division 9 Section "Gypsum Board Assemblies" for substrates for ceramic tile.

#### **1.3 DEFINITIONS**

- A. Module Size: Actual tile size (minor facial dimension as measured per ASTM C 499) plus joint width indicated.
- B. Facial Dimension: Nominal tile size as defined in ANSI A137.1.

#### **1.4 PERFORMANCE REQUIREMENTS**

- A. A. Dynamic Coefficient of Friction: For tile installed on walkway surfaces, provide products with the following values as determined by testing identical products per ANSI 137.1, section 9.6:
  - 1. Level Surfaces: DCOF 0.42 Wet.
- B. Static Coefficient of Friction: For tile installed on walkway surfaces, provide products with the following values as determined by testing identical products per ASTM C 1028:
  - 1. Level Surfaces: Minimum 0.6 Wet & Dry.

#### **1.5 SUBMITTALS**

- A. Product Data: For each type of product indicated.

- B. Shop Drawings: Show locations of each type of tile and tile pattern. Show widths, details, and locations of expansion, contraction, control, and isolation joints in tile substrates and finished tile surfaces.
- C. Samples for Initial Selection: For each type of tile and grout indicated. Include Samples of accessories involving color selection.
- D. Samples for Verification:
  - 1. Full-size units of each type and composition of tile and for each color and finish required.
  - 2. Assembled samples with grouted joints for each type and composition of tile and for each color and finish required, at least 12 inches square and mounted on rigid panel. Use grout of type and in color or colors approved for completed work.
  - 3. Full-size units of each type of trim and accessory for each color and finish required.
  - 4. Metal edge strips in 6-inch lengths.
- E. Master Grade Certificates: For each shipment, type, and composition of tile, signed by tile manufacturer and Installer.
- F. Product Certificates: For each type of product, signed by product manufacturer.
- G. Qualification Data: For Installer.
- H. Material Test Reports: For each tile-setting and -grouting product.

## 1.6 QUALITY ASSURANCE

- A. Source Limitations for Tile: Obtain all tile from one source or producer.
  - 1. Obtain tile from same production run and of consistent quality in appearance and physical properties for each contiguous area.
- B. Source Limitations for Setting and Grouting Materials: Obtain ingredients of a uniform quality for each mortar, adhesive, and grout component from a single manufacturer and each aggregate from one source or producer.
- C. Source Limitations for Other Products: Obtain each of the following products specified in this Section through one source from a single manufacturer for each product:
  - 1. Joint sealants.
  - 2. Metal edge strips.
- D. Preinstallation Conference: Conduct conference at Project site to comply with requirements in Division 1 Section "Project Management and Coordination."
  - 1. Meeting Agenda to include, but is not limited to:
    - a. Tile and installation material compatibility.
    - b. Grouting Procedure.
    - c. Surface Preparation.
    - d. Maintenance and cleaning products and methods.



## **1.7 DELIVERY, STORAGE, AND HANDLING**

- A. Deliver and store packaged materials in original containers with seals unbroken and labels intact until time of use. Comply with requirement in ANSI A137.1 for labeling sealed tile packages.
- B. Store tile and cementitious materials on elevated platforms, under cover, and in a dry location.
- C. Store aggregates where grading and other required characteristics can be maintained and contamination avoided.
- D. Store liquid latexes in unopened containers and protected from freezing.
- E. Handle tile that has temporary protective coating on exposed surfaces to prevent coated surfaces from contacting backs or edges of other units. If coating does contact bonding surfaces of tile, remove coating from bonding surfaces before setting tile.

## **1.8 PROJECT CONDITIONS**

- A. Environmental Limitations: Do not install tile until construction in spaces is complete and ambient temperature and humidity conditions are maintained at the levels indicated in referenced standards and manufacturer's written instructions.

## **1.9 EXTRA MATERIALS**

- A. Furnish extra materials described below that match products installed and that are packaged with protective covering for storage and identified with labels describing contents.
  - 1. Tile and Trim Units: Furnish quantity of full-size units equal to 3 percent of amount installed, for each type, composition, color, pattern, and size indicated.

# **PART 2 - PRODUCTS**

## **2.1 MANUFACTURERS**

- A. In other Part 2 articles where titles below introduce lists, the following requirements apply for product selection:
  - 1. Available Manufacturers: Subject to compliance with requirements, manufacturers offering products that may be incorporated into the Work include, but are not limited to, the manufacturers specified.

## **2.2 PRODUCTS, GENERAL**

- A. ANSI Ceramic Tile Standard: Provide tile that complies with ANSI A137.1, "Specifications for Ceramic Tile," for types, compositions, and other characteristics indicated.
  - 1. Provide tile complying with Standard grade requirements, unless otherwise indicated.

2. For facial dimensions of tile, comply with requirements relating to tile sizes specified in Part 1 "Definitions" Article.
- B. ANSI Standards for Tile Installation Materials: Provide materials complying with ANSI standards referenced in "Setting and Grouting Materials" Article.
- C. Colors, Textures, and Patterns: Where manufacturer's standard products are indicated for tile, grout, and other products requiring selection of colors, surface textures, patterns, and other appearance characteristics, provide specific products or materials complying with the following requirements:
  1. As selected by Architect from manufacturer's full range.
- D. Factory Blending: For tile exhibiting color variations within ranges selected during Sample submittals, blend tile in factory and package so tile units taken from one package show same range in colors as those taken from other packages and match approved Samples.
- E. Mounting: For factory-mounted tile, provide back- or edge-mounted tile assemblies as standard with manufacturer, unless otherwise indicated.
- F. Factory-Applied Temporary Protective Coating: Where indicated under tile type, protect exposed surfaces of tile against adherence of mortar and grout by precoating with continuous film of petroleum paraffin wax, applied hot. Do not coat unexposed tile surfaces.

## 2.3 TILE PRODUCTS

- A. Available Manufacturers:
  1. Crossville, Inc.
  2. Daltile; Div. of Dal-Tile International Inc.
  3. Garden State Tile (Basis of Design)
  4. Royal Mosa
  5. Conestoga Tile
- B. **CT-1** Wall Tile
  1. Manufacturer: Crossville
  2. Collection: Argent
  3. Color: Lemon Drop
  4. Size: 6"x24"
  5. Installation: Wall – see elevations.
  6. Location: 103 ADA Restroom

## 2.4 TILE BACKING PANELS

- A. Cementitious Backer Units: ANSI A118.9 or ASTM C 1325, Type A.
  1. Acceptable Manufacturers
    - a. USG Corporation
    - b. Custom Building Products
    - c. Georgia-Pacific
    - d. CertainTeed
  2. Thickness: 5/8 inch
- B. Fiber-Cement Backer Board: ASTM C 1288.

1. Acceptable Manufacturers
  - a. USG Corporation
  - b. Custom Building Products
  - c. Georgia-Pacific
  - d. CertainTeed
2. Thickness: 5/8 inch

## 2.5 SETTING AND GROUTING MATERIALS

- A. Available Manufacturers:
  1. Custom Building Products
  2. Bonsal, W. R., Company
  3. Bostik
  4. DAP, Inc.
  5. LATICRETE International Inc.
  6. MAPEI Corporation, Basis of Design.
- B. Dry-Set Portland Cement Mortar (Thin Set): ANSI A118.4, ANSI A118.1, See Evaluations for difference between normal and nonsagging mortar.
  1. For wall applications, provide nonsagging mortar that complies with Paragraph C-4.6.1 in addition to the other requirements in ANSI A118.1.
- C. Latex-Portland Cement Mortar (Thin Set): ANSI A118.4, consisting of the following:
  1. Prepackaged dry-mortar mix combined with styrene-butadiene-rubber liquid-latex additive.
    - a. For wall applications, provide nonsagging mortar that complies with Paragraph F-4.6.1 in addition to the other requirements in ANSI A118.4.
- D. Premium non-sag, medium-bed and thin-set mortar: Polymer-modified single-component mortar for large format tile ", complying with ANSI A118.4, A118.11 and ISO 13007 C2TES1P1; MAPEI "Ultraflex LFT", Basis of Design.
- E. Fast Setting Sanded Polymer-Modified Grout, Complying with ANSI A118.6, ANSI A118.7 and ISO 13007 CG2WAF, for joints between 1/16 inch and 1 inch (1,5 mm and 25 mm) wide; MAPEI "Ultracolor Plus"; Basis of Design, Full Range of Colors to be selected by Architect.
- F. Standard Unsanded Cement Grout: ANSI A118.6, color as selected by Architect from manufacturer's full range. Provide up to 5 different colors to be selected by Architect.
- G. Polymer-Modified Tile Grout: ANSI A118.7, color as selected by Architect from manufacturer's full range. Provide up to 5 different colors to be selected by Architect.
- H. Water-Cleanable Epoxy Grout: ANSI A118.3[, with a VOC content of 65 g/L or less when calculated according to 40 CFR 59, Subpart D, color as selected by Architect from manufacturer's full range. Provide up to 5 different colors to be selected by Architect.

## 2.6 SURFACE PREPARATION MATERIALS

- A. Reduced-preparation, self-leveling underlayment for smoothing and repairing interior floors before the installation of floor coverings from feather edge to up to 2" (5 cm).; MAPEI, "Ultraplan Easy"; Basis of Design.
  - 1. Requires MAPEI "Primer T".
- B. Cementitious Patching Compound; MAPEI, "Mapecem Quickpatch"; Basis of Design

## 2.7 CRACK ISOLATION AND WATERPROOFING MEMBRANE

- A. General: Manufacturer's standard product, selected from the following, that complies with ANSI A118.12 for standard performance and is recommended by the manufacturer for the application indicated.
- B. Corrugated Polyethylene: Corrugated polyethylene with dovetail-shaped corrugations and with anchoring webbing on the underside; 3/16-inch (4-mm) nominal thickness.
  - 1. Products: Subject to compliance with requirements, available products that may be incorporated into the Work include, but are not limited to, the following:
    - a. Schluter Systems L.P.; DITRA.
    - b. Premium Latex Based Waterproofing and Crack Isolation Membrane; fast setting, flexible, thin, load-bearing, waterproofing membrane system consisting of a premixed, quick-drying liquid latex, for installation under ceramic tile or complying with ANSI A118.10 and ANSI A118.12; and having IAMPO certification as a shower pan liner; MAPEI, "AquaDefense", Basis of Design.
    - c. Premixed, liquid-rubber, quick-drying crack-isolation membrane for installation under ceramic tile or stone in residential and commercial interior and exterior environments complying with ANSI A118.12; MAPEI, "Mapelastic CI"; Basis of Design.

## 2.8 ELASTOMERIC SEALANTS

- A. General: Provide manufacturer's standard chemically curing, elastomeric sealants of base polymer and characteristics indicated that comply with applicable requirements in Division 7 Section "Joint Sealants."
- B. Colors: Provide colors of exposed sealants to match colors of grout in tile adjoining sealed joints, unless otherwise indicated.
- C. One-Part, Mildew-Resistant Silicone Sealant: ASTM C 920; Type S; Grade NS; Class 25; Uses NT, G, A, and, as applicable to nonporous joint substrates indicated, O; formulated with fungicide, intended for sealing interior ceramic tile joints and other nonporous substrates that are subject to in-service exposures of high humidity and extreme temperatures.
  - 1. Available Products:
    - a. Dow Corning Corporation; Dow Corning 786.
    - b. GE Silicones; Sanitary 1700.
    - c. Pecora Corporation; Pecora 898 Sanitary Silicone Sealant.
    - d. Tremco, Inc.; Tremsil 600 White.

## **2.9 MISCELLANEOUS MATERIALS**

- A. Trowelable Underlayments and Patching Compounds: Latex-modified, portland cement-based formulation provided or approved by manufacturer of tile-setting materials for installations indicated.
- B. Metal Edge Strips: Angle or L-shape, height to match tile and setting-bed thickness, metallic or combination of metal and PVC or neoprene base, designed specifically for flooring applications, white zinc alloy exposed-edge material.
- C. Temporary Protective Coating: Product indicated below that is formulated to protect exposed surfaces of tile against adherence of mortar and grout; compatible with tile, mortar, and grout products; and easily removable after grouting is completed without damaging grout or tile.
  - 1. Petroleum paraffin wax, fully refined and odorless, containing at least 0.5 percent oil with a melting point of 120 to 140 deg F (49 to 60 deg C) per ASTM D 87.
  - 2. Grout release in form of manufacturer's standard proprietary liquid coating that is specially formulated and recommended for use as temporary protective coating for tile.
- D. Tile Cleaner: A neutral cleaner capable of removing soil and residue without harming tile and grout surfaces, specifically approved for materials and installations indicated by tile and grout manufacturers.
- E. Grout Sealer: Manufacturer's standard silicone product for sealing grout joints and that does not change color or appearance of grout.

## **2.10 MIXING MORTARS AND GROUT**

- A. Mix mortars and grouts to comply with referenced standards and mortar and grout manufacturers' written instructions.
- B. Add materials, water, and additives in accurate proportions.
- C. Obtain and use type of mixing equipment, mixer speeds, mixing containers, mixing time, and other procedures to produce mortars and grouts of uniform quality with optimum performance characteristics for installations indicated.

## **PART 3 - EXECUTION**

### **3.1 EXAMINATION**

- A. Examine substrates, areas, and conditions where tile will be installed, with Installer present, for compliance with requirements for installation tolerances and other conditions affecting performance of installed tile.
  - 1. Verify that substrates for setting tile are firm; dry; clean; free of oil, waxy films, and curing compounds; and within flatness tolerances required by referenced ANSI A108 Series of tile installation standards for installations indicated.

2. Verify that installation of grounds, anchors, recessed frames, electrical and mechanical units of work, and similar items located in or behind tile has been completed before installing tile.
  3. Verify that joints and cracks in tile substrates are coordinated with tile joint locations; if not coordinated, adjust joint locations in consultation with Architect.
- B. Proceed with installation only after unsatisfactory conditions have been corrected.

### 3.2 PREPARATION

- A. Remove coatings, including curing compounds and other substances that contain soap, wax, oil, or silicone, that are incompatible with tile-setting materials.
- B. Provide concrete substrates for tile floors installed with adhesives or thin-set mortar that comply with flatness tolerances specified in referenced ANSI A108 Series of tile installation standards.
  1. Fill cracks, holes, and depressions with trowelable leveling and patching compound according to tile-setting material manufacturer's written instructions. Use product specifically recommended by tile-setting material manufacturer.
  2. Remove protrusions, bumps, and ridges by sanding or grinding.
- C. Blending: For tile exhibiting color variations within ranges selected during Sample submittals, verify that tile has been factory blended and packaged so tile units taken from one package show same range of colors as those taken from other packages and match approved Samples. If not factory blended, either return to manufacturer or blend tiles at Project site before installing.
- D. Field-Applied Temporary Protective Coating: Where indicated under tile type or needed to prevent grout from staining or adhering to exposed tile surfaces, precoat them with continuous film of temporary protective coating, taking care not to coat unexposed tile surfaces.

### 3.3 INSTALLATION, GENERAL

- A. ANSI Tile Installation Standards: Comply with parts of ANSI A108 Series "Specifications for Installation of Ceramic Tile" that apply to types of setting and grouting materials and to methods indicated in ceramic tile installation schedules.
- B. TCA Installation Guidelines: TCA's "Handbook for Ceramic Tile Installation." Comply with TCA installation methods indicated in ceramic tile installation schedules.
- C. Extend tile work into recesses and under or behind equipment and fixtures to form complete covering without interruptions, unless otherwise indicated. Terminate work neatly at obstructions, edges, and corners without disrupting pattern or joint alignments.
- D. Accurately form intersections and returns. Perform cutting and drilling of tile without marring visible surfaces. Carefully grind cut edges of tile abutting trim, finish, or built-in items for straight aligned joints. Fit tile closely to electrical outlets, piping, fixtures, and other penetrations so plates, collars, or covers overlap tile.
- E. Jointing Pattern: Lay tile in grid pattern, unless otherwise indicated. Align joints when adjoining tiles on floor, base, walls, and trim are same size. Lay out tile work and center tile fields in both directions in each space or on each wall area. Adjust to minimize tile cutting. Provide uniform joint widths, unless otherwise indicated.

- F. Lay out tile wainscots to next full tile beyond dimensions indicated.
- G. Expansion Joints: Locate expansion joints and other sealant-filled joints, including control, contraction, and isolation joints, where indicated during installation of setting materials, mortar beds, and tile. Do not saw-cut joints after installing tiles.
  - 1. Locate joints in tile surfaces directly above joints in concrete substrates.
  - 2. Prepare joints and apply sealants to comply with requirements in Division 7 Section "Joint Sealants."
  - 3. All interior and exterior tile corners shall be caulked with sealant color to match grout color.
- H. Grout tile to comply with requirements of the following tile installation standards:
  - 1. For ceramic tile grouts (sand-portland cement; dry-set, commercial portland cement; and latex-portland cement grouts), comply with ANSI A108.10.
  - 2. For chemical-resistant epoxy grouts, comply with ANSI A108.6.
  - 3. For chemical-resistant furan grouts, comply with ANSI A108.8.
- I. Install cementitious backer units and treat joints to comply with ANSI A108.11 and manufacturer's written instructions for type of application indicated.

### **3.4 FLOOR TILE INSTALLATION**

- A. General: Install tile to comply with requirements in the Floor Tile Installation Schedule, including those referencing TCA installation methods and ANSI A108 Series of tile installation standards.
- B. Joint Widths: Install tile on floors with the following joint widths:
  - 1. Porcelian Tile: 3/16 inch.
- C. Metal Edge Strips: Install at locations indicated or where exposed edge of tile flooring meets carpet, wood, or other flooring that finishes flush with top of tile.

### **3.5 WALL TILE INSTALLATION**

- A. Install types of tile designated for wall installations to comply with requirements in the Wall Tile Installation Schedule, including those referencing TCA installation methods and ANSI setting-bed standards.
- B. Joint Widths: Install tile on walls with the following joint widths:
  - 1. Porcelian Tile: 3/16 inch.

### **3.6 TILE BACKING PANEL INSTALLATION**

- A. Install cementitious backer units and fiber-cement underlayment and treat joints according to ANSI A108.11 and manufacturer's written instructions for type of application indicated. Use latex-portland cement mortar for bonding material unless otherwise directed in manufacturer's written instructions.

### **3.7 WATERPROOFING INSTALLATION**

- A. Install waterproofing to comply with ANSI A108.13 and manufacturer's written instructions to produce waterproof membrane of uniform thickness and bonded securely to substrate.
- B. Do not install tile or setting materials over waterproofing until waterproofing has cured and been tested to determine that it is watertight.

### **3.8 CRACK ISOLATION MEMBRANE INSTALLATION**

- A. Install crack isolation membrane to comply with ANSI A108.17 and manufacturer's written instructions to produce membrane of uniform thickness and bonded securely to substrate.
- B. Do not install tile or setting materials over crack isolation membrane until membrane has cured.

### **3.9 CLEANING AND PROTECTING**

- A. Cleaning: On completion of placement and grouting, clean all ceramic tile surfaces so they are free of foreign matter.
  - 1. Remove latex-portland cement grout residue from tile as soon as possible.
  - 2. Clean grout smears and haze from tile according to tile and grout manufacturer's written instructions, but no sooner than 10 days after installation. Use only cleaners recommended by tile and grout manufacturers and only after determining that cleaners are safe to use by testing on samples of tile and other surfaces to be cleaned. Protect metal surfaces and plumbing fixtures from effects of cleaning. Flush surfaces with clean water before and after cleaning.
  - 3. Remove temporary protective coating by method recommended by coating manufacturer that is acceptable to tile and grout manufacturer. Trap and remove coating to prevent it from clogging drains.
- B. When recommended by tile manufacturer, apply coat of neutral protective cleaner to completed tile walls and floors. Protect installed tile work with kraft paper or other heavy covering during construction period to prevent staining, damage, and wear.
- C. Prohibit foot and wheel traffic from tiled floors for at least seven days after grouting is completed.
- D. Before final inspection, remove protective coverings and rinse neutral cleaner from tile surfaces.

**END OF SECTION 09 31 00**



NOTE: NO INFORMATION OTHER THAN THAT INCLUDED IN OR ATTACHED TO THIS ORIGINAL BID DOCUMENT (WHERE SUCH ATTACHMENT IS PERMITTED) WILL BE USED IN DETERMINING AWARD.

**ORIGINAL (NOT TO BE DETACHED)  
NOTICE TO BIDDEERS**

**CITY OF BALTIMORE  
DEPARTMENT OF RECREATION AND PARKS  
CONTRACT NUMBER: RP 20814**

THE COMPLETE (ORIGINAL)  
CONTRACT BOOK AND  
DUPLICATE OF BID OR  
PROPOSAL MUST BE  
INCLUDED IN THE  
BID ENVELOPE

**MARY E. RODMAN RECREATION CENTER RENOVATION**

**III. BID OR PROPOSAL**

Opening of Bids **NOVEMBER 17, 2021**

Certified Check or Bank Cashier's Check or Bank Treasurer's Check or Bid Bond Equal to  
Two Percent (2%) of Total Bid Submitted.

Days of Completion **270** Consecutive Calendar Days

Liquidated Damages **\$1000.00** per Consecutive Calendar Day

Made this \_\_\_\_\_ day of \_\_\_\_\_ 20\_\_\_\_

By \_\_\_\_\_

\_\_\_\_\_  
(Address)

(NOTE: The Bidder's name and address must be inserted above, and in the case of a Firm, the Name of the Firm and of each and every Member of the Firm must be inserted. In case a Bid shall be submitted by or on behalf of any corporation, the Name of such Corporation must be written above). Shall sign below to signify the following:

To "The Board of Estimates of Baltimore City":

I/We the undersigned Contractor, have familiarized myself/ourselves with the Requirements and Stipulations of the Contract Documents, and the site of the proposed work, and fully understand and appreciated extent and character of the work to be done under the Contract.

I/We propose to furnish all labor, materials, and equipment and to do everything except as otherwise provided in the Contract Documents.

Specifications, Special Provisions, Drawings and /or other Contract Documents hereto attached, at the following prices:

# DUPLICATE

CONTRACT NO. RP20814

NOTE: NO INFORMATION OTHER THAN THAT INCLUDED IN OR ATTACHED TO THIS ORIGINAL BID DOCUMENT (WHERE SUCH ATTACHMENT IS PERMITTED) WILL BE USED IN DETERMINING AWARD.

**ORIGINAL (NOT TO BE DETACHED)**  
**NOTICE TO BIDDEERS**

**CITY OF BALTIMORE**  
**DEPARTMENT OF RECREATION AND PARKS**  
**CONTRACT NUMBER: RP 20814**

THE COMPLETE (ORIGINAL)  
CONTRACT BOOK AND  
DUPLICATE OF BID OR  
PROPOSAL MUST BE  
INCLUDED IN THE  
BID ENVELOPE

**MARY E. RODMAN RECREATION CENTER RENOVATION**

**III. BID OR PROPOSAL**

Opening of Bids **NOVEMBER 17, 2021**

Certified Check or Bank Cashier's Check or Bank Treasurer's Check or Bid Bond Equal to  
Two Percent (2%) of Total Bid Submitted.

Days of Completion **270** Consecutive Calendar Days

Liquidated Damages **\$1000.00** per Consecutive Calendar Day

Made this \_\_\_\_\_ day of \_\_\_\_\_ 20\_\_\_\_

By \_\_\_\_\_

\_\_\_\_\_  
(Address)

(NOTE: The Bidder's name and address must be inserted above, and in the case of a Firm, the Name of the Firm and of each and every Member of the Firm must be inserted. In case a Bid shall be submitted by or on behalf of any corporation, the Name of such Corporation must be written above). Shall sign below to signify the following:

To "The Board of Estimates of Baltimore City":

I/We the undersigned Contractor, have familiarized myself/ourselves with the Requirements and Stipulations of the Contract Documents, and the site of the proposed work, and fully understand and appreciated extent and character of the work to be done under the Contract.

I/We propose to furnish all labor, materials, and equipment and to do everything except as otherwise provided in the Contract Documents.

Specifications, Special Provisions, Drawings and /or other Contract Documents hereto attached, at the following prices:

**MAYOR AND CITY COUNCIL OF BALTIMORE CITY  
BALTIMORE CITY CODE, ARTICLE 5, SUBTITLE 28  
MINORITY AND WOMEN'S BUSINESS PROGRAM**

**MBE AND WBE PARTICIPATION  
COMMITMENT FORMS**

Name of Bidder (Proposer) \_\_\_\_\_

Address \_\_\_\_\_

Contracting Agency: CAPITAL DEVELOPMENT AND PLANNING, DEPARTMENT OF RECREATION  
AND PARKS

Contract (Project) Title: MARY E. RODMAN RECREATION CENTER RENOVATION

Contract Number: RP20814

Bid Due Date: 11/17/21

The MBE goal is 23%      The WBE goal is 7%

If MBE Sub-Goals Apply:

African American ..... \_\_\_\_\_%

Asian American ..... \_\_\_\_\_%

Hispanic American ..... \_\_\_\_\_%

Native American ..... \_\_\_\_\_%

**THIS PACKAGE OF MBE AND WBE PARTICIPATION  
COMMITMENT FORMS IS DUE WITH THE BID.**

FOR MORE INFORMATION OR ASSISTANCE WITH THESE FORMS CONTACT:

Minority and Women's Business Opportunity Office (MWBOO)

Baltimore City Department of Law

Room 101, City Hall

100 N. Holliday Street

Baltimore, MD 21202

(410)396-4355

E-Mail: [MBWOOCompliance@baltimorecity.gov](mailto:MBWOOCompliance@baltimorecity.gov) (Attention: MBE/WBE Bid Packet)

<b>PART E: MBE/WBE PARTICIPATION WAIVER REQUEST FORM</b>
--

Name of Bidder (Proposer) \_\_\_\_\_

Address \_\_\_\_\_

Contracting Agency: **CAPITAL DEVELOPMENT AND PLANNING, DEPARTMENT OF RECREATION AND PARKS**Contract (Project) Number and Title: **RP 20814, MARY E. RODMAN RECREATION CENTER RENOVATION** Bid Due Date: **11/17/21****Goals on this contract..... MBE: 23% and WBE: 7%**

If MBE Sub-Goals Apply:

African American: \_\_\_\_\_% Asian American: \_\_\_\_\_%

Hispanic American: \_\_\_\_\_% Native American: \_\_\_\_\_%

**I have achieved.....MBE: \_\_\_\_\_% and WBE: \_\_\_\_\_%**

If MBE Sub-Goals Apply:

African American: \_\_\_\_\_% Asian American: \_\_\_\_\_%

Hispanic American: \_\_\_\_\_% Native American: \_\_\_\_\_%

**I am requesting a waiver of.....MBE: \_\_\_\_\_% and WBE: \_\_\_\_\_%**

If MBE Sub-Goals Apply:

African American: \_\_\_\_\_% Asian American: \_\_\_\_\_%

Hispanic American: \_\_\_\_\_% Native American: \_\_\_\_\_%

I have contacted MWBOO for assistance: \_\_\_\_\_Yes \_\_\_\_\_No (*Check One*)Number of MBE firms contacted: \_\_\_\_\_ (*Attach a list of names.*)Number of WBE firms contacted: \_\_\_\_\_ (*Attach a list of names.*)

Explain why waiver is being requested:

Attach documentation of your good faith efforts to secure, contact and negotiate with MBEs and WBEs, including:

- (1) The reasons your company is unable to secure sufficient MBE/WBE participation to meet the stated goals
- (2) The efforts made by your company to select portions of the contract to be performed by MBEs and WBEs
- (3) For each MBE or WBE that placed a bid that you consider to be unacceptable, a statement that explains the basis for that conclusion

\_\_\_\_\_  
Signature of Authorized Company Representative\_\_\_\_\_  
Date

**D. MAYOR AND CITY COUNCIL OF BALTIMORE, MARYLAND**  
**THE BALTIMORE APPRENTICE TRAINEE PROGRAM (BATP)**  
**BID FORM**

Contracting Agency      DEPARTMENT OF RECREATION AND PARKS Contract

(Project Title) **RP20814 Mary E. Rodman Recreation Center**

**Renovation** Scheduled Bid Due Date: **Wednesday, November 17, 2021**

THIS APPRENTICE TRAINEE FORM IS DUE WITH THE BID.

FOR MORE INFORMATION ABOUT THIS FORM OR ASSISTANCE, CONTACT:

Minority and Women's Business Opportunity Office (MWBOO)  
100 N. Holliday Street, Rm. 101  
Baltimore, MD 21202  
(410) 396-4355  
Christopher R. Lundy, Chief

MWBOO (08/21)

**Employ Baltimore**  
**CERTIFICATION STATEMENT**

<b>Contracting City Agency</b>	<b>Bid Number</b>	<b>Bid Due Date</b>
Department of Recreation and Parks	RP20814	November 17, 2021

To promote the commitment to utilize ***Employ Baltimore*** to meet employment needs, all businesses awarded contracts, franchises and development opportunities with the City of Baltimore, shall comply with the terms of the Executive Order as described in the bid specification. Under this agreement, contract awardees will complete and submit this certification statement with the bid package.

This Executive Order shall apply to contracts awarded by the City that are in the amounts of \$50,000.01 to \$300,000.00, except for professional service contracts and emergency contracts.

Additionally, companies awarded construction contracts that fully participate in the ***Employ Baltimore*** program and submit and comply with the certification statement, may receive an early release of or reduction in the retainage fee assigned to the contract.

**CERTIFICATION STATEMENT**

As a representative of \_\_\_\_\_, I \_\_\_\_\_  
 (NAME OF COMPANY) (PRINT NAME and TITLE)

Certify that a company representative will schedule a meeting with the Mayor's Office of Employment Development within two weeks of contract award to review the workforce plan required for this contract.

If there is a need for additional employees, I agree to post the new job openings with MOED's One Stop Career Center Network for seven (7) days prior to publicly advertising these openings. I agree to interview qualified Baltimore City residents referred from MOED. I agree to submit an Employment Report on June 30th and December 31st identifying the total number of workers on this project and total number of Baltimore City residents on payroll during each year of the contract and at the contract completion as a condition of release of the final payment or any retainage due.

Name: \_\_\_\_\_ Telephone: \_\_\_\_\_

Company Address \_\_\_\_\_ Email: \_\_\_\_\_

**Yvette Clark or Katelyn Murphy**  
**Mayor's Office of Employment Development**  
**36 S. Charles Street**  
**Baltimore, Maryland 21201**  
**Phone 443-984-3014 • Fax 443-220-0510**  
[employbaltimore@oedworks.com](mailto:employbaltimore@oedworks.com)



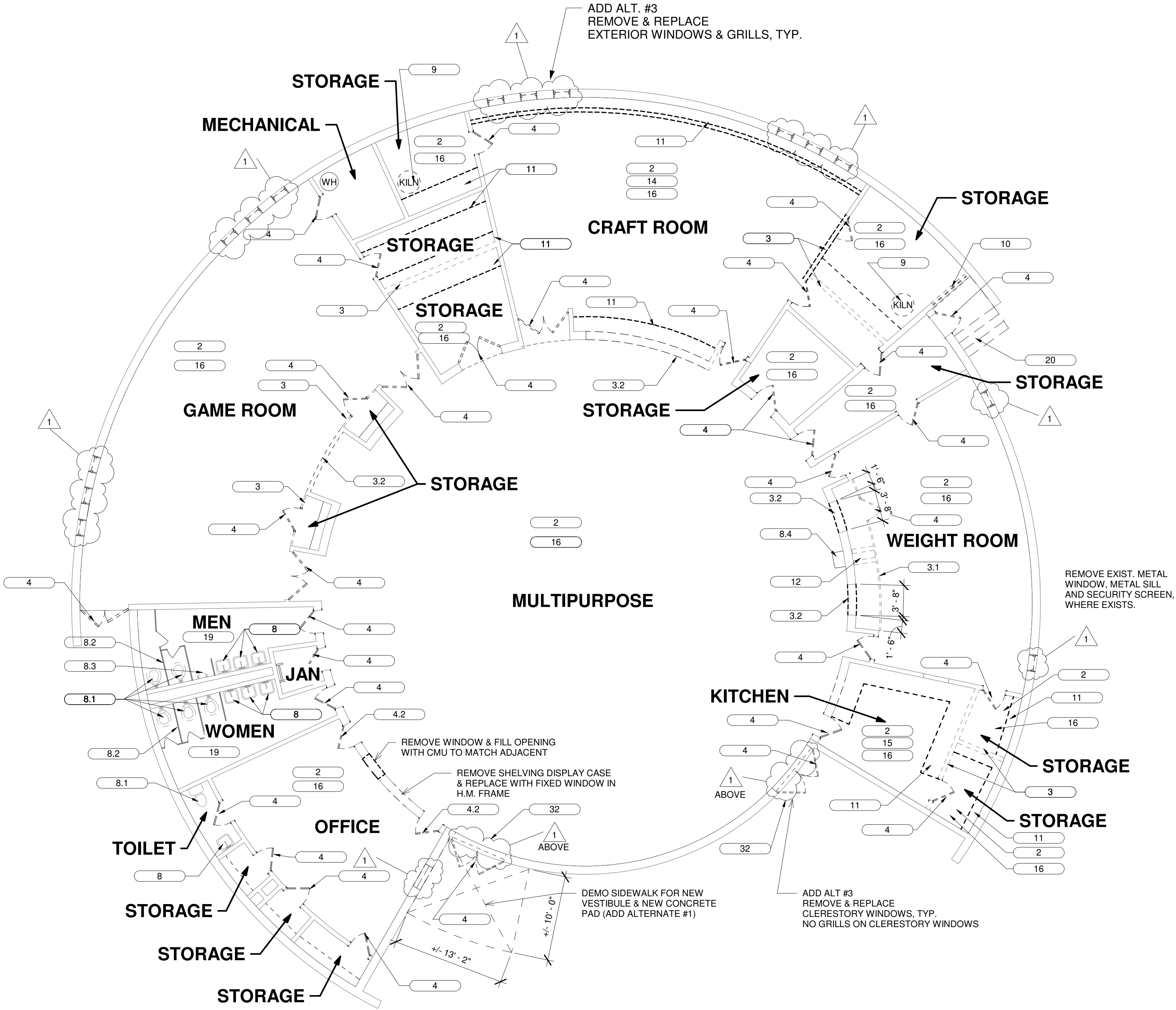
ABBREVIATIONS				BALTIMORE CITY RECREATION & PARKS  MARY E. RODMAN RECREATION CENTER RENOVATION  3600 W MULBERRY ST BALTIMORE, MARYLAND 21229  <i>CONSTRUCTION DOCUMENTS</i>  OCTOBER 12, 2021				SHEET LIST			
ACT A/C ADJ AFF A.B.E.  A.H.U. ALUM APPROX ARCH @  B.C. BD. BITUM. BLDG. BLK. BLKD. BLKG.  C C.B. CL CLG. CMU COL CONC. CONT. C.J. CPT. C.T.  D. DEMO D.F. DIM. DN. DTL DIA DS DWG.  E.J. EL ELEC. ELEV. ETC E.T.R. EQUIP. EXIST. EXT  F.E.C.  F.D. F.F.E. FIN FL. OR FLR. FOM FT F.V.W.A.  GA GALV GYP. BD. GSF GWB GT  H OR HT HC H.M. HORIZ. HR HVAC  IN INSUL. INT.  JAN. JT  L LAV. L.H.  MACH. MAT'L MAX. M.E. MECH. MEP  MIN. MISC. M.O. MTD MTL  NO. OR # NOM. N.I.C. NSF N.T.S.  O.C. OPNG.  P-LAM PLYWD P.T. PTD.		REF. REQ'D R.H. RM  SF S.G.T. SHT. SIM. S.O.G. SNT. SPEC. STD. STL. S.S. STOR. STRUCT. SQ. SUSP.  T & G TEMP TH. T.O.S. T.O.J. TLT. TYP.  U.N.O.  V.C.T. VERT. V.I.F. V.I.F.W.A.  W/ W. W.B. W.C. WD. W/O						REFRIDGERATOR REQUIRED RIGHT HAND ROOM  SQUARE FEET STRUCTURAL GLAZED TILE SHEET SIMILAR SLAB ON GRADE SEALANT SPECIFICATION STANDARD STEEL STAINLESS STEEL STORAGE STRUCTURE SQUARE SUSPENDED  TONGUE & GROOVE TEMPORARY THICK TOP OF SLAB TOP OF JOIST TOILET TYPICAL  UNLESS NOTED OTHERWISE  VINYL COMPOSITION TILE VERTICAL VERIFY IN FIELD VERIFY IN FIELD WITH ARCHITECT  WITH WIDTH WALL BOARD WATER CLOSET WOOD WITHOUT		COVER SHEET CODE SUMMARY  ARCHITECTURAL AD-100 DEMOLITION PLAN A-101 NEW FLOOR PLAN A-103 ROOF PLAN (ADD ALTERNATE) A-104 FINISH PLANS A-107 REFLECTED CEILING PLAN A-200 OVERALL EXTERIOR ELEVATIONS A-300 BUILDING SECTIONS A-301 WALL SECTIONS A-303 ENTRY VESTIBULE (ADD ALTERNATE) A-400 INTERIOR ELEVATIONS MULTI-PURPOSE ROOM A-401 TOILET ROOM PLANS AND ELEVATIONS A-402 WARMING KITCHEN PLAN/ELEVATIONS A-501 ROOF DETAILS (ADD ALTERNATE) A-600 DOOR SCHEDULE & PARTITION TYPES A-601 DOOR DETAILS A-602 INTERIOR HOLLOW METAL A-603 SIGNAGE  STRUCTURAL S-100 GENERAL NOTES S-201 FIRST FLOOR PLAN S-202 LOWER ROOF PLAN S-301 TYPICAL DETAILS S-302 TYPICAL DETAILS S-303 TYPICAL DETAILS S-401 SECTION AND DETAILS  MECHANICAL M-001 MECHANICAL SYMBOLS, ABBREVIATIONS, & GENERAL NOTES MD-101 MECHANICAL DEMOLITION PLAN M-101 MECHANICAL NEW WORK PLANS M-201 MECHANICAL SCHEDULE M-301 MECHANICAL DETAILS  ELECTRICAL E-001 ELECTRICAL SYMBOLS, ABBREVIATIONS, & GENERAL NOTES ED-101 ELECTRICAL DEMOLITION PLAN E-101 ELECTRICAL POWER NEW WORK PLANS E-102 ELECTRICAL POWER NEW WORK PLANS E-201 ELECTRICAL SCHEDULES  PLUMBING P-001 PLUMBING SYMBOLS, SCHED., ABBREVIATIONS, & GENERAL NOTES PD-101 PLUMBING DEMOLITION PLAN P-101 PLUMBING NEW WORK PLANS P-201 PLUMBING DETAILS, & RISER DIAGRAMS	
								SYMBOLS			



GENERAL DEMOLITION NOTES:

1. REMOVE ALL EXISTING CONSTRUCTION AND FINISHES NECESSARY FOR THE COMPLETION OF THE WORK AS DEPICTED ON THE DRAWINGS INCLUDING BUT NOT LIMITED TO ITEMS SHOWN ON THE PLANS WITH DASHED LINES.
2. CONDUCT DEMOLITION TO MINIMIZE INTERFERENCE WITH ADJACENT SPACES. PROTECT ALL EXISTING ITEMS, SURFACES, AND FINISHES TO REMAIN.
3. CONTRACTOR SHALL BE RESPONSIBLE FOR PROVIDING ALL TEMPORARY SHORING AND BRACING WHERE NECESSARY.
4. COORDINATE AND DISCONNECT UTILITIES AS REQUIRED FOR COMPLETION OF THE WORK. COORDINATE WITH MECHANICAL, ELECTRICAL, AND PLUMBING DRAWINGS.
5. CAP AND IDENTIFY ABANDONED UTILITIES AT TERMINATION POINTS.
6. CONTRACTOR SHALL MAINTAIN EXISTING UTILITIES INDICATED TO REMAIN IN SERVICE AND PROTECT AGAINST DAMAGE DURING DEMOLITION.
7. CONTRACTOR SHALL REMOVE WASTE AND DEBRIS FROM PROJECT SITE DAILY TO KEEP SITE CLEAR AND SAFE. CONTRACTOR SHALL COORDINATE LOCATION OF DUMPSTER WITH OWNER.
8. CONTRACTOR SHALL MAINTAIN RECYCLING AND ROLL-OFF CONTAINER AREAS IN A NEAT AND CLEAN CONDITION.
9. CONTRACTOR SHALL ENSURE THAT UTILITY SERVICES ARE MAINTAINED AND DISCONNECTED ONLY WHERE REQUIRED FOR COMPLETION OF THE WORK. WHEN OUTAGES ARE REQUIRED, NOTIFICATION SHALL BE PROVIDED TO THE ENGINEER AT LEAST 48 HOURS IN ADVANCE.
10. DEMOLITION WORK SHOWN IS BASED ON EXISTING DRAWINGS AND INSPECTIONS. THE CONTRACTOR SHALL VISUALLY INSPECT ALL EXISTING CONDITIONS AND IS RESPONSIBLE FOR PERFORMING THE INDICATED DEMOLITION WORK EVEN IF ACTUAL CONDITIONS DIFFER FROM THOSE ON THE DRAWINGS. CONTRACTOR SHALL NOTIFY ENGINEER OF ANY EXISTING CONDITIONS THAT DIFFER FROM THOSE INDICATED ON THE DRAWINGS.
11. DEMOLITION CONTRACTOR SHALL COORDINATE WITH NEW WORK FOR ADDITIONAL INFORMATION RELATED TO THE EXTENT OF DEMOLITION.
12. ITEMS TO BE DEMOLISHED SHALL BE REMOVED COMPLETELY INCLUDING ALL ANCHORS, HANGERS, FASTENERS, PIPES, CONDUIT, DUCTS, ETC. UNLESS OTHERWISE INDICATED TO BE ABANDONED IN PLACE.
13. CONCRETE SLAB PATCHES MUST BE FLUSH WITH REMAINING SURFACES TO PERMIT APPLICATION OF NEW FINISHES.
14. REMOVE, PATCH, AND REPAIR PORTIONS OF WALL PARTITIONS WHICH CONFLICT WITH NEW WORK TO BE INSTALLED, EVEN IF NOT SPECIFICALLY NOTED TO BE DEMOLISHED ON PLANS. CONTRACTOR SHALL BE RESPONSIBLE FOR MAINTAINING THE INTEGRITY OF THE EXISTING BUILDING ELEMENTS TO REMAIN THROUGHOUT SEQUENCE OF WORK. ANY DAMAGE TO EXISTING BUILDING CONDITIONS SHOWN TO REMAIN SHALL BE RESTORED TO NEW WORK CONDITION AT NO ADDITIONAL COST TO THE ENGINEER.
16. WHERE NEW CEILINGS ARE SPECIFIED, NO DOUBLE CEILINGS PERMITTED. REMOVE ALL ORIGINAL CONCEALED CEILINGS WHERE ENCOUNTERED.
17. ALL EXISTING SURFACES TO REMAIN SHALL BE PROTECTED, PATCHED IF DAMAGED AND CLEANED PRIOR TO APPLICATION OF NEW FINISHES.
18. REMOVE MECHANICAL, ELECTRICAL, PLUMBING (MEP), AND STRUCTURAL ITEMS AS NOTED ON THE MECHANICAL, ELECTRICAL, AND PLUMBING AND STRUCTURAL DRAWINGS. COORDINATE WITH MEP AND STRUCTURAL FOR ADDITIONAL DEMOLITION NOTES. CONTRACTOR SHALL REFER TO ALL MEP AND STRUCTURAL DRAWINGS AND SPECIFICATIONS FOR PROCEDURES CONCERNING RELATED TRADES IN AREAS WHICH REQUIRE SUCH DEMOLITION.

KEYNOTE LEGEND	
TAG	DESCRIPTION
2	REMOVE ACOUSTIC CEILING TILES AND GRID
3	REMOVE INTERIOR MASONRY PARTITION TO EXTENT SHOWN
3.1	REMOVE INTERIOR PARTITION TO EXTENT SHOWN
3.2	REMOVE EXISTING INTERIOR PARTITION TO EXTENT SHOWN FOR NEW H.M./GLASS OPENING
4	REMOVE EXISTING DOOR AND DOOR FRAME
4.2	REMOVE EXISTING DOOR AND FRAME; ENLARGE OPENING FOR NEW DOOR
8	REMOVE EXISTING LAVATORY AND ASSOCIATED PIPING
8.1	REMOVE EXISTING TOILET
8.2	REMOVE EXISTING TOILET PARTITIONS
8.3	REMOVE EXISTING URINAL
8.4	REMOVE EXISTING DRINKING FOUNTAIN
9	REMOVE EXISTING KILN, ASSOCIATED POWER, AND ALL ASSOCIATED EXHAUST AND WIRING
10	REMOVE EXISTING STOREFRONT AND DOORS.
11	REMOVE EXISTING CASEWORK
12	REMOVE EXISTING OPERABLE PARTITION
14	REMOVE ALL DISPLAY CASES, BULLETIN BOARDS, DISPLAY TRIMS, AND BLACKBOARDS
15	DEMOLISH EXISTING KITCHEN APPLIANCES.
16	REMOVE EXISTING FLOOR FINISH AND WALL BASE
19	REMOVE ALL WALL-MOUNTED SOAP DISPENSERS, PAPER TOWEL HOLDERS, AND MIRRORS.
20	REMOVE EXISTING CONCRETE STEPS AND LANDING
32	REMOVE EXIST. METAL WINDOW, METAL SILL AND SECURITY SCREEN, WHERE EXISTS.



1 DEMOLITION PLAN  
1/8" = 1'-0"

BALTIMORE CITY RECREATION & PARKS  
**MARY E. RODMAN RECREATION  
CENTER RENOVATION**  
3600 W Mulberry St, Baltimore, MD 21229

*Murphy & Dittenhafer*  
ARCHITECTS  
228 West Market Street, York, Pennsylvania 17401  
410-652-4823 voice 410-652-4874 fax

Mark	Date	Description
1	11/01/2021	ADDENDUM #3

Revision Schedule		
No.	Description	Date
1	Addendum #3	10/12/21

PROJECT NO: 20119  
DRAWN BY: AWO  
CHECKED BY: KSS

DEMOLITION  
PLAN

SHEET  
AD-100



Revision Schedule		
No.	Description	Date
1	Addendum #3	10/12/21

## NEW FLOOR PLAN

A-101

KEYNOTE LEGEND	
TAG	DESCRIPTION
06 40 23.A7	ADJUSTABLE 12" DEEP WIRE SHELVING, 6'-0" TALL, MOUNTED TO WALL.
09 65 00.A2	VINYL COMPOSITION TILE FLOORING
09 65 00.B5	4" RESILIENT TOPSET BASE THROUGHOUT ROOM
09 65 66	RESILIENT ATHLETIC FLOORING
22 40 00.A1	ADA-COMPLIANT DRINKING FOUNTAIN

GENERAL INTERIOR NOTES:

1. REPAINT ALL EXISTING CURRENTLY PAINTED AND NEWLY CREATED SURFACES (WALLS, DOORS, TRIM, ETC.).
2. ALL SURFACES TO BE PROPERLY PREPARED FOR NEW PAINT PER MANUFACTURER'S SPECIFICATIONS, INCLUDING SANDING AND PATCHING OF ALL CRACKS/HOLES IN CMU, ETC.
3. PROVIDE ALL NECESSARY PROTECTION TO ENSURE THAT NO SURROUNDING MATERIALS ARE DAMAGED BY PAINT (I.E. LIGHT FIXTURES, FURNITURE, FLOORING, ETC).
4. NEW 4" VINYL BASE THROUGHOUT (EXCEPT TOILET ROOMS OR WHERE NOTED)
5. PRIOR TO COMMENCING FLOORING WORK, THE CONTRACTOR SHALL INSPECT FLOORING AND SHALL NOTIFY ENGINEER IN WRITING OF ANY OBVIOUS DEFECTS OR CONDITIONS THAT WILL PREVENT A SATISFACTORY FLOOR INSTALLATION. WORK SHALL NOT PROCEED UNTIL SATISFACTORY CONDITIONS ARE PROVIDED.
6. FLASH PATCHING OF THE EXISTING SLAB TO BE DONE TO LEVEL SLOPED AND/OR UNEVEN SURFACES. FLASH PATCH EXISTING CONCRETE TO BE SMOOTH AND FLAT.
7. PATCH/REPAIR ALL WALLS AND CEILINGS WHERE EXISTING WALL OR ITEMS WERE REMOVED AS REQUIRED.
8. PATCH ALL OPENINGS WHERE AN EXISTING FUTURE, RECEPTACLE OUTLET, LIGHT SWITCH, OR OTHER ITEM WAS REMOVED.
9. WHERE HOLES/CRACKS IN EXISTING MASONRY WALLS EXIST, REPLACE THE FACE SHEET SUFFICIENT TO MAKE MASONRY SUBSTANTIAL AND SECURE PRIOR TO PROCEEDING.
10. ALL WORK SHALL BE PERFORMED IN ACCORDANCE WITH THE LATEST PUBLISHED RECOMMENDATIONS OF THE TILE COUNCIL OF AMERICA (TCA) AND THE AMERICAN NATIONAL STANDARDS INSTITUTE (ANSI)

**CONCRETE PAINT SPECIFICATION (EXISTING CONCRETE STAIR RETAINING WALLS ONLY)**  
**AMERICAN SAFETY TECHNOLOGIES'**  
 CONTACT: (800) 631-7841, www.asantislip.com  
 PRODUCT REF. PHIL SHINE - ITW ENGINEERED POLYMERS  
 T: (215) 855-8450 X 1456, pshine@itwep.com  
 ANTI-SLIP COATING  
 SERIES # AS-75, SINGLE COMPONENT ELASTOMERIC ACRYLIC FLOOR AND DECK COATING.  
 PRIMER/SEALER: PS 100 WB, LOW V.O.C. WATERBASED EPOXY PRIMER/SEALER, TWO COMPONENT EPOXY  
 FOR AGED AND UNCURED CONCRETE  
 APPLICATION: SPRAYED FOR A UNIFORM APPEARANCE, WITH GOOD ANTI-SLIP CHARACTERISTICS.  
 COLOR AS SELECTED BY ARCHITECT FROM SHERWIN WILLIAMS

SAW-CUT & REMOVE CRACK CONC. SLAB SECTION NOTED W/ 'X'. FIELD MEASURE FOR ACTUAL SIZE (TYP.)

CLEAN/REPAIR (5) CRACKS: REMOVE DIRT/DEBRIS, INSTALL 'SIKA CRACK FLEX SEALANT' FLUSH & PAINT PER CONC. PAINT SPEC.

EXP. JT. MAT'L AT RADIUS (TYP.)

TOOLED C.J. (TYP.)

EXP. JT. MAT'L AT RADIUS (TYP.)

REMOVE CRACK CONC. SLAB SECTION NOTED W/ 'X'. FIELD MEASURE FOR ACTUAL SIZE (TYP.)

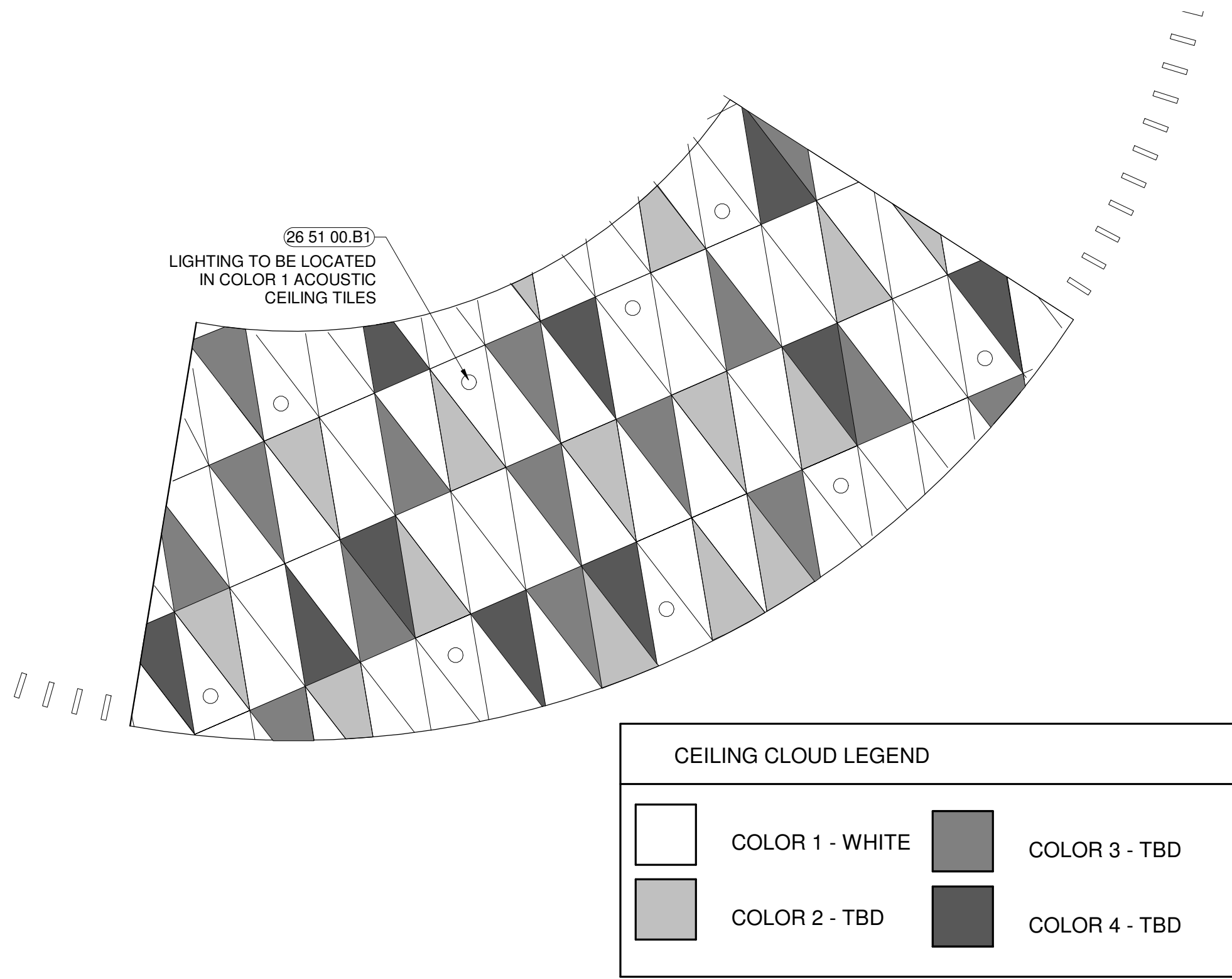
NOTE: INSTALL NEW 4" THK CONC. SLAB W/ 6X6 W2.5XW2.5 W.W.F. - 3,000 PSI CONC. FINISHED TO MATCH EXISTING. INSTALL 1/2" THK EXP. JT. MAT'L BETWEEN NEW & EXIST. CONC. / REUSE EXIST. STONE BED & PROVIDE ADD'T 2" B.

# PARTIAL SITE PLAN

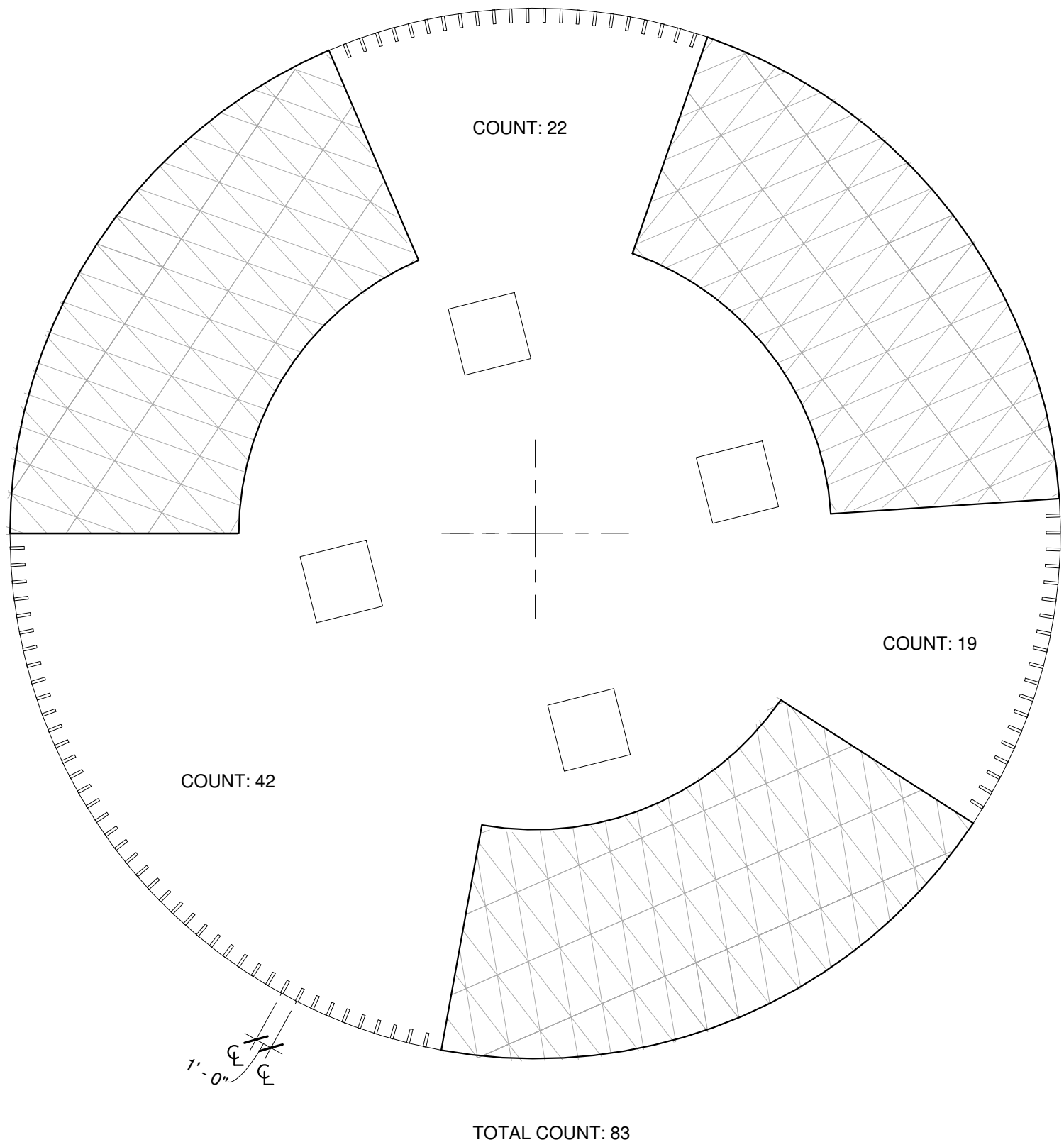
NO SCALE



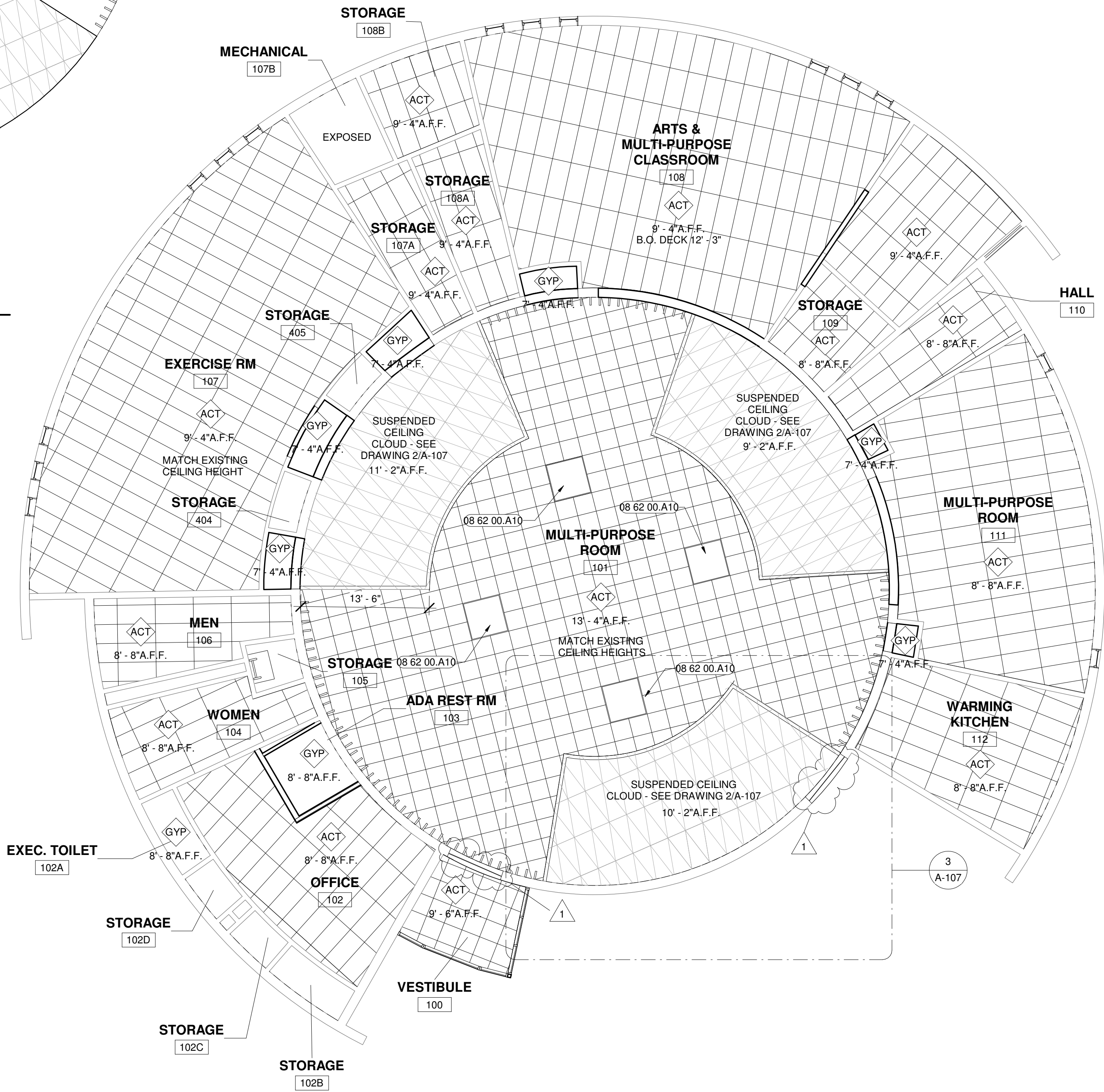
KEYNOTE LEGEND	
TAG	DESCRIPTION
08 62 00.A10	48" DOUBLE GLAZED DOME SKYLIGHT; CONTRACTOR TO VERIFY DIMENSIONS IN FIELD
26 51 00.B1	RECESSED DOWNLIGHT, SEE ELECTRICAL DWGS.



ACOUSTIC CEILING CLOUD TILE PATTERN TYP  
1/4" = 1'-0"



FIRST FLOOR REFLECTED CEILING PLAN - VERTICAL ACOUSTICAL WALL  
BLADES  
1/8" = 1'-0"



FIRST FLOOR REFLECTED CEILING PLAN  
1/8" = 1'-0"



MULTI PURPOSE ROOM 101 - INTERIOR PERSPECTIVE OF CEILING CLOUDS

BALTIMORE CITY RECREATION & PARKS  
**MARY E. RODMAN RECREATION  
CENTER RENOVATION**  
3600 W Mulberry St, Baltimore, MD 21229

*Murphy & Dittenhafer*  
ARCHITECTS  
228 West Market Street, York, Pennsylvania 17401  
717-545-5827 voice 717-543-3449 fax  
805 North Charles Street, Baltimore, Maryland 21201  
410-625-4823 voice 410-625-4874 fax

Mark	Date	Description
1	11/01/2021	ADDENDUM #3

Revision Schedule		
No.	Description	Date
1	Addendum #3	10/12/21

PROJECT NO: 20119  
DRAWN BY: AWO  
CHECKED BY: KSS

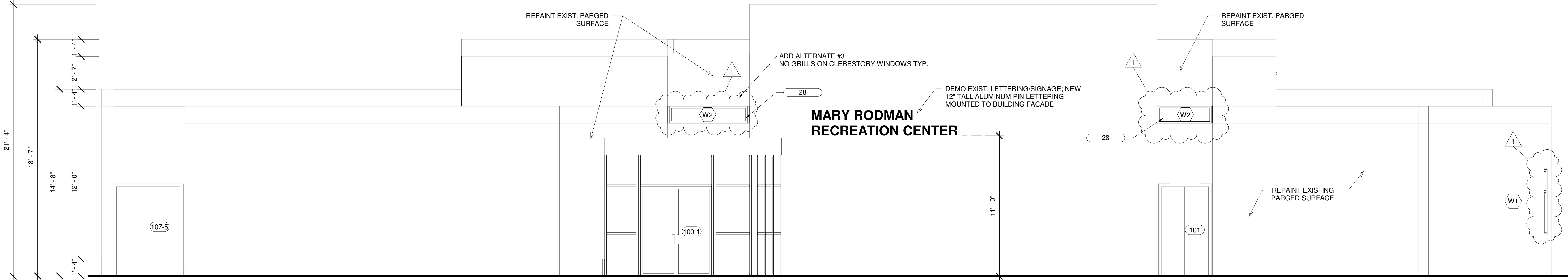
REFLECTED  
CEILING PLAN

SHEET  
**A-107**

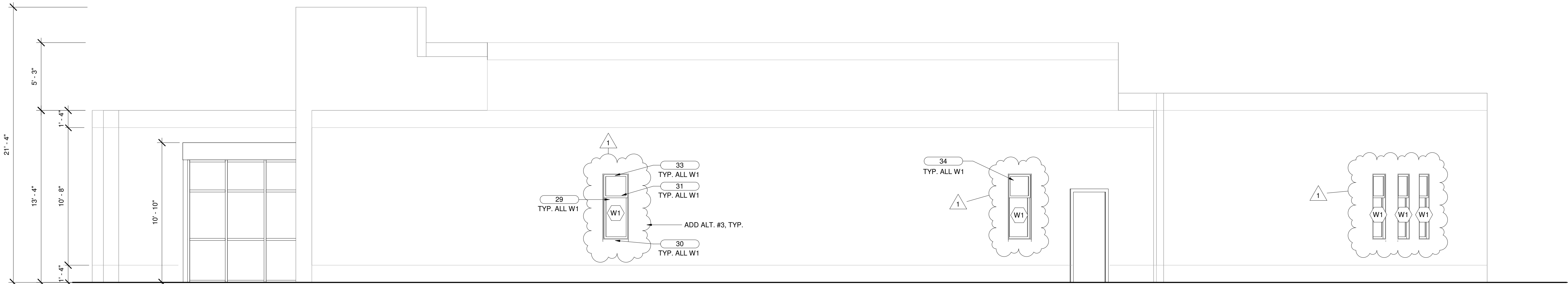


- GENERAL EXTERIOR NOTES:**
1. GENTLY CLEAN EXISTING EXTERIOR MASONRY OF DIRT AND STAINS USING MILD DETERGENT SOLUTION AND SOFT BRISTLE BRUSHES.
  2. GENTLY CLEAN ALL WINDOWS AND METAL SECURITY SCREENS.

KEYNOTE LEGEND	
TAG	DESCRIPTION
28	EXT. SIDE OF FRAME WILL REQ. VERT. JAMB EXTENSION FOR TO MEET CMU DUE TO WALL RADIUS
29	FULL M.O. SECURITY SCREEN
30	SLOPED ALUM. SILL TYP.
31	2" x 4 1/2" ALUM. STOREFRONT FIXED WINDOW FRAME W/ 1" TEMP. CLEAR INSUL. GLASS. PROVIDE ALUM. SUB-SILL TYP.
33	WIRE BRUSH EXIST. STL. LINTELS TO REMOVE RUST, AND PRIME/ FINISH PAINT IN BLACK COLOR TYP. ALL WINDOWS
34	INSTALL NEW TYP.



② SOUTH ELEVATION  
1/4" = 1'-0"



① EAST ELEVATION  
1/4" = 1'-0"

BALTIMORE CITY RECREATION & PARKS  
**MARY E. RODMAN RECREATION  
CENTER RENOVATION**  
3600 W Mulberry St, Baltimore, MD 21229

*Murphy & Dittenhafer*  
**A R C H I T E C T S**  
228 West Market Street, York, Pennsylvania 17401  
410-652-4823 voice 410-652-4874 fax 717-643-3449 fax

Mark	Date	Description
1	11/01/2021	ADDENDUM #3

Revision Schedule		
No.	Description	Date
1	Addendum #3	10/12/21

PROJECT NO: 20119  
DRAWN BY: AWO  
CHECKED BY: KSS

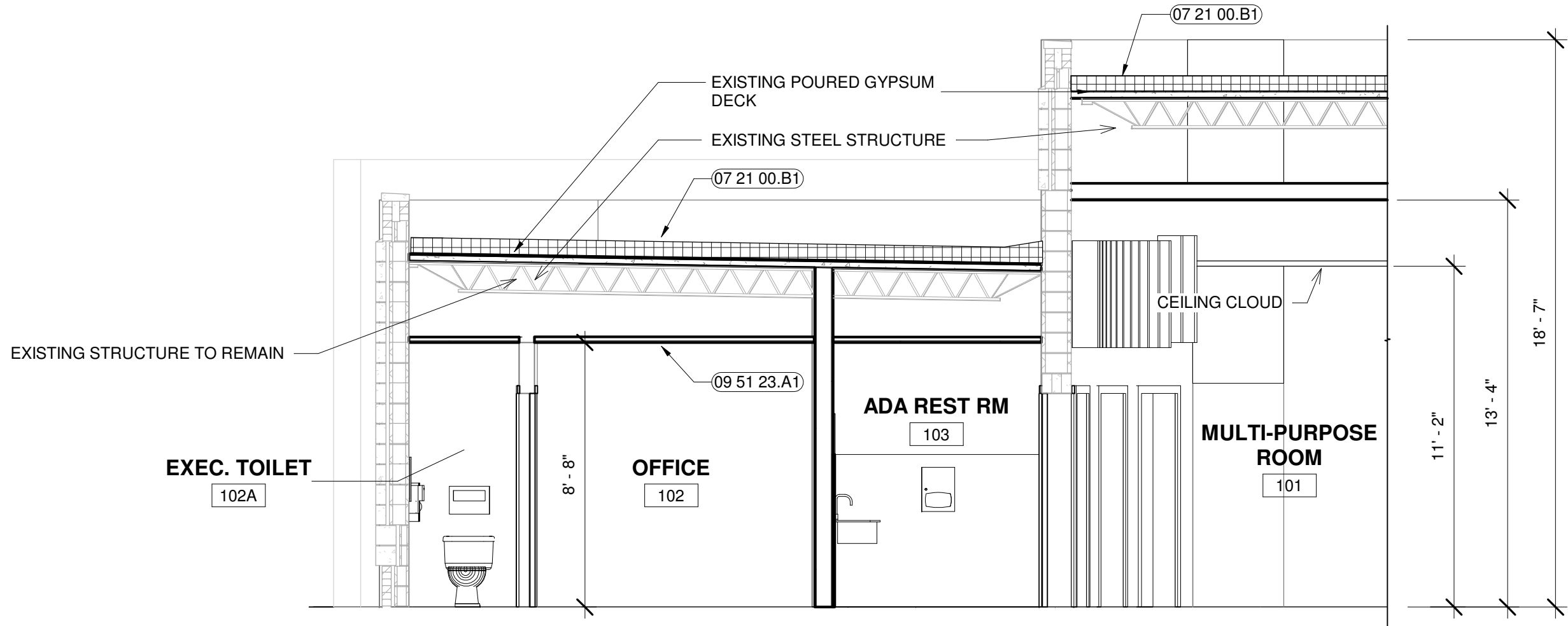
ENLARGED  
EXTERIOR  
ELEVATIONS

SHEET  
**A-200**

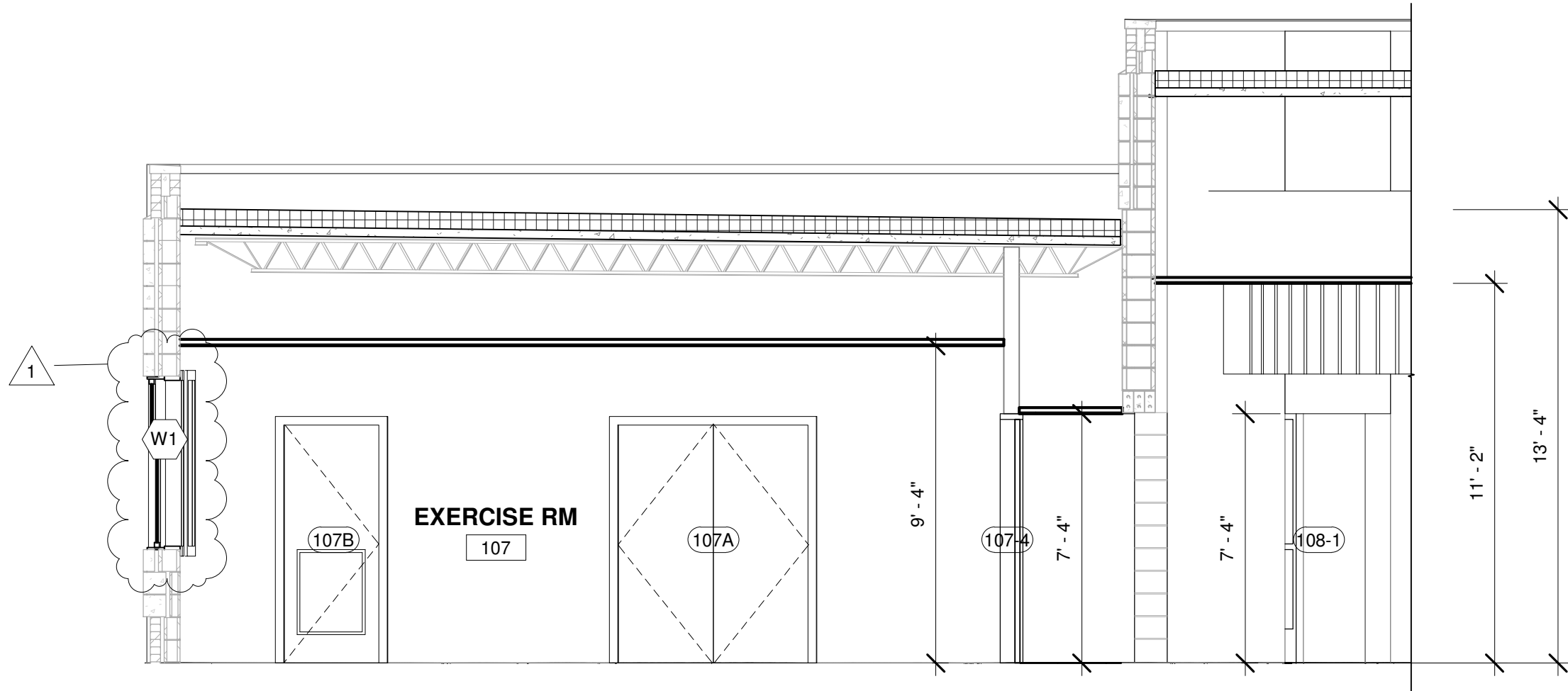




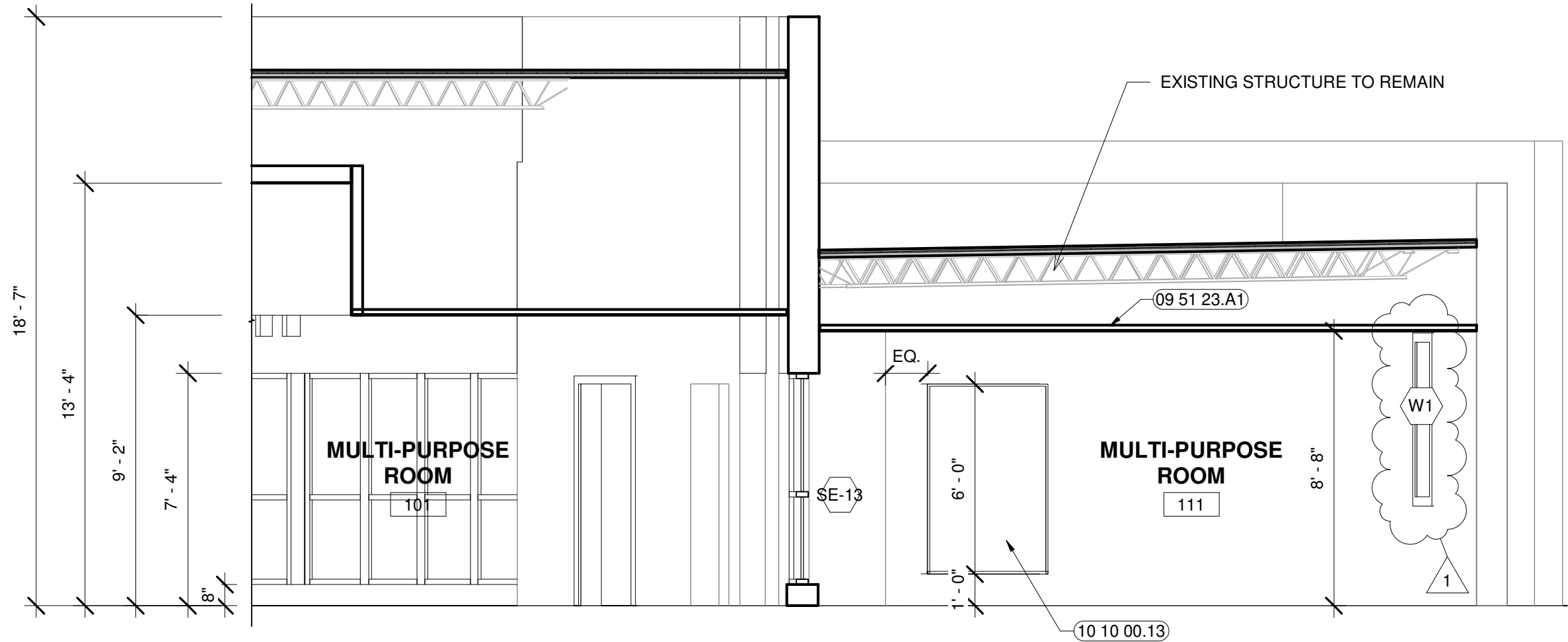
KEYNOTE LEGEND	
TAG	DESCRIPTION
07 21 00.B1	6" RIGID INSULATION (R-30)
09 51 23.A1	2X4 (24" X 48") LAY-IN ACOUSTICAL TILE CEILING
10 10 00.13	6' X 4' PORCELAIN STEEL MARKER BOARD
22 40 00.A1	ADA-COMPLIANT DRINKING FOUNTAIN



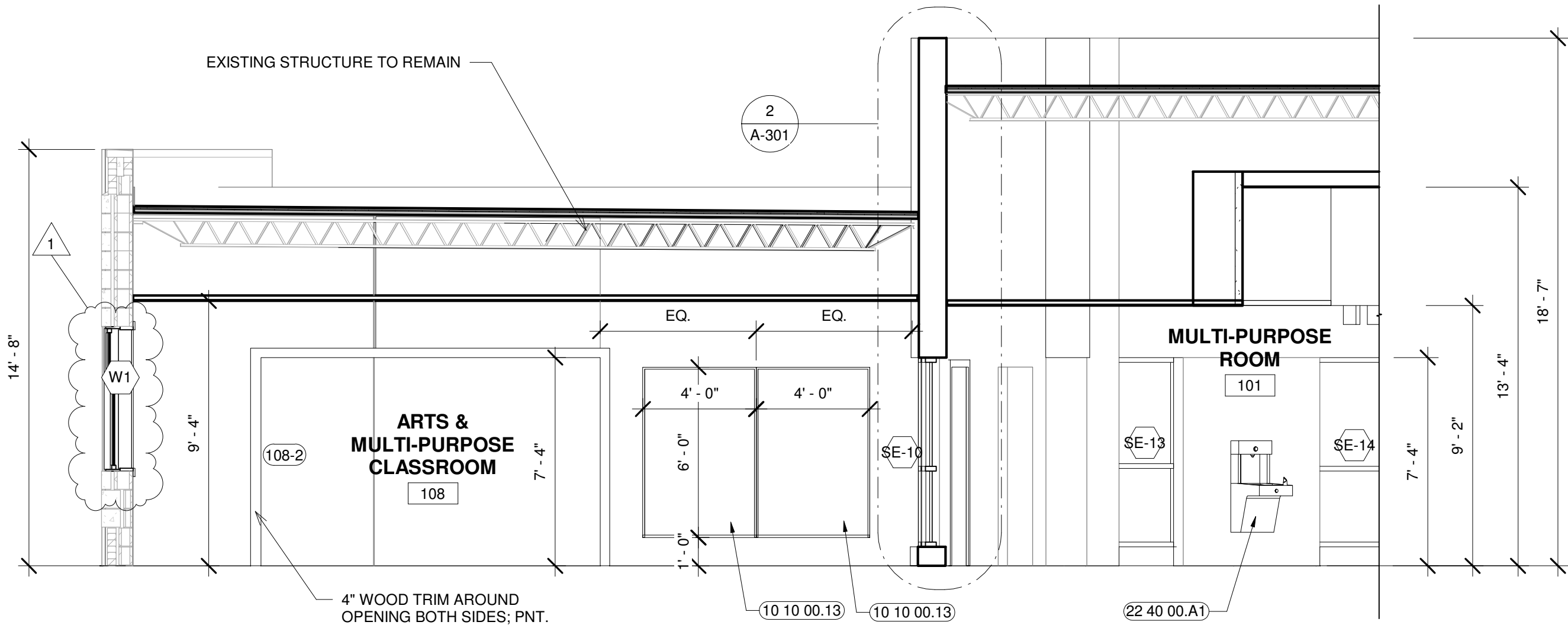
1 BUILDING SECTION 1  
1/4" = 1'-0"



2 BUILDING SECTION 2  
1/4" = 1'-0"



4 BUILDING SECTION 4  
1/4" = 1'-0"



3 BUILDING SECTION 3  
1/4" = 1'-0"

BALTIMORE CITY RECREATION & PARKS  
**MARY E. RODMAN RECREATION  
CENTER RENOVATION**  
3600 W Mulberry St, Baltimore, MD 21229

*Murphy & Dittenhafer*  
ARCHITECTS  
228 West Market Street, York, Pennsylvania 17401  
410-652-4823 voice 410-652-4874 fax 717-643-3449 fax

Mark	Date	Description
1	11/01/2021	ADDENDUM #3

Revision Schedule		
No.	Description	Date
1	Addendum #3	10/12/21

PROJECT NO: 20119  
DRAWN BY: AWO  
CHECKED BY: KSS

BUILDING  
SECTIONS

SHEET  
A-300

BALTIMORE CITY RECREATION & PARKS  
**MARY E. RODMAN RECREATION  
CENTER RENOVATION**  
3600 W Mulberry St, Baltimore, MD 21229

*Murphy & Dittenhafer*  
ARCHITECTS  
228 West Market Street, York, Pennsylvania 17401  
410-652-4823 voice 410-652-4874 fax

Mark	Date	Description
1	11/01/2021	ADDENDUM #3

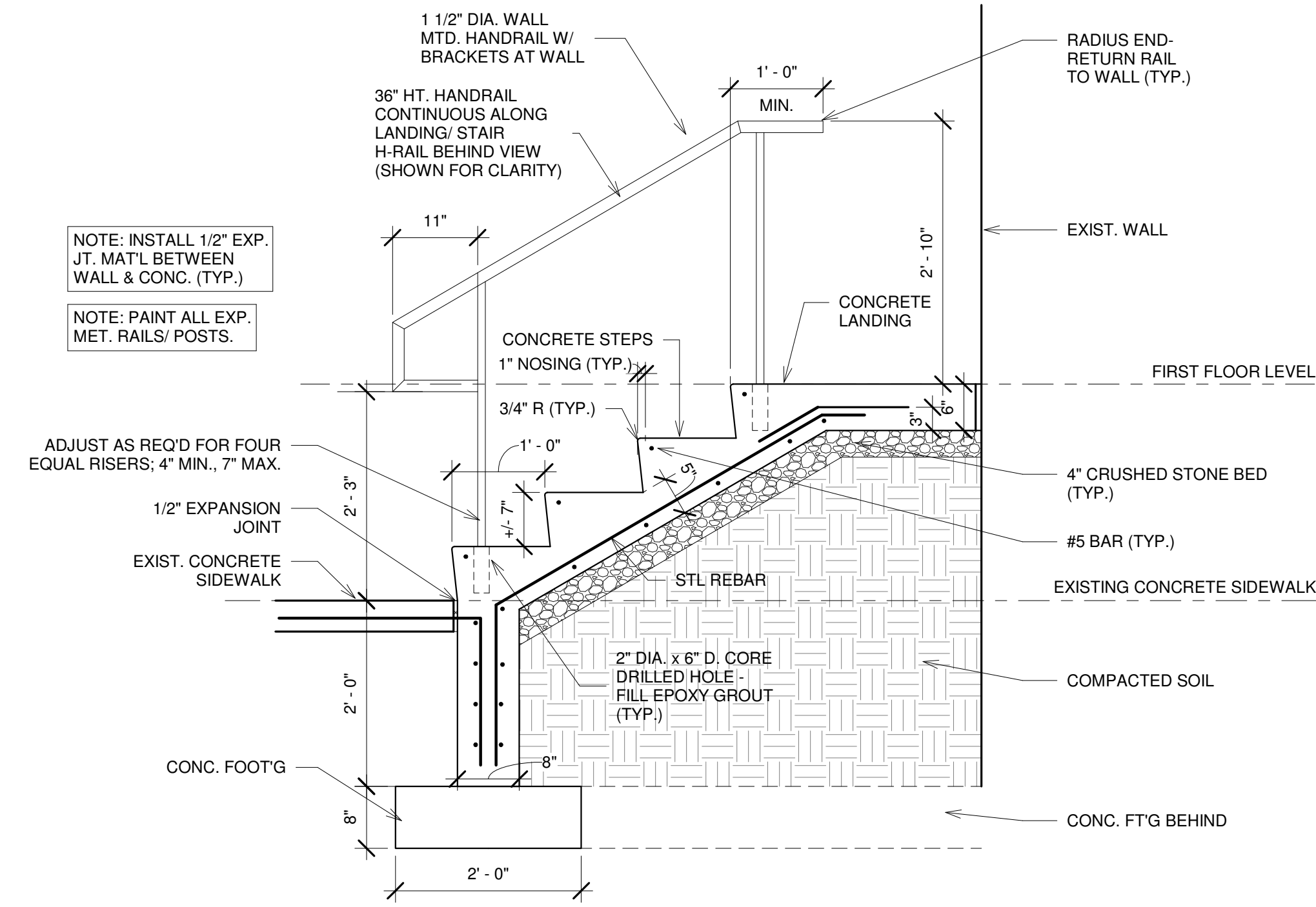
Revision Schedule		
No.	Description	Date
1	Addendum #3	10/12/21

PROJECT NO: 20119  
DRAWN BY: AWO  
CHECKED BY: KSS

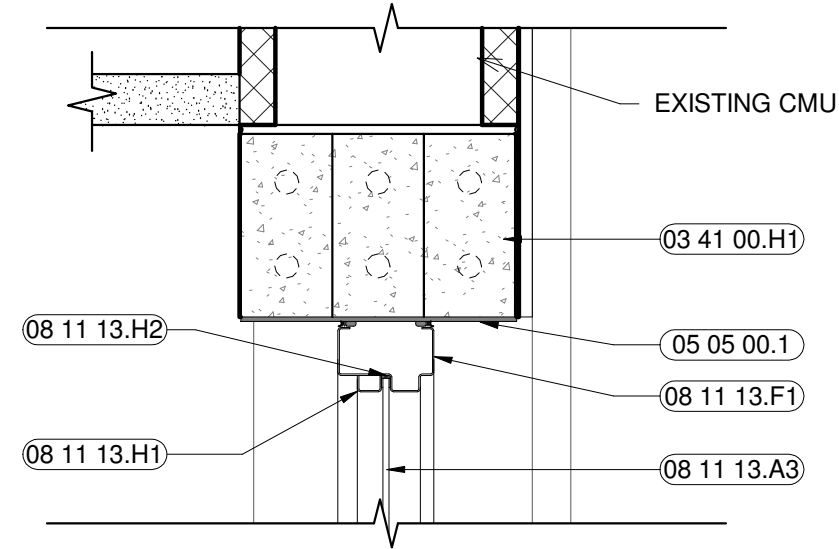
**WALL  
SECTIONS**

SHEET  
**A-301**

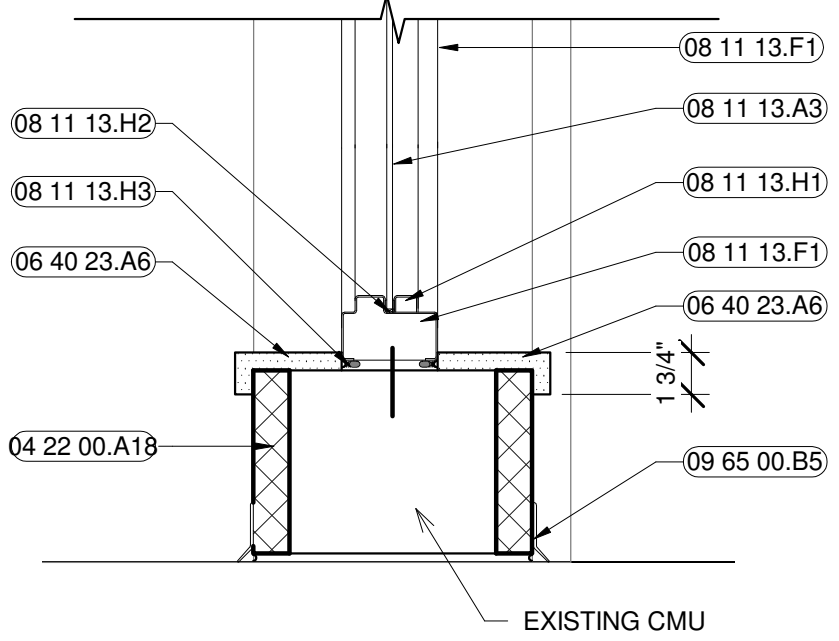
KEYNOTE LEGEND	
TAG	DESCRIPTION
03 41 00.H1	PRECAST CONCRETE LINTEL, SEE STRUCTURAL DWGS
04 22 00.A15	6" X 8" X 16" CMU - 2 CORE
04 22 00.A18	12" X 8" X 16" CMU - 2 CORE
05 05 00.1	STEEL LINTEL - SEE STRUCTURAL DWGS
06 40 23.A6	SOLID SURFACE SILL
07 21 00.B1	6" RIGID INSULATION (R-30)
08 11 13.A3	FIXED GLASS CENTERED IN HOLLOW METAL FRAME
08 11 13.F1	4" HM MULLION
08 11 13.H1	GLAZING BEAD
08 11 13.H2	GLAZING TAPE
08 11 13.H3	1/4" JOINT SEALANT AND BACKER ROD
09 51 23.A1	2X4 (24" X 48") LAY-IN ACOUSTICAL TILE CEILING
09 65 00.B5	4" RESILIENT TOPSET BASE THROUGHOUT ROOM



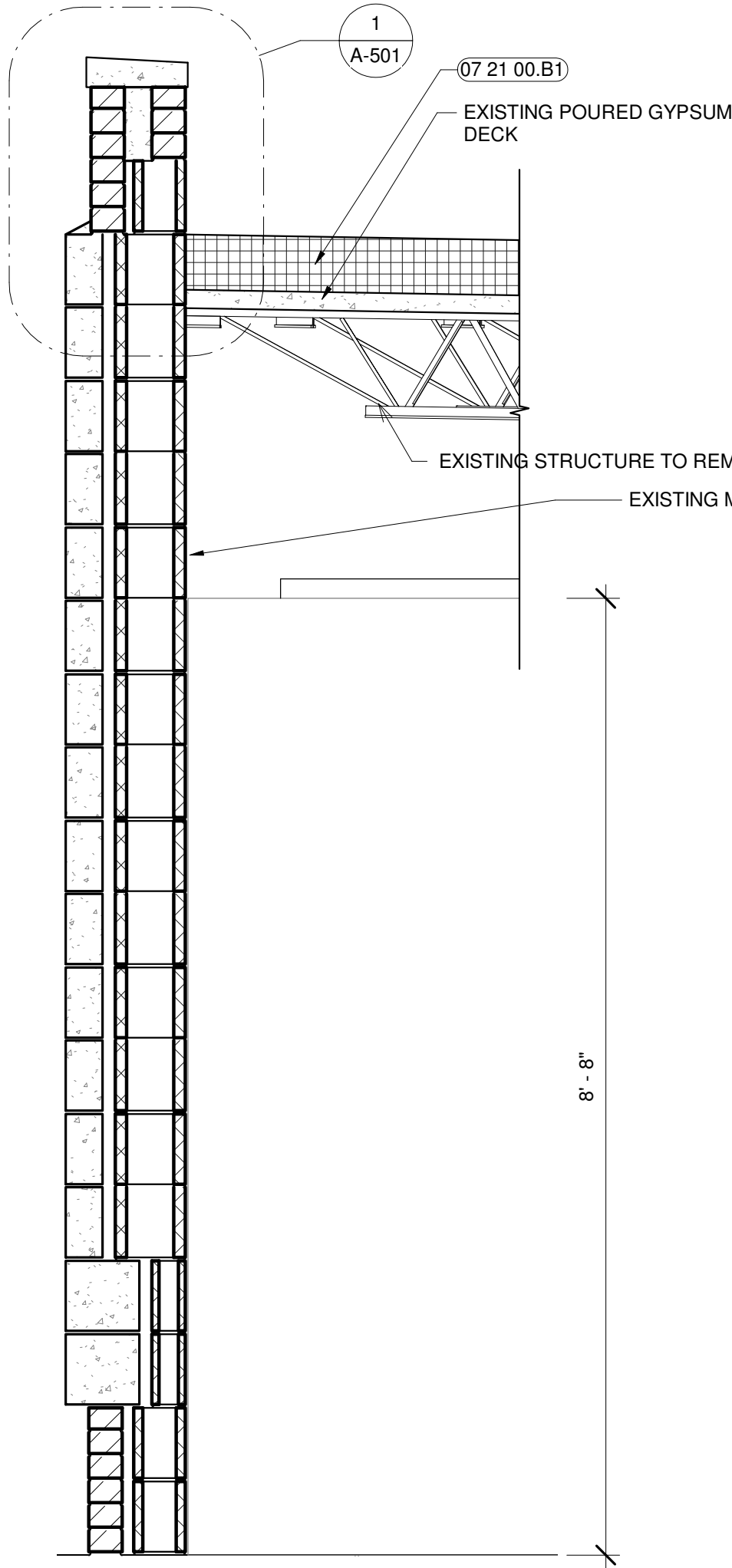
9 CONCRETE STAIR DETAIL  
3/4" = 1'-0"



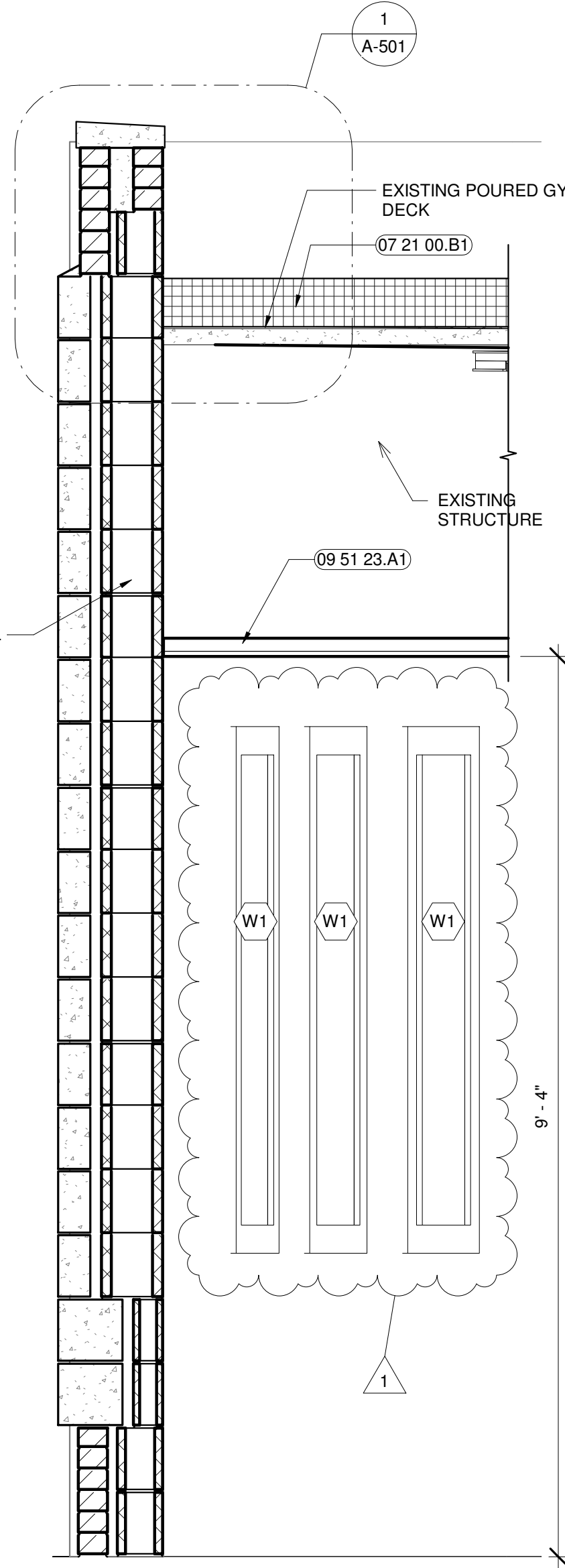
6 WALL SECTION 4 - Callout 2  
1 1/2" = 1'-0"



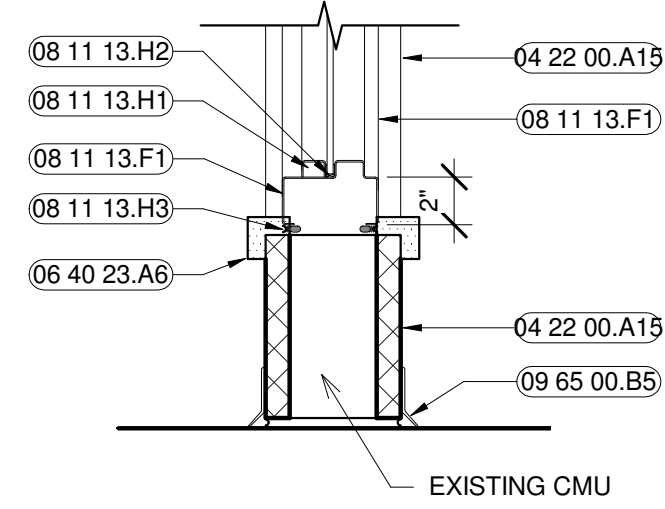
5 WALL SECTION 4 - Callout 1  
1 1/2" = 1'-0"



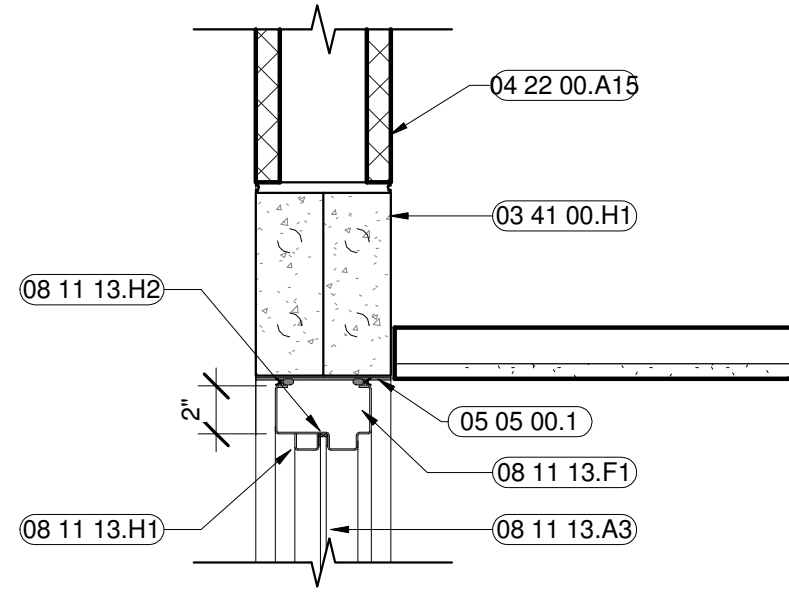
4 WALL SECTION 2  
3/4" = 1'-0"



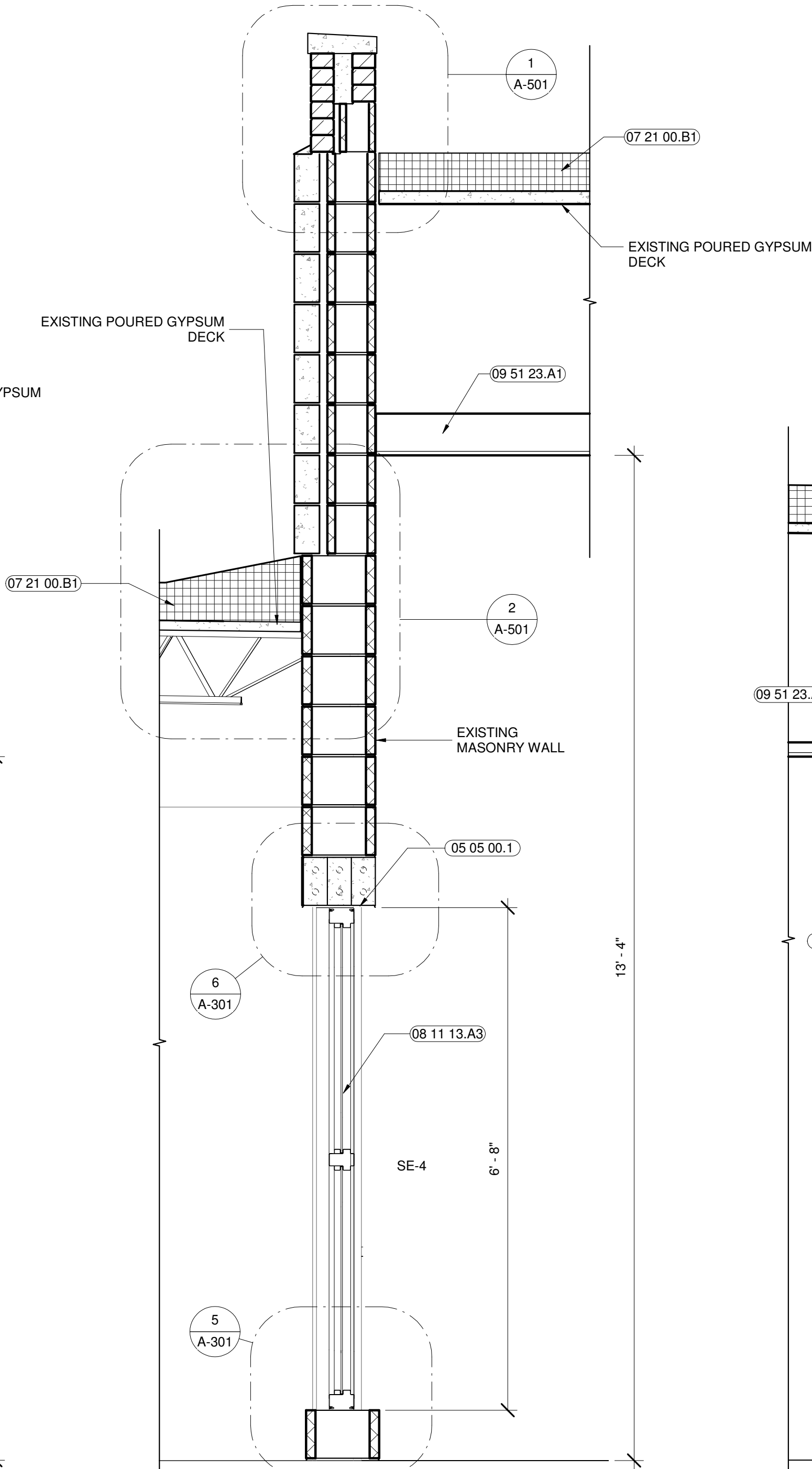
3 WALL SECTION 1  
3/4" = 1'-0"



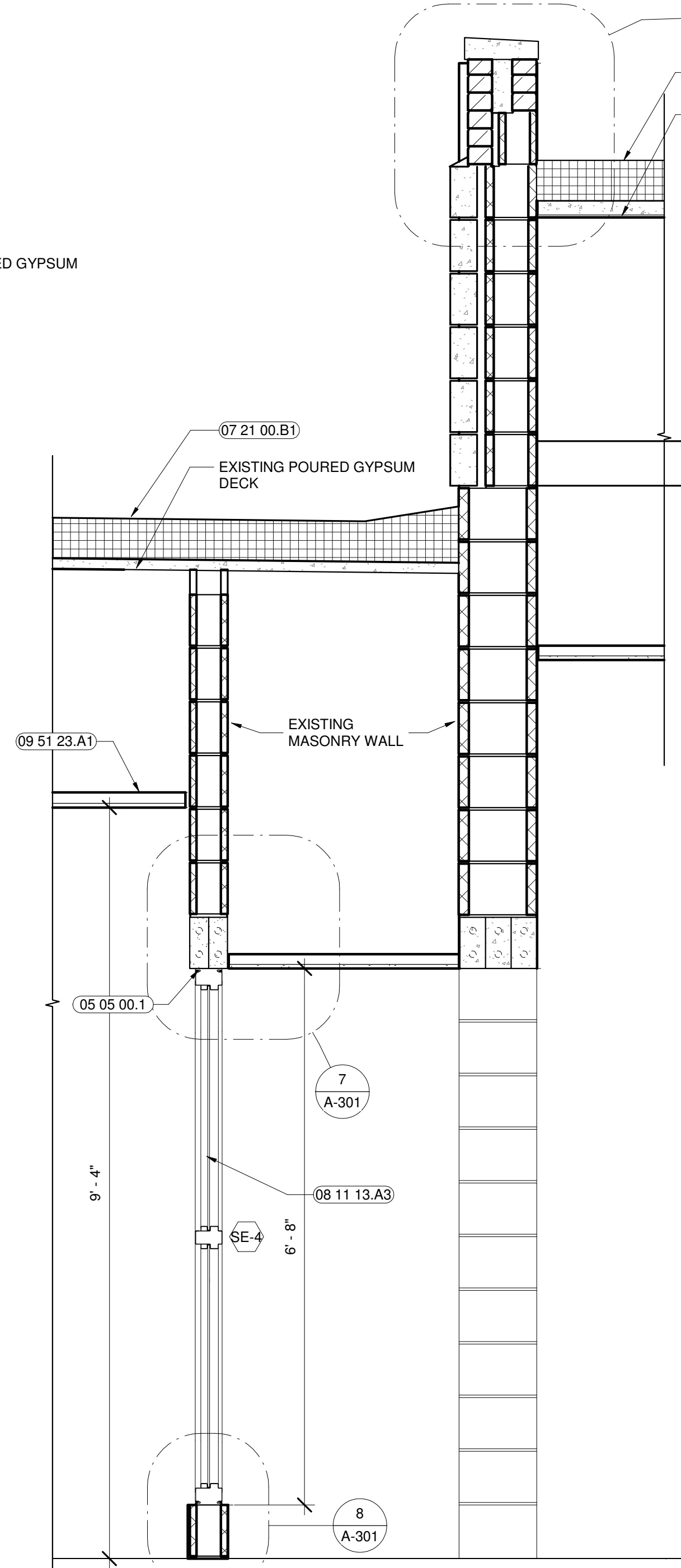
8 WALL SECTION 3 - Callout 2  
1 1/2" = 1'-0"



7 WALL SECTION 3 - Callout 1  
1 1/2" = 1'-0"

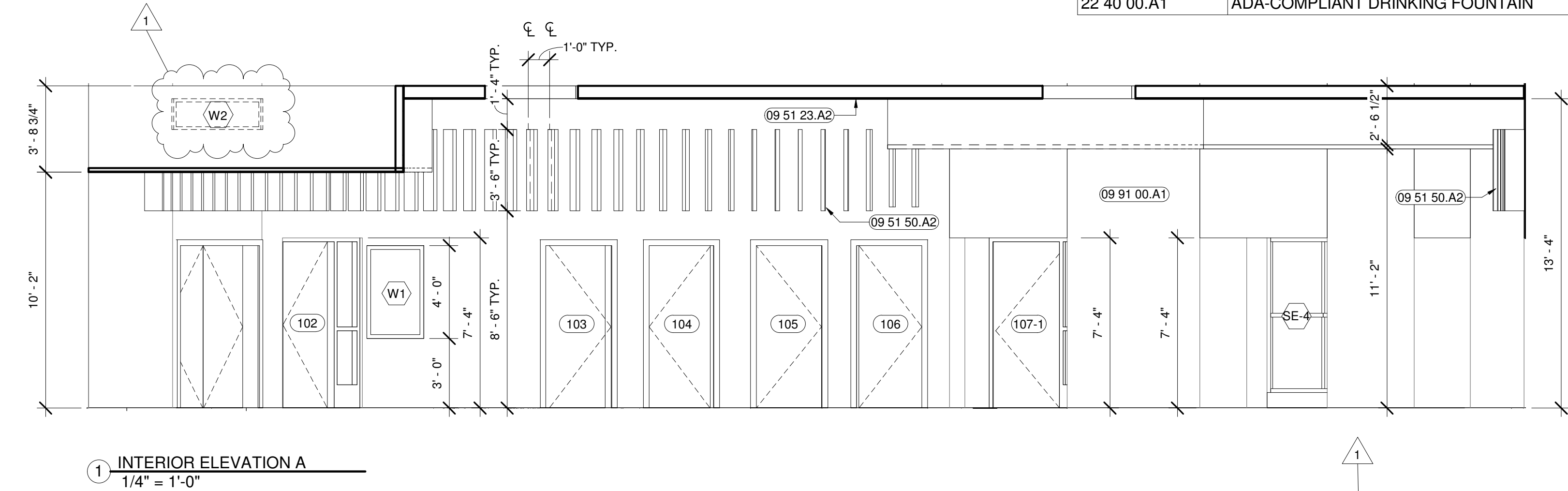


2 WALL SECTION 4  
3/4" = 1'-0"

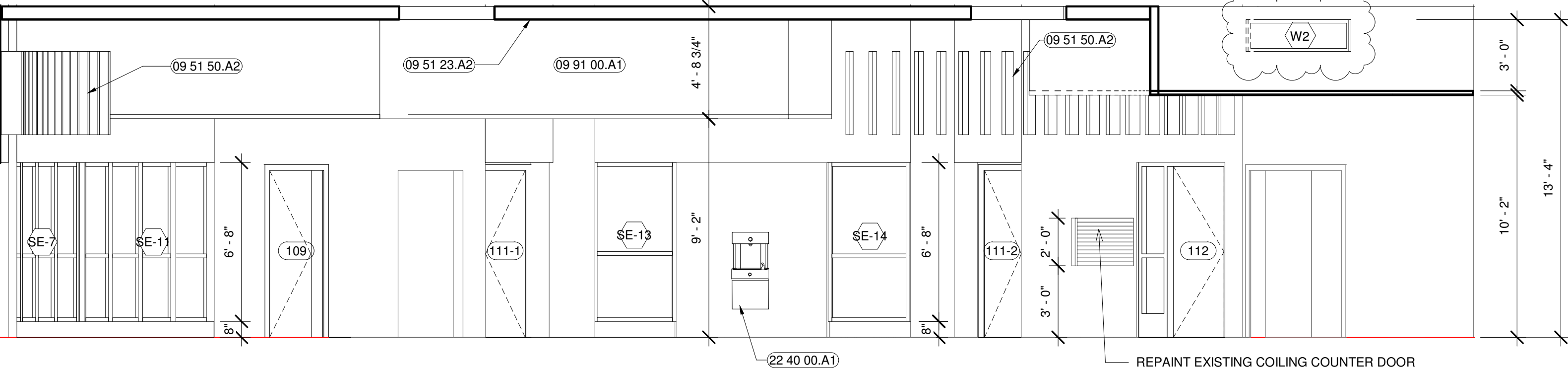


1 WALL SECTION 3  
3/4" = 1'-0"

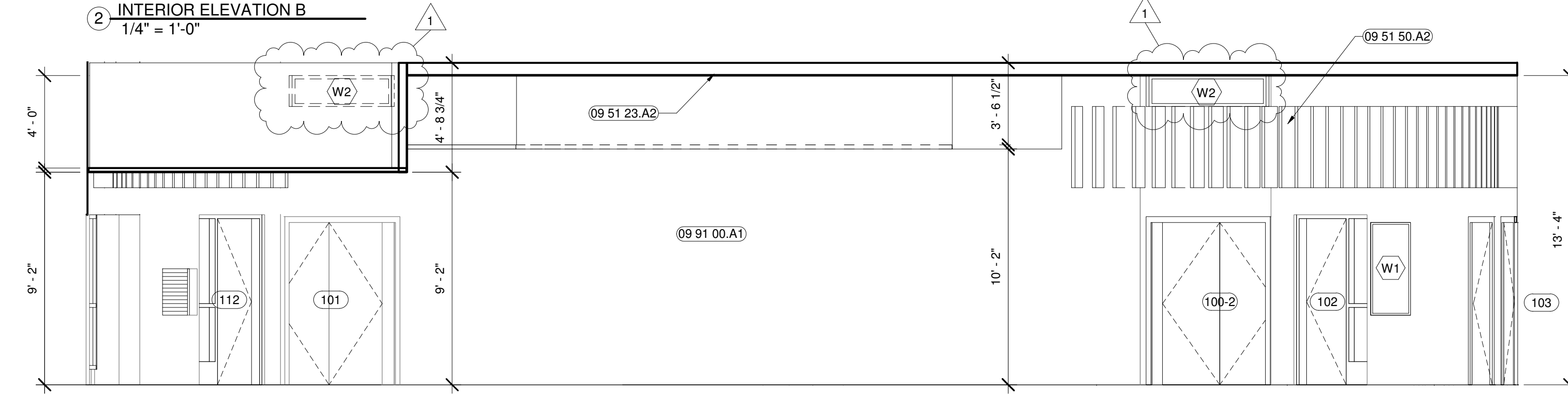
KEYNOTE LEGEND	
TAG	DESCRIPTION
09 51 23.A2	2X2 (24" X 24") LAY-IN ACOUSTICAL TILE CEILING
09 51 50.A2	ACOUSTIC WALL BLADES
09 91 00.A1	PAINT FINISH
22 40 00.A1	ADA-COMPLIANT DRINKING FOUNTAIN



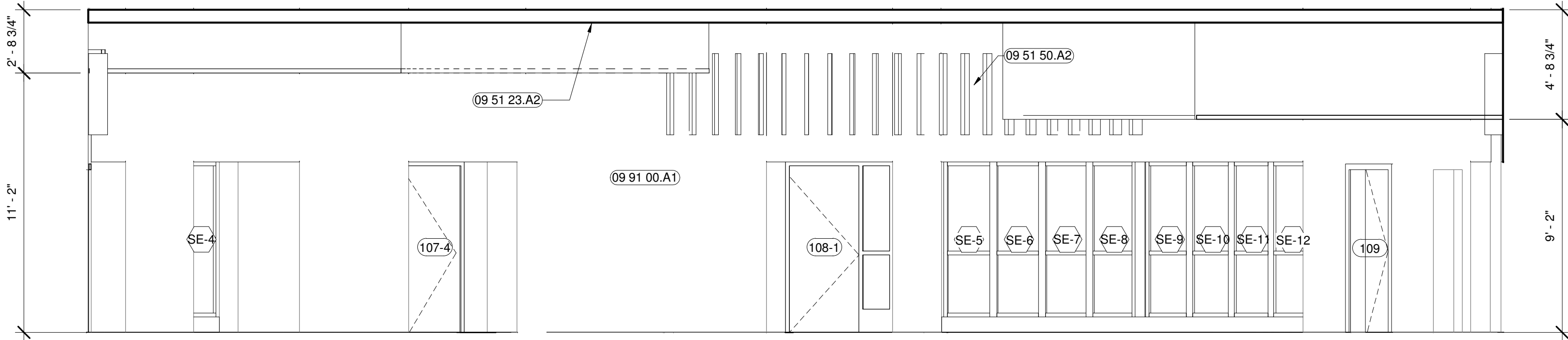
1 INTERIOR ELEVATION A  
1/4" = 1'-0"



2 INTERIOR ELEVATION B  
1/4" = 1'-0"



4 INTERIOR ELEVATION C  
1/4" = 1'-0"



3 INTERIOR ELEVATION D  
1/4" = 1'-0"

BALTIMORE CITY RECREATION & PARKS  
MARY E. RODMAN RECREATION  
CENTER RENOVATION  
3600 W Mulberry St, Baltimore, MD 21229

*Murphy & Dittenhafer*  
ARCHITECTS  
228 West Market Street, York, Pennsylvania 17401  
717-545-5627 voice 717-543-3449 fax  
805 North Charles Street, Baltimore, Maryland 21201  
410-625-4823 voice 410-625-4974 fax

Mark	Date	Description
1	11/01/2021	ADDENDUM #3

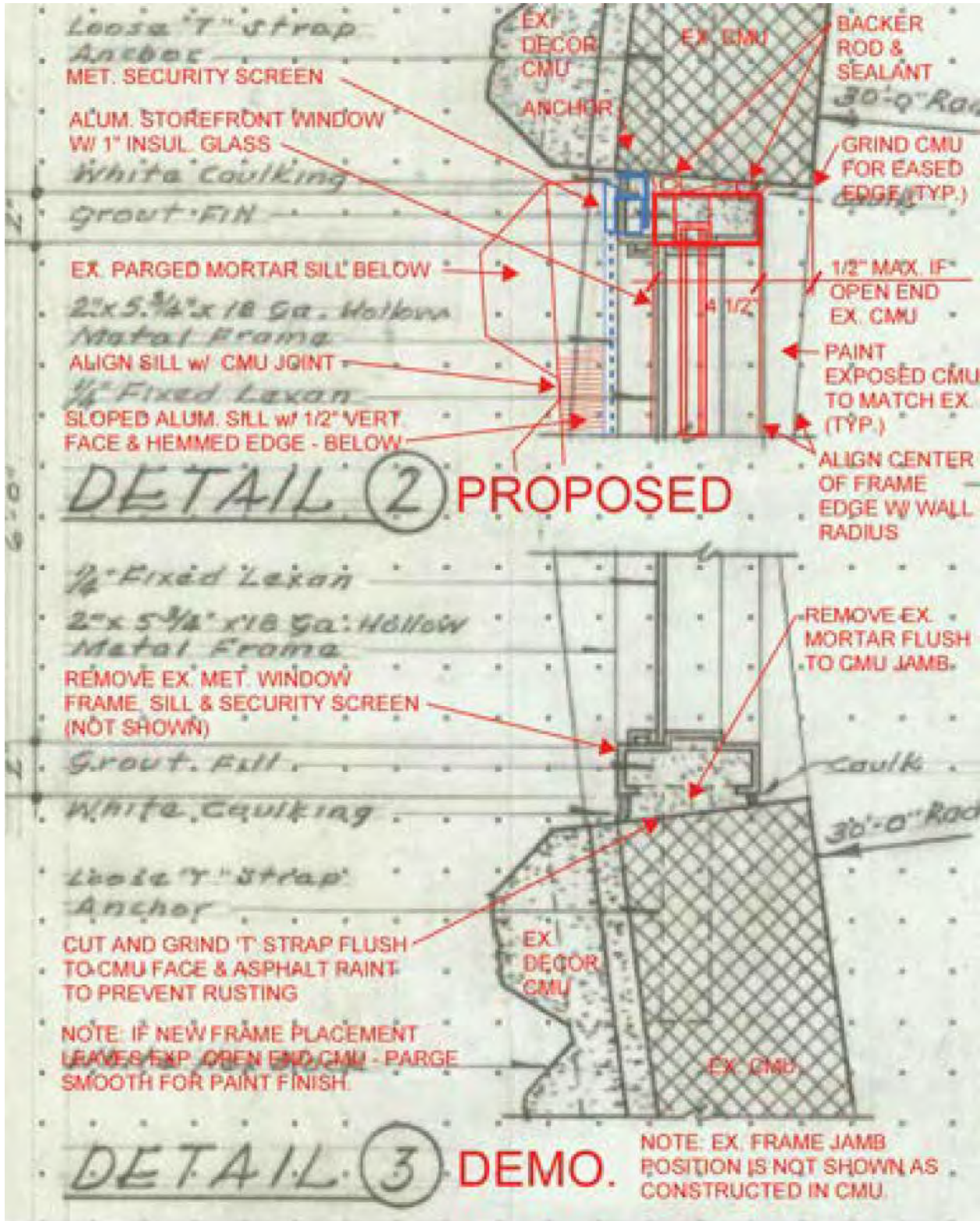
Revision Schedule		
No.	Description	Date
1	Addendum #3	10/12/21

PROJECT NO: 20119  
DRAWN BY: AWO  
CHECKED BY: KSS

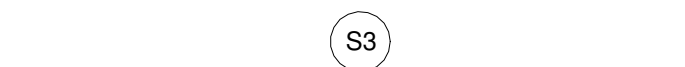
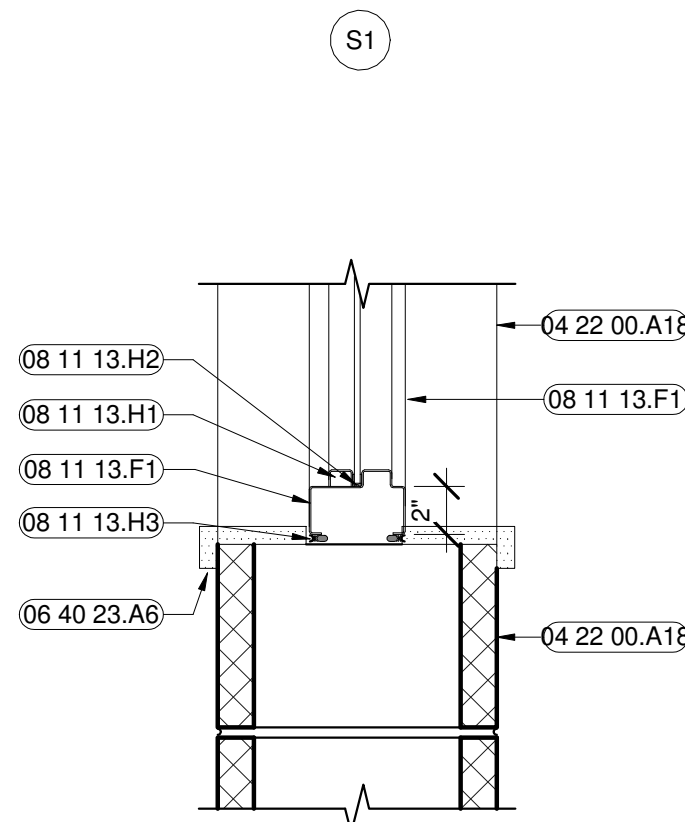
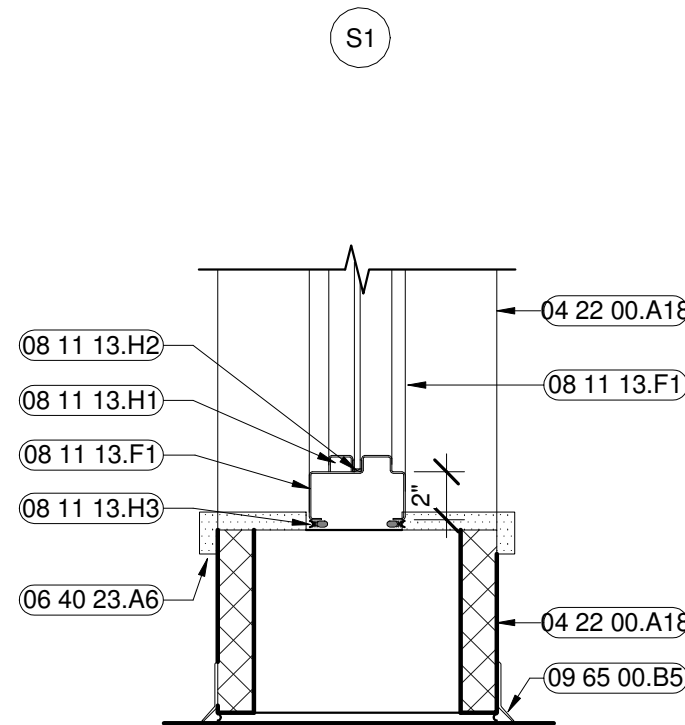
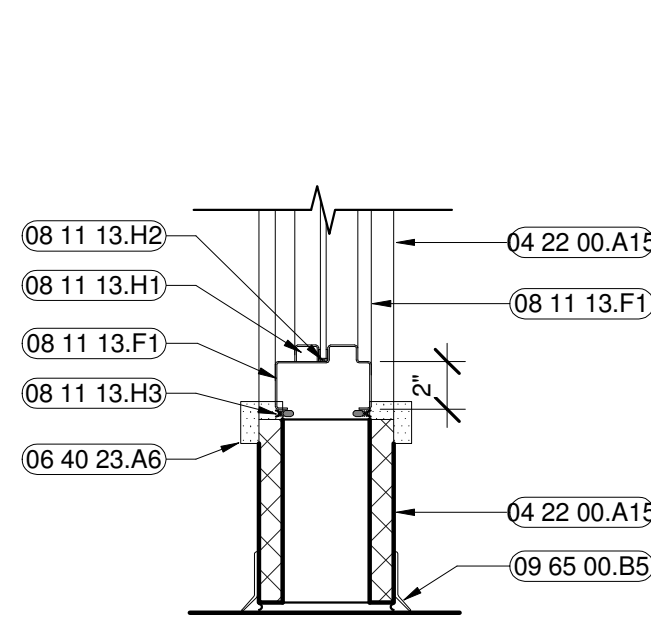
INTERIOR  
ELEVATIONS  
MULTI-PURPOSE  
ROOM  
A-400



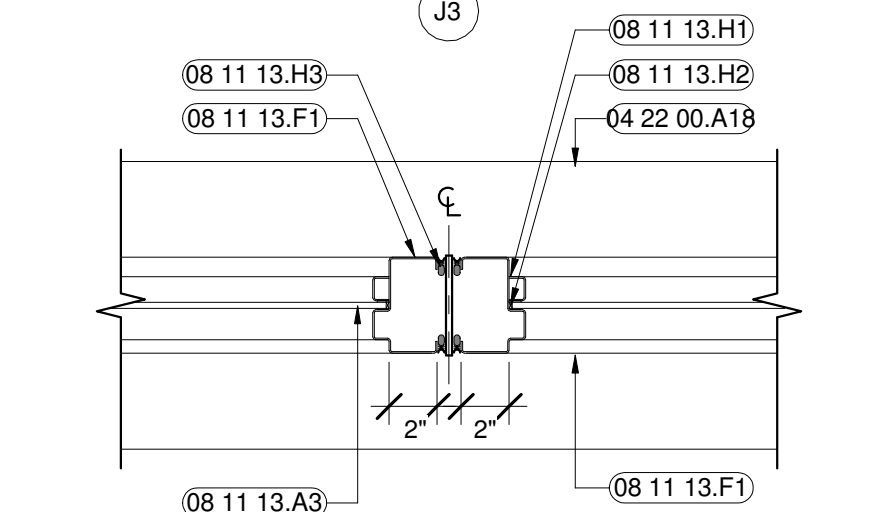
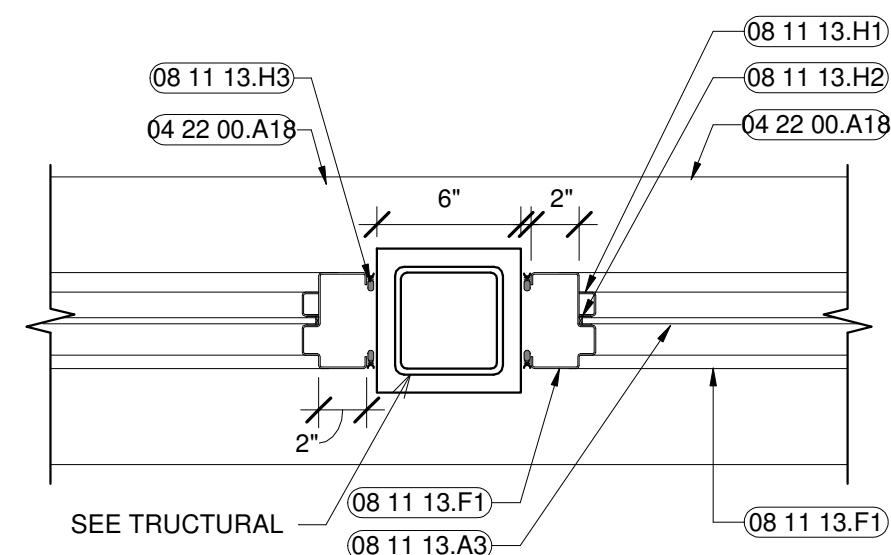
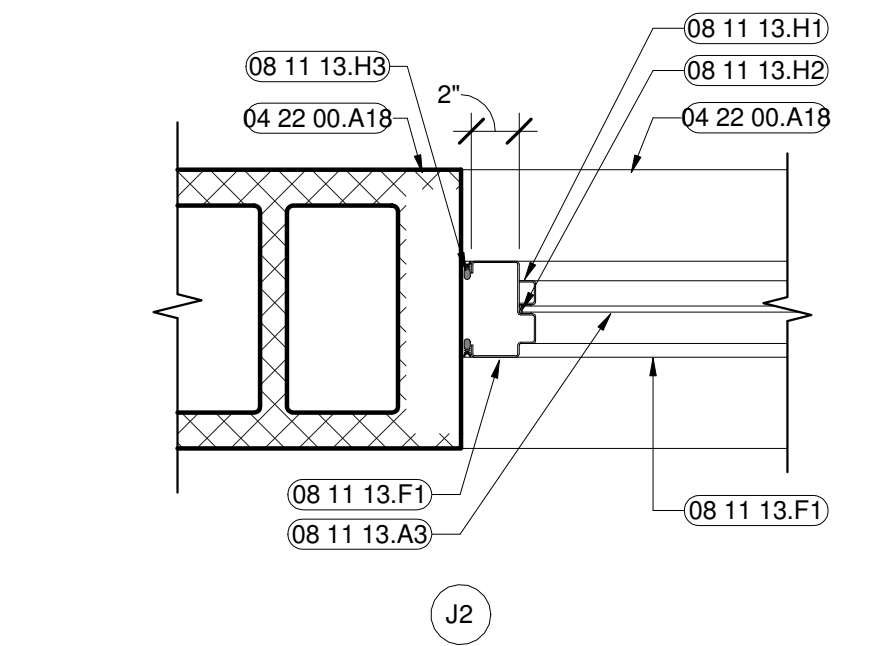
KEYNOTE LEGEND	
TAG	DESCRIPTION
08 11 13.F1	4" HM MULLION
08 11 13.H1	GLAZING BEAD
08 11 13.H2	GLAZING TAPE
08 11 13.H3	1/4" JOINT SEALANT AND BACKER ROD
09 65 00.B5	4" RESILIENT TOPSET BASE THROUGHOUT ROOM



Replacement Windows  
1/4" = 1'-0"



Technical drawing of a cross-section of a mechanical assembly, labeled J1. The drawing shows a central rectangular component with a cross-hatched pattern, surrounded by a frame. Various parts are labeled with codes: 08 11 13.H3, 08 11 13.H2, 08 11 13.F1, 08 11 13.A3, 04 22 00.A15, and 08 11 13.F1. A dimension of 2 inches is indicated for a specific part of the assembly.



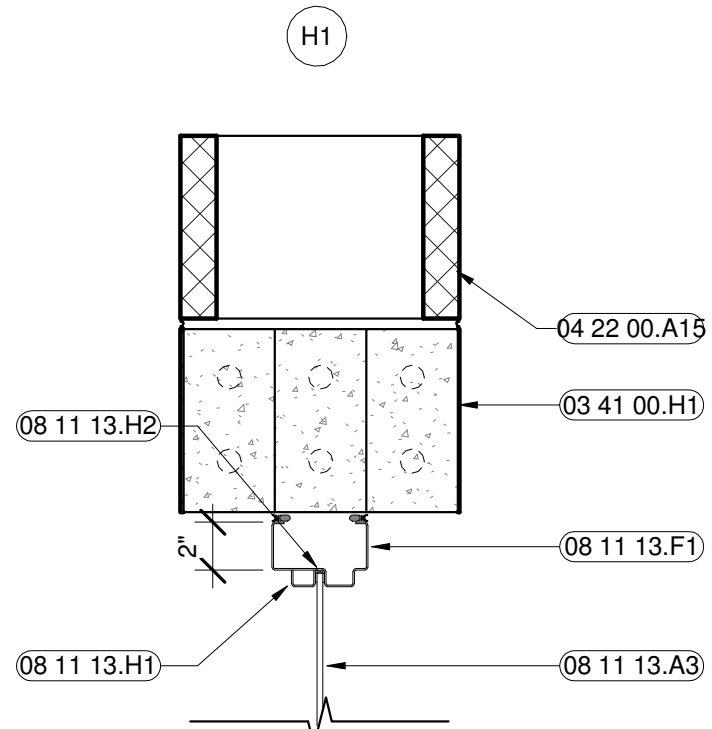
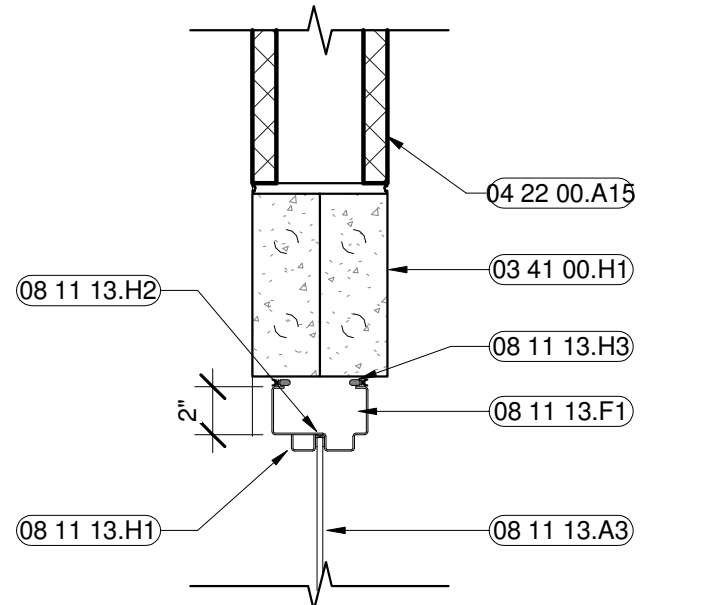
The image contains two technical drawings of window units, labeled SE-13 and SE-14. Each drawing shows a side view of the unit with various dimensions and internal components labeled.

**SE-13 Dimensions:**

- Overall width: 3' - 7"
- Top section width: 3' - 3"
- Top section height: 2'
- Bottom section height: 2' - 6"
- Overall height: 7' - 4"
- Internal components: H2, J2, S2

**SE-14 Dimensions:**

- Overall width: 3' - 7"
- Top section width: 3' - 3"
- Top section height: 2'
- Bottom section height: 2' - 6"
- Overall height: 7' - 4"
- Internal components: H2, J2, S2



### HEAD DETAILS - HOLLOW METAL STOREFRONT

The image contains two elevation drawings of a building facade, labeled SE-1 and SE-2. Both drawings show a section of the building with a central entrance and windows. The left drawing (SE-1) shows a central double door (5) with a diamond-shaped glass pattern, flanked by windows (8) and (6). The right drawing (SE-2) shows a central window (7) flanked by a door (6) and a window (4). Both drawings include detailed dimensions for height and width, and a 'FLOOR LINE' is indicated at the bottom.

**SE-1 Dimensions:**

- Overall width: 12' - 8"
- Overall height: 9' - 6"
- Top horizontal dimensions (from left to right): 2", 2' - 7 1/2", 4 1/4", 6' - 0", 4 1/4", 2' - 8 1/4", 2", 3 3/4"
- Vertical dimensions (from bottom to top): 4", 2' - 11", 2", 3' - 7", 2', 2', 2', 2', 2'
- Labels: 4, 5, 6, 8

**SE-2 Dimensions:**

- Overall width: 9' - 6 3/4"
- Overall height: 9' - 6"
- Top horizontal dimensions (from left to right): 4 1/4", 2", 2' - 9 3/4", 2", 2' - 10 3/4", 2", 2' - 9 3/4", 2"
- Vertical dimensions (from bottom to top): 4", 2' - 11", 2", 3' - 7", 2', 2', 2', 2', 2'
- Labels: 4, 5, 6, 7

**FLOOR LINE:** Indicated by a dashed line at the bottom of both drawings.

BALTIMORE CITY RECREATION & PARKS  
**MARY E. RODMAN RECREATION  
CENTER RENOVATION**  
3600 W Mulberry St, Baltimore, MD 21229

**Murphy & Dittenhafer**

Mark	Date	Description
1	11/01/2021	ADDENDUM #3

Revision Schedule		
No.	Description	Date
1	Addendum #3	10/12/2

PROJECT NO:	2011
DRAWN BY:	AW
CHECKED BY:	KS

HOLLOW  
METAL &  
STOREFRONT

SHEET  
A-602