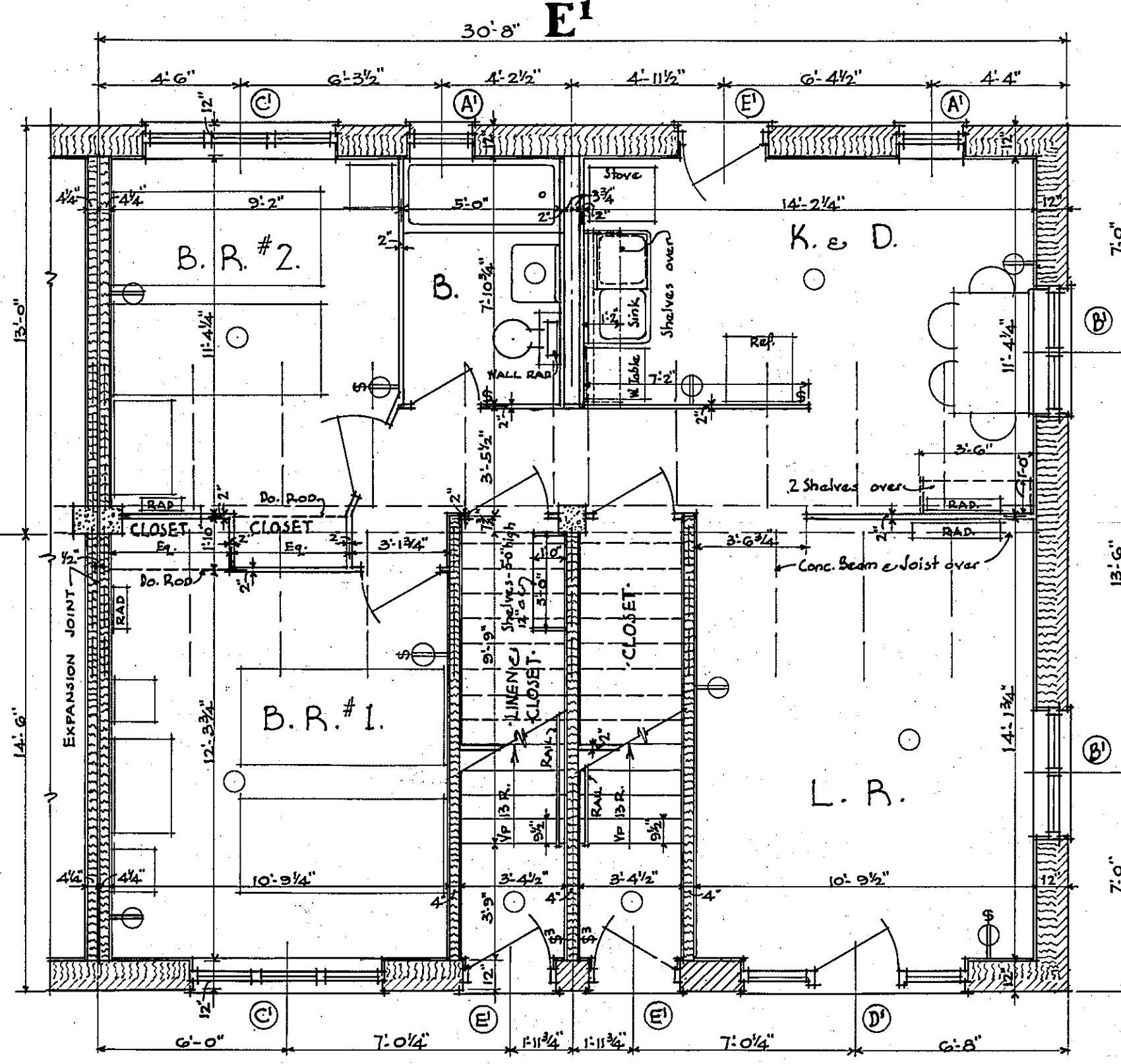
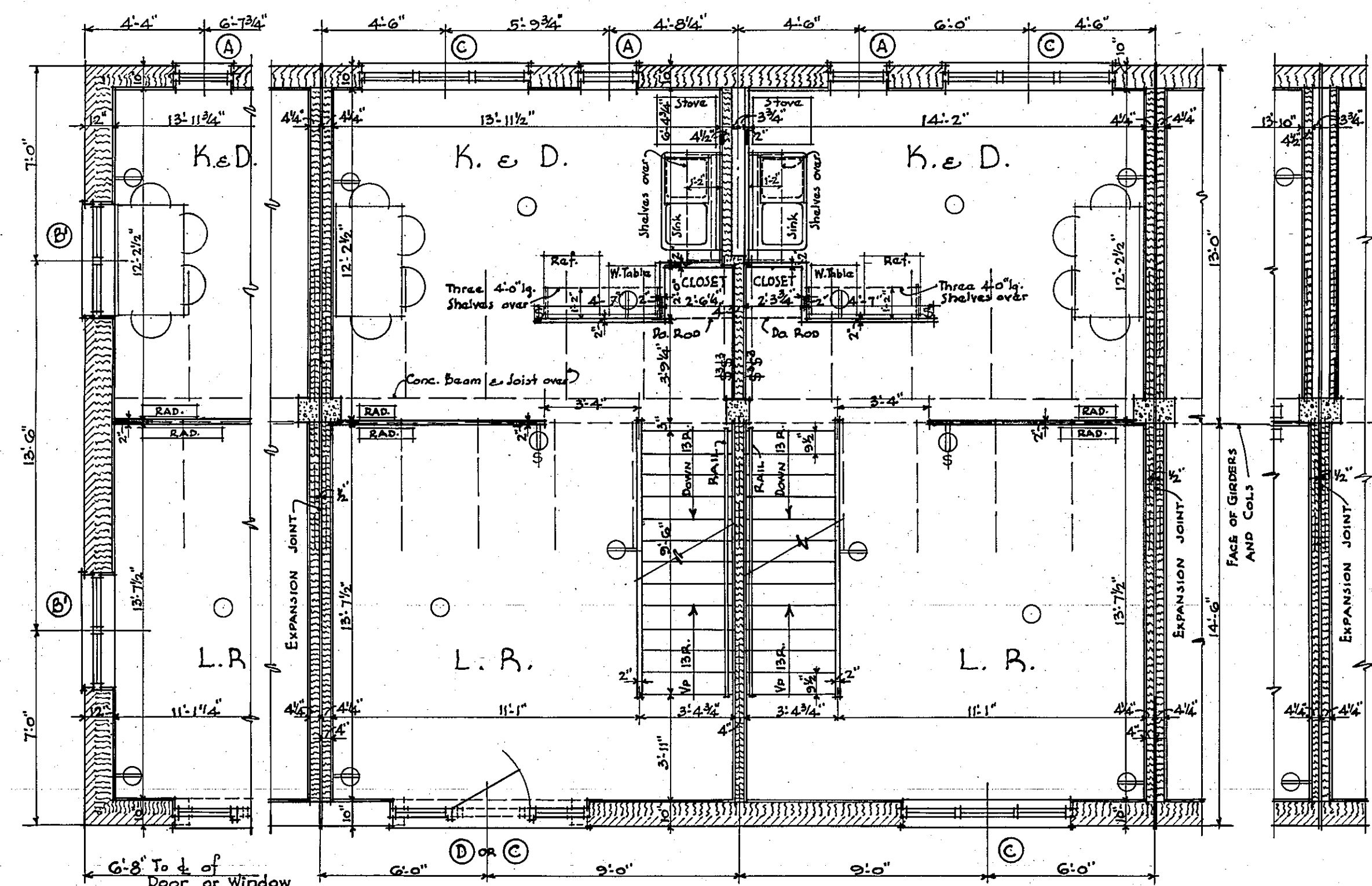


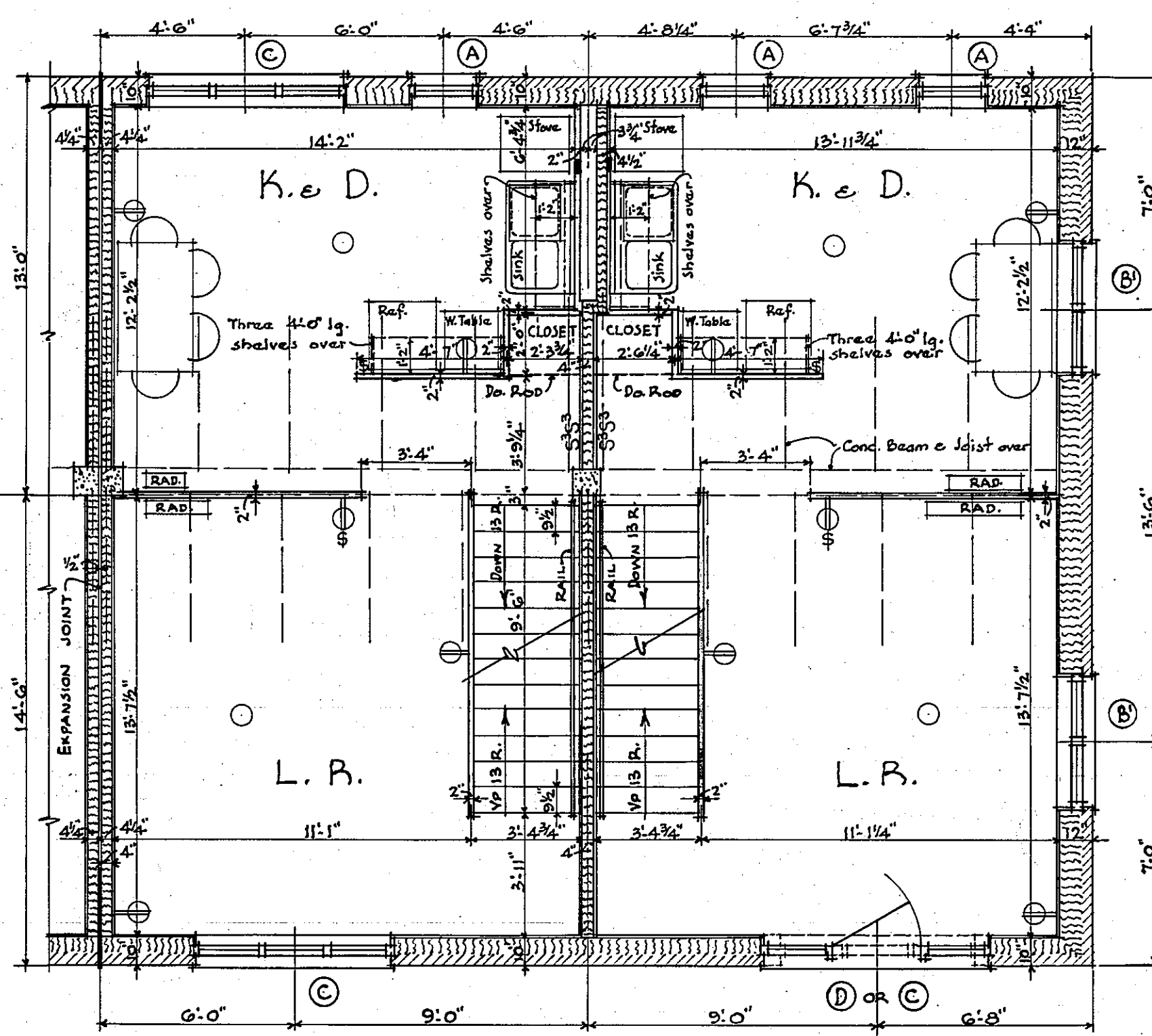
FIRST FLOOR PLAN



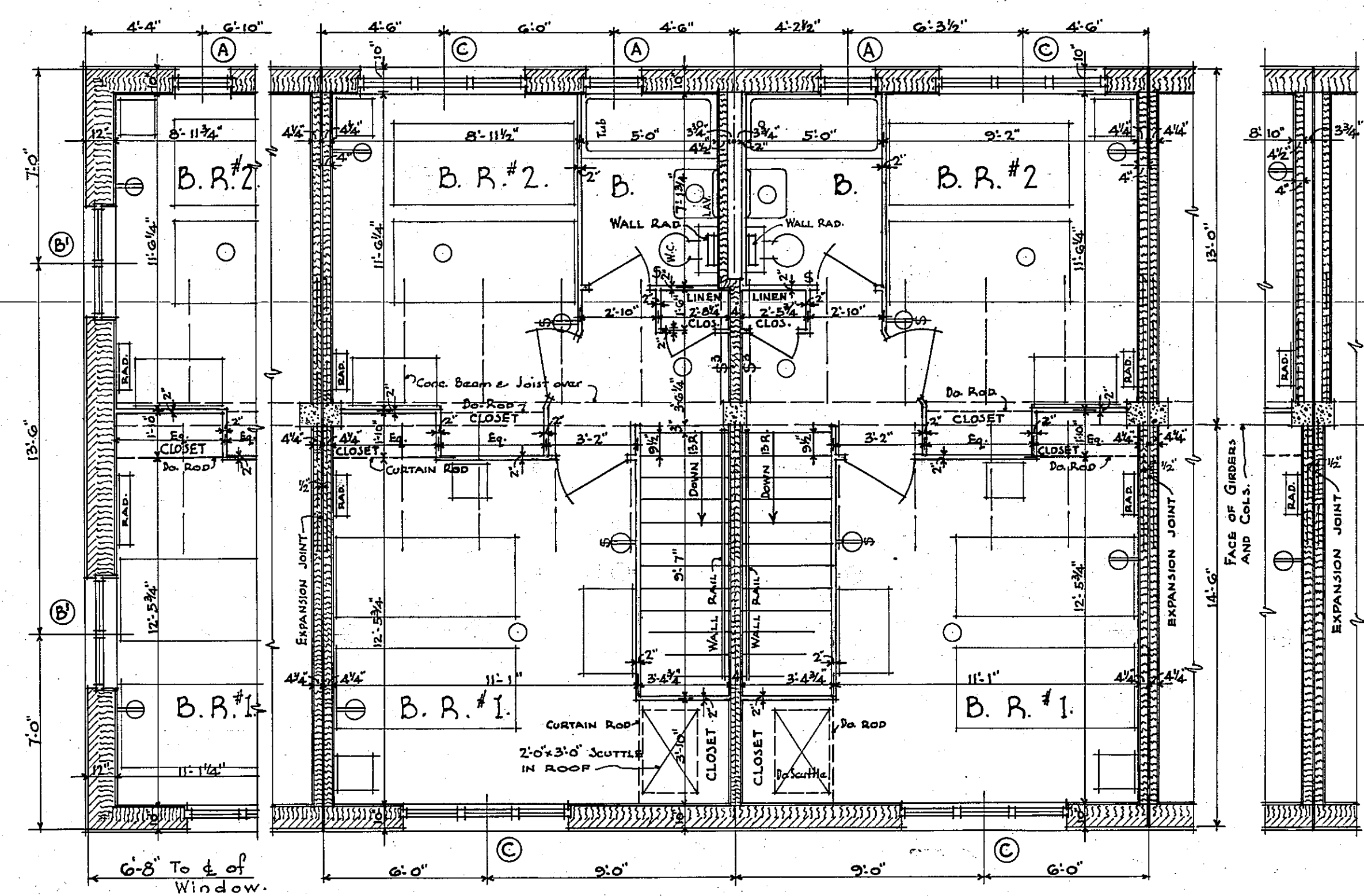
FIRST FLOOR PLAN



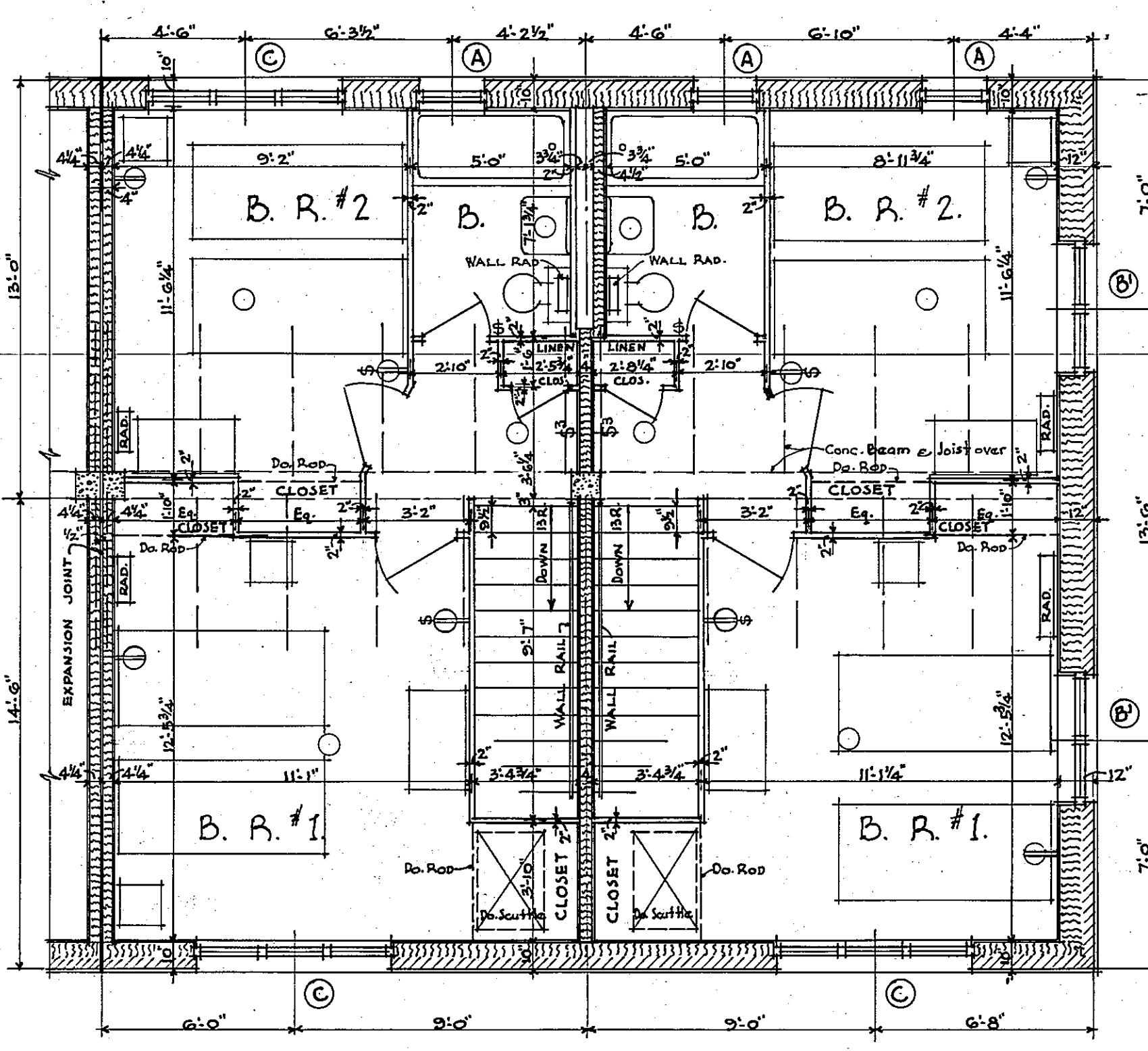
SECOND FLOOR PLAN



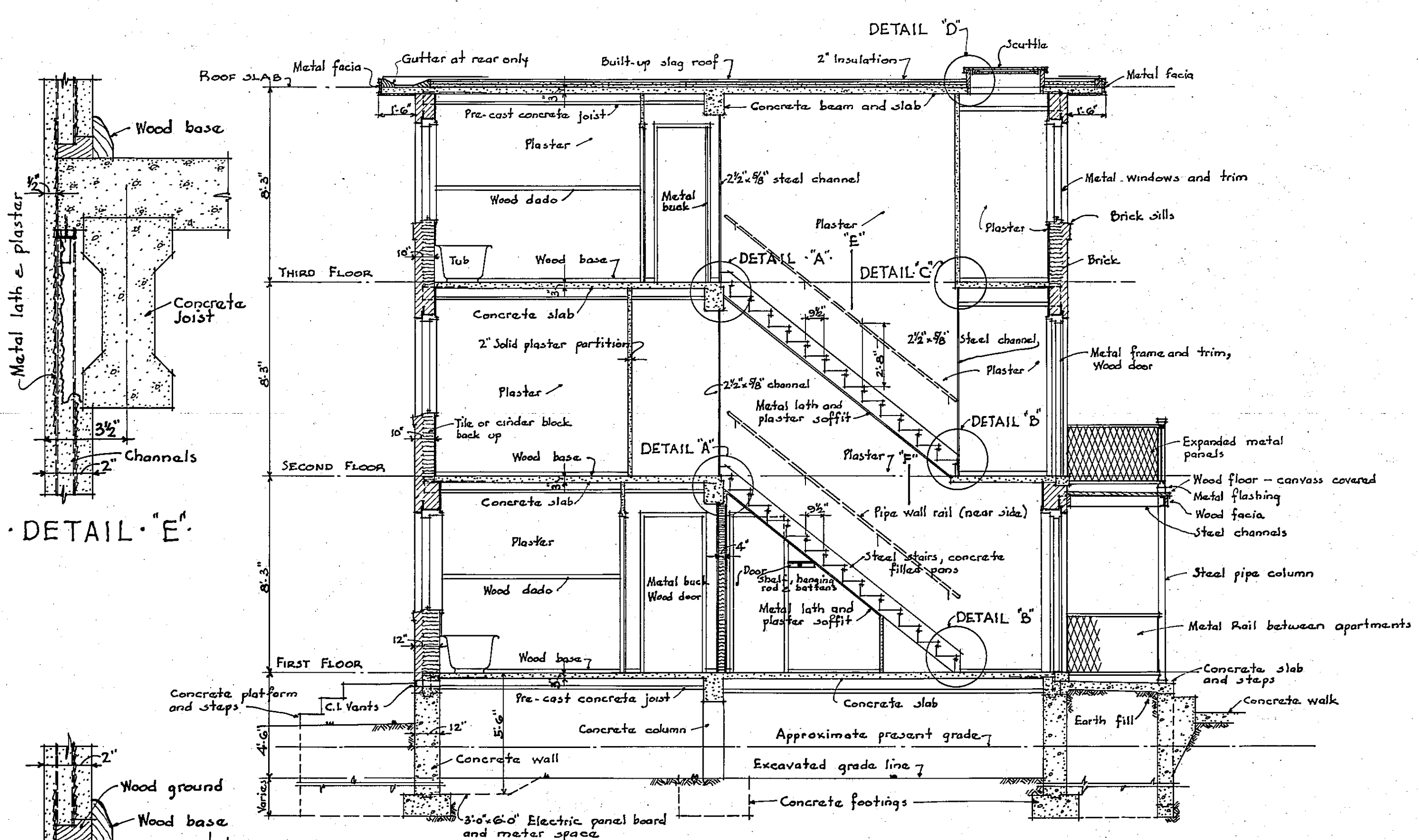
SECOND FLOOR PLAN



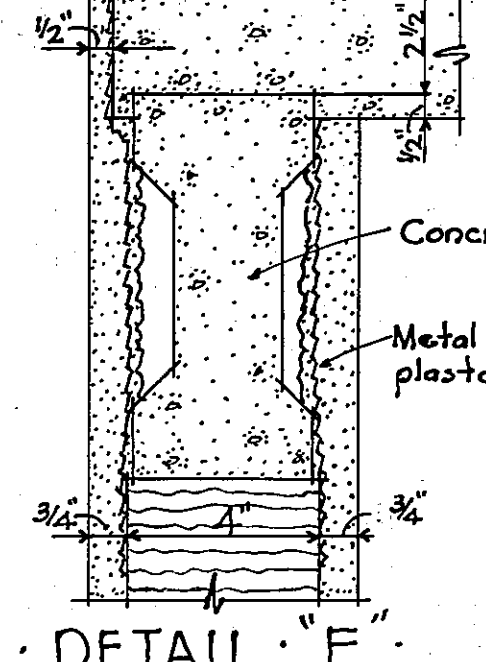
THIRD FLOOR PLAN



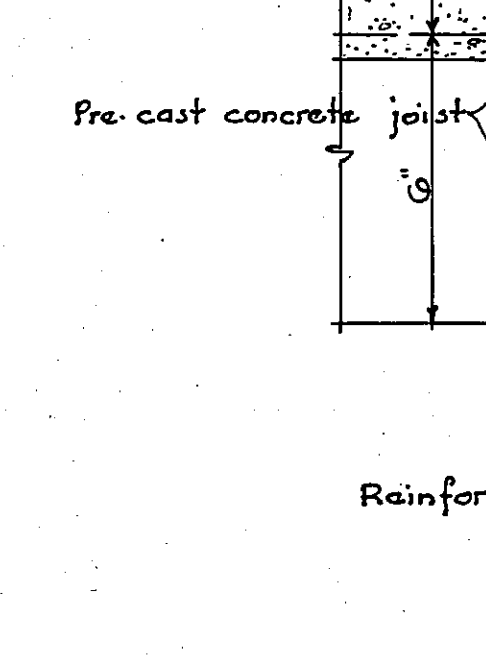
THIRD FLOOR PLAN



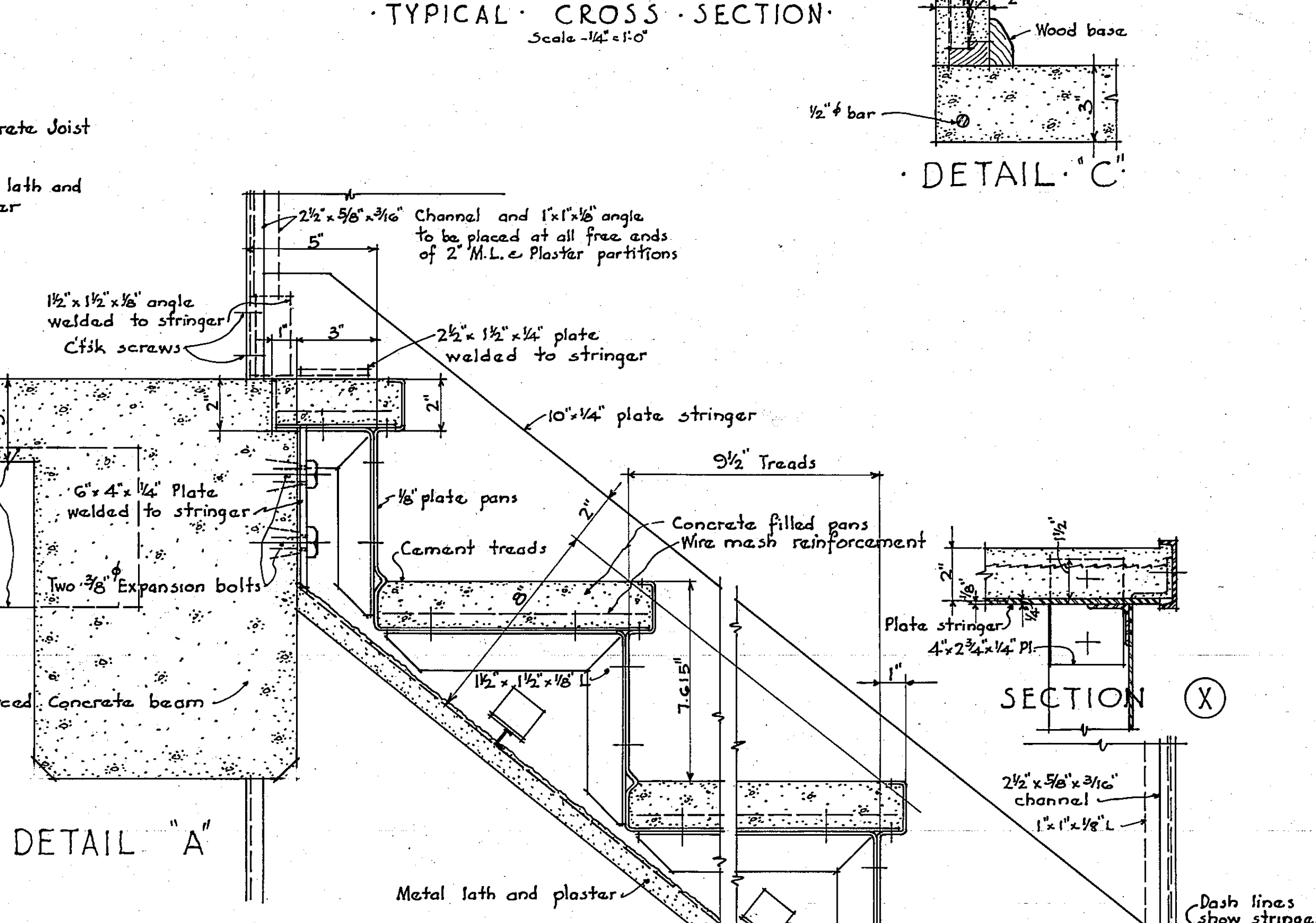
TYPICAL CROSS SECTION



DETAIL E

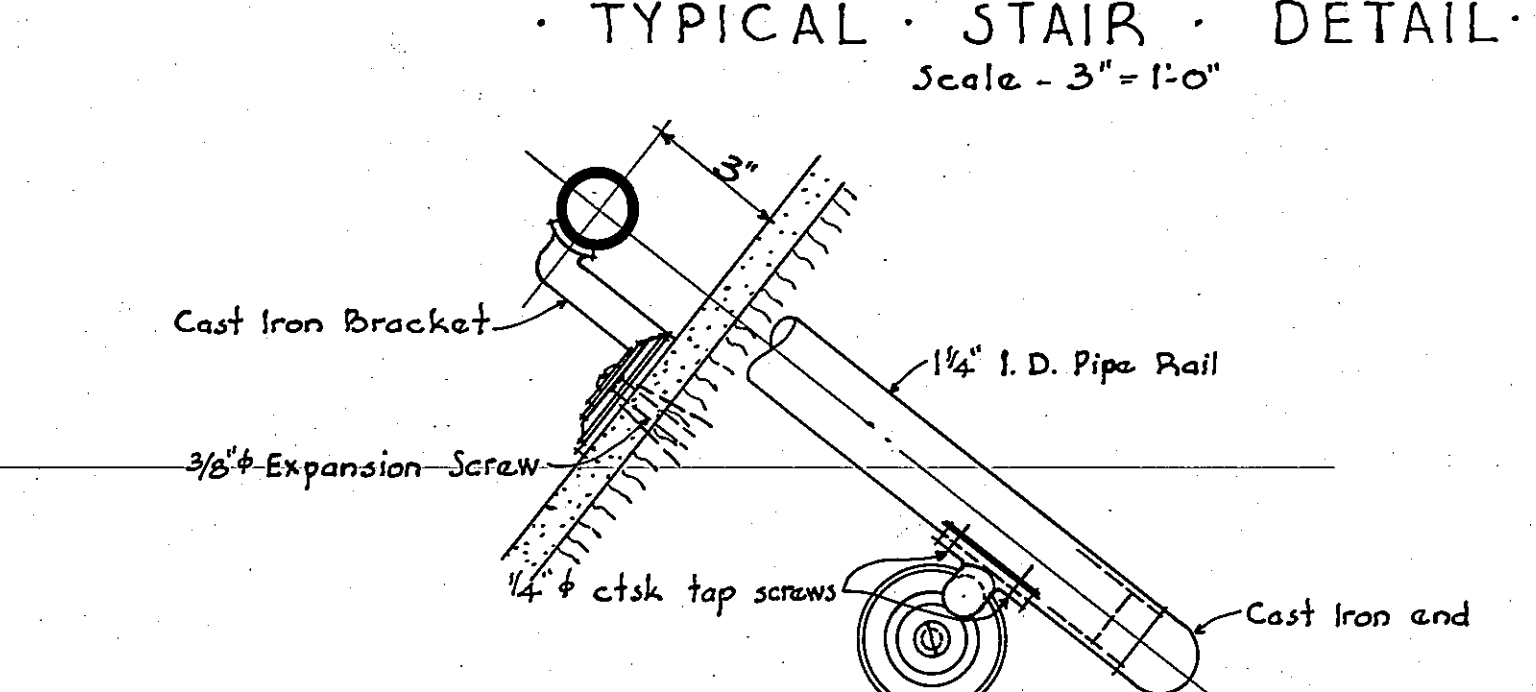


DETAIL F



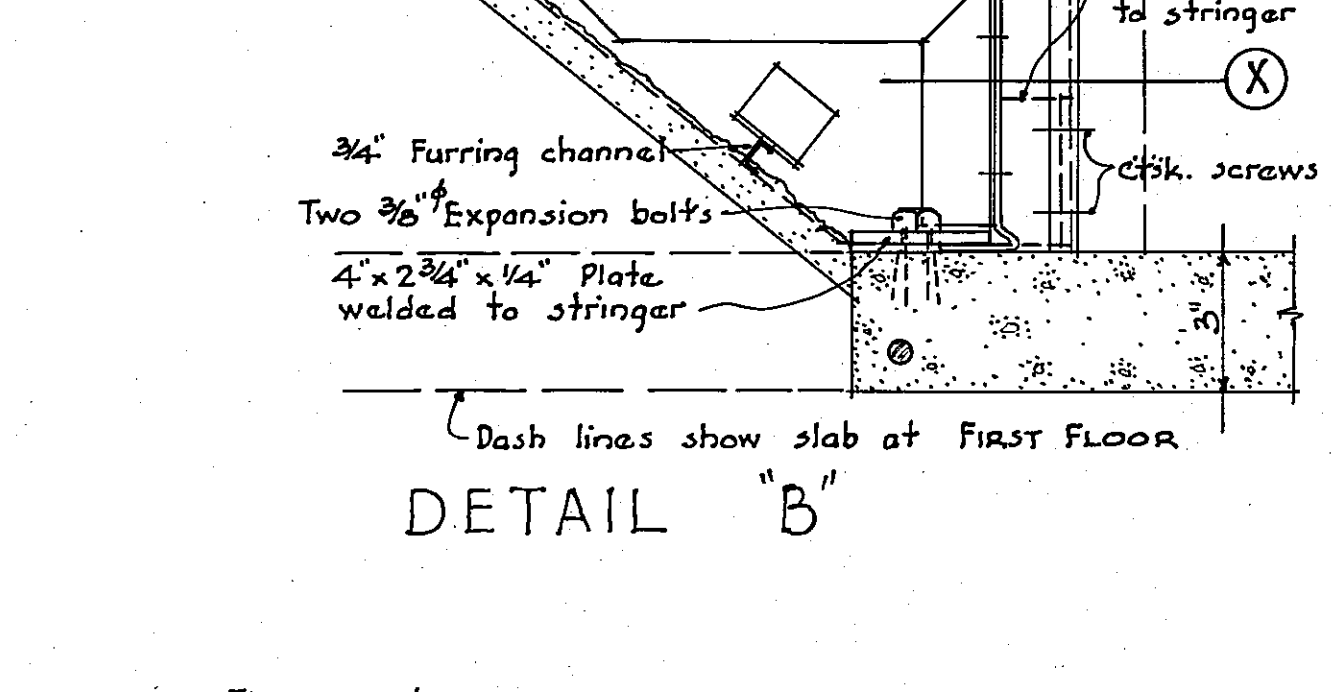
TYPICAL STAIR DETAIL

Scale - 3" = 1'-0"

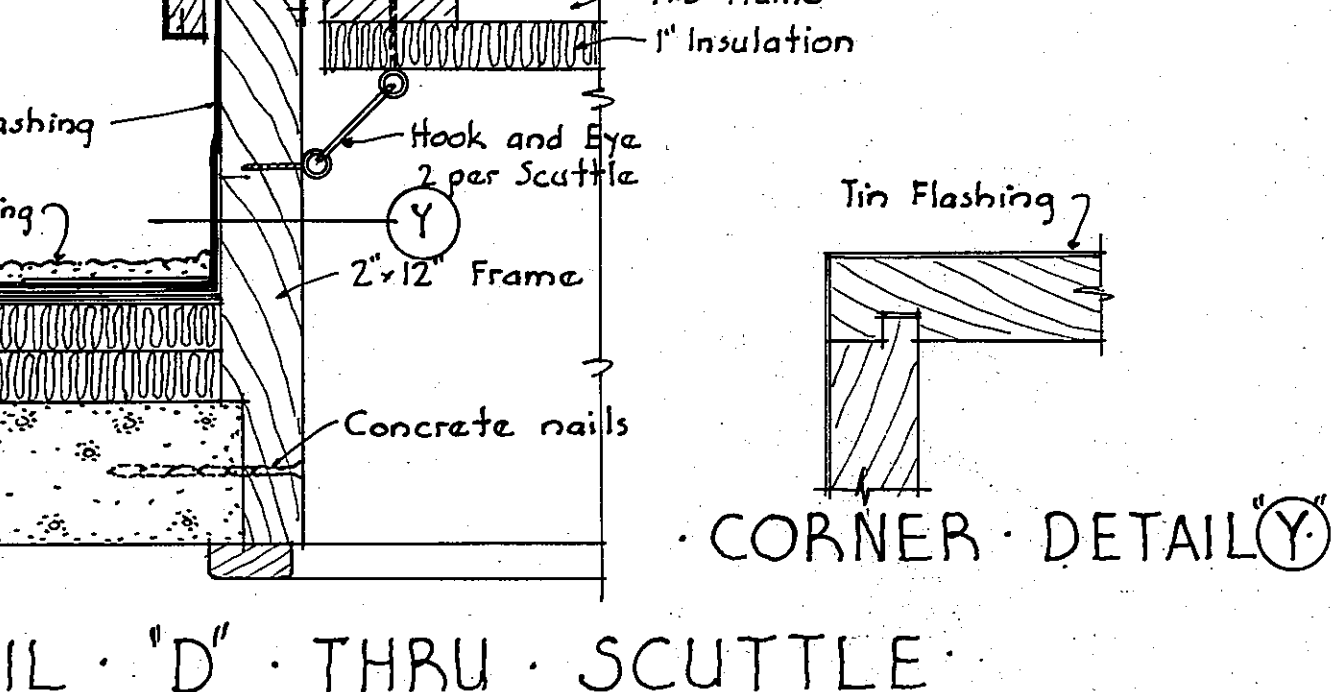


WALL RAIL DETAIL

Scale - 3" = 1'-0"



DETAIL B



CORNER DETAIL

DETAIL D THRU SCUTTLE

Scale - 3" = 1'-0"

SHEET A-23  
 REVISIONS  
 APPROVED BY ARCHITECTS:  
 H. CLAY PRIMEGOSSE - LANDSCAPE ARCHITECT  
 EDWARD L. CROSBY - MECHANICAL ENGINEER  
 VAN BENSENBERG P. SIME - STRUCTURAL ENGINEER  
 WILLIAM G. NOLTING - ARCHITECT - ASSOCIATES · JOHN H. SCARFF · FRANCIS H. JENCKS · ROBERT E. LEWIS · REGISTERED ARCHITECTS ·  
 HOUSING PROJECT · UNIT K-MD-2-5 · FOR THE HOUSING AUTHORITY OF BALTIMORE CITY ·  
 SCALE 1/4" = 1'-0" DETAILED PLANS 1/8" = 1'-0" 7th & 9th FLOORS - BLDG. UNITS E1 TO E4 TYPICAL FLOORS - BLDG. UNITS E1 TO E4 TYPICAL FLOORS - BLDG. UNITS E1 TO E4 TYPICAL STAIRS & SCUTTLE DETAILS  
 APPROVED BY ARCHITECTS:  
 H. CLAY PRIMEGOSSE - LANDSCAPE ARCHITECT  
 EDWARD L. CROSBY - MECHANICAL ENGINEER  
 VAN BENSENBERG P. SIME - STRUCTURAL ENGINEER