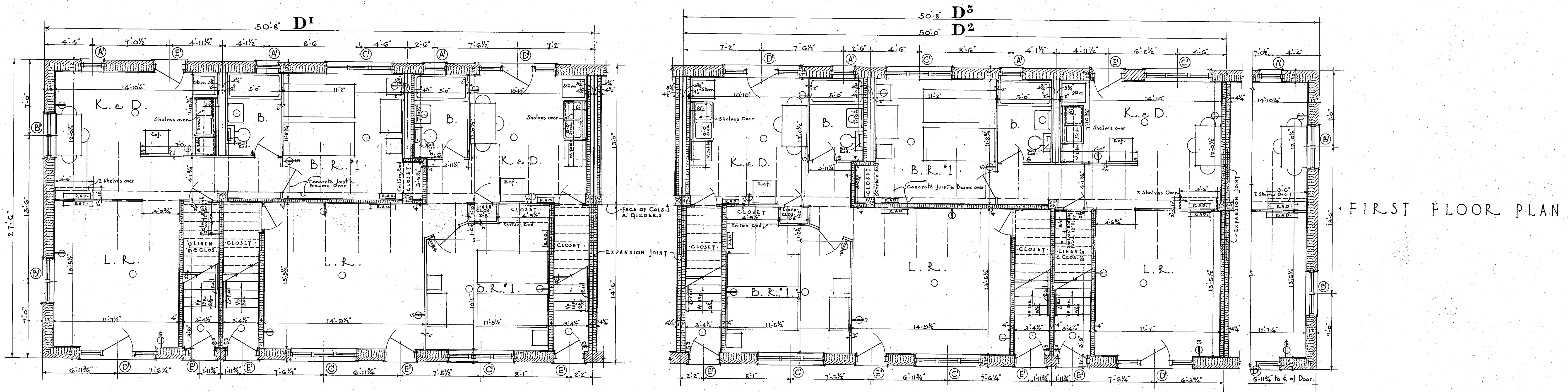
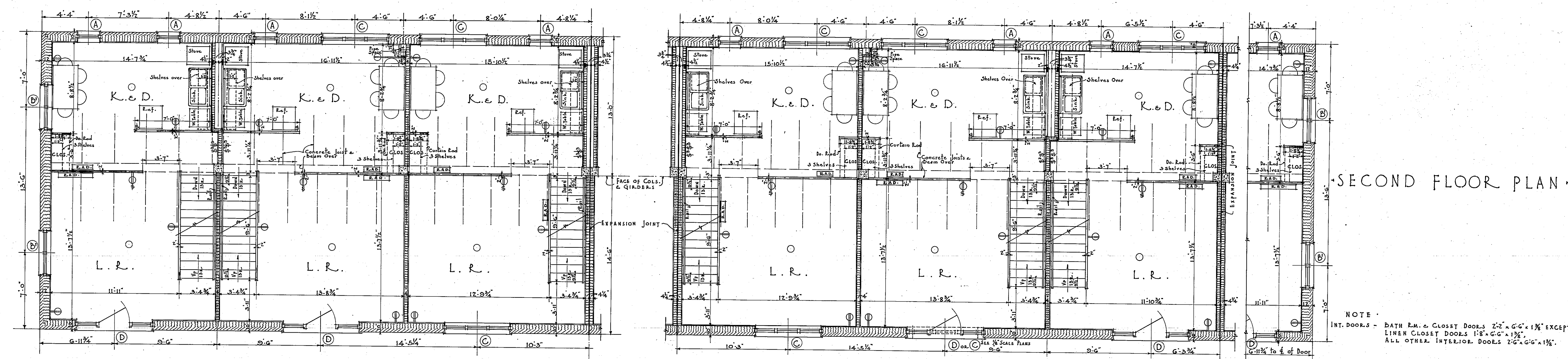


HOUSING PROJECT • UNIT K-MD-25 • FOR THE HOUSING AUTHORITY OF BALTIMORE CITY •
 WILLIAM G. NOLTING - ARCHITECT — ASSOCIATES — JOHN H. SCARFF — FRANCIS H. JENCKS — ROBERT E. LEWIS — REGISTERED ARCHITECTS •

APPROVED BY ARCHITECTS
 APPROVED BY B. H. A.
 APPROVED BY U. S. H. A.
 H. CLAY PRINCE — LANDSCAPE ARCHITECT.
 EDWARD L. CROSBY — MECHANICAL ENGINEER.
 VAN LENSSELAER, P. JAKE — STRUCTURAL ENGINEER.

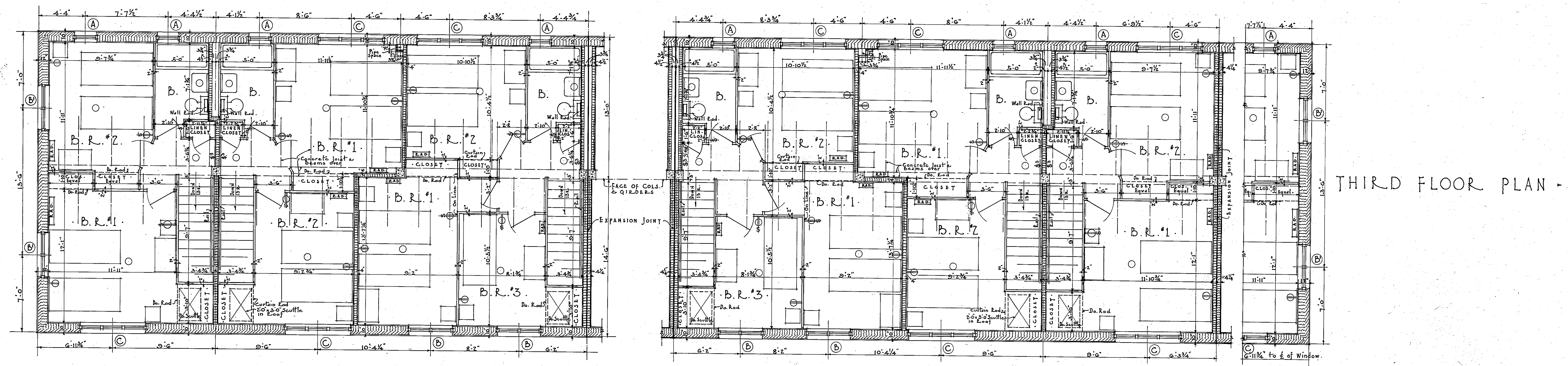


FIRST FLOOR PLAN



SECOND FLOOR PLAN

NOTE:
 INT. DOORS - BATH RM. & CLOSET DOORS 2'-2" x 6'-0" @ 1 1/2" EXCEPT
 LINEN CLOSET DOORS 1'-8" x 6'-0" @ 1 1/2"
 ALL OTHER INTERIOR DOORS 2'-0" x 6'-0" @ 1 1/2"



THIRD FLOOR PLAN

SCALE 1/4" = 1'-0" DETAILED PLANS 1ST 2ND & 3RD FLOORS - BLDG. UNITS D1 TO D3