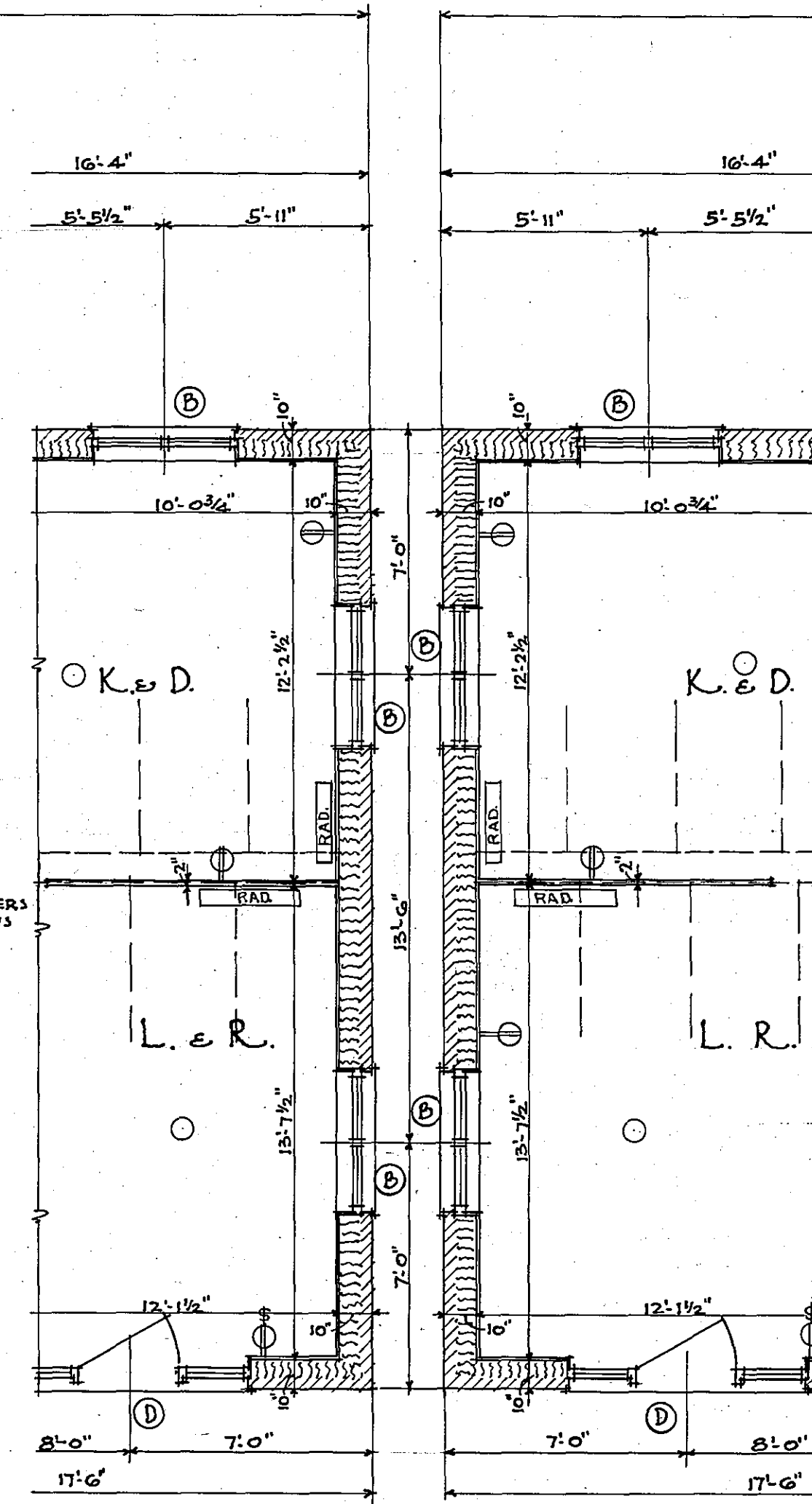
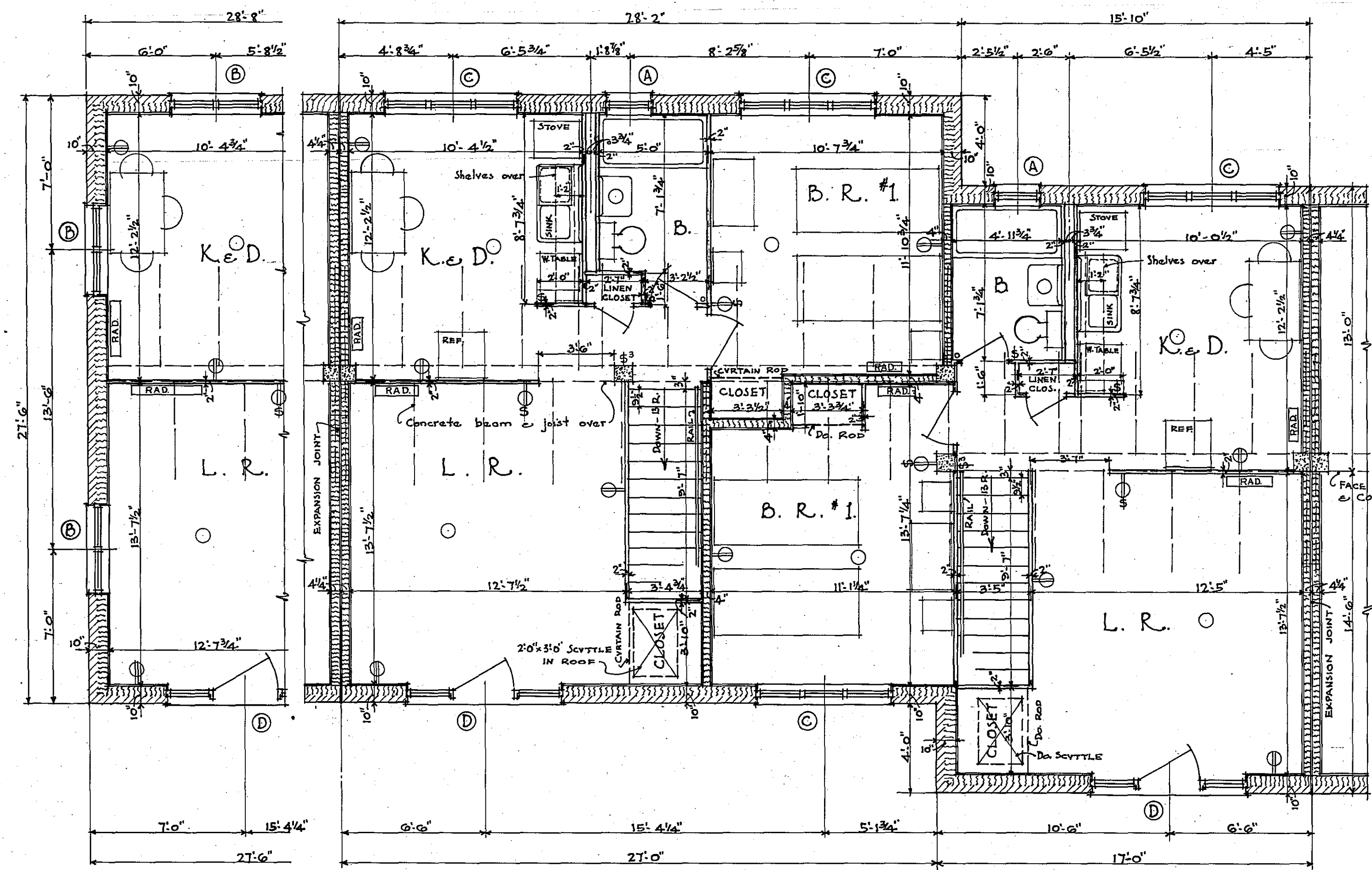
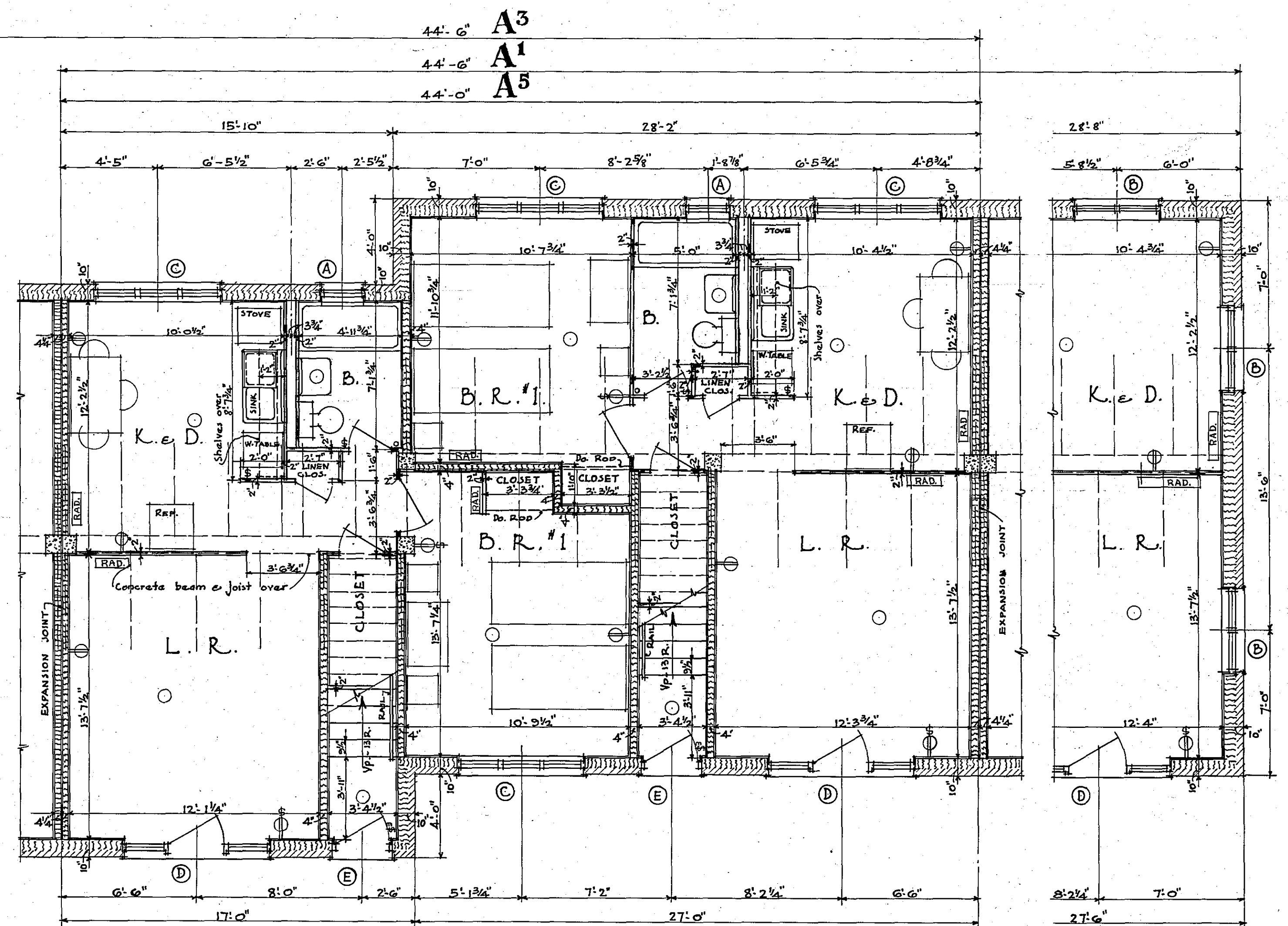


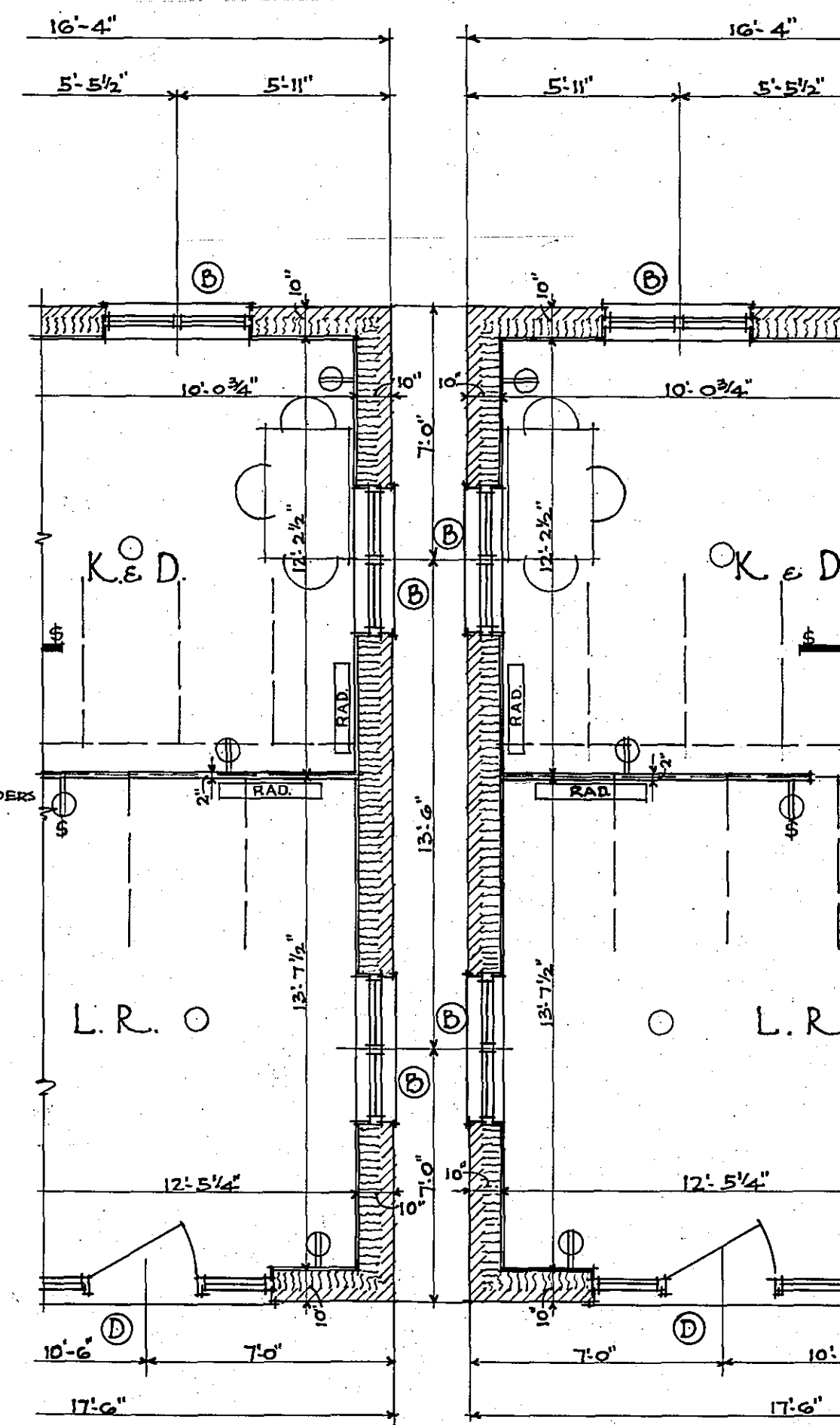
FIRST FLOOR PLAN



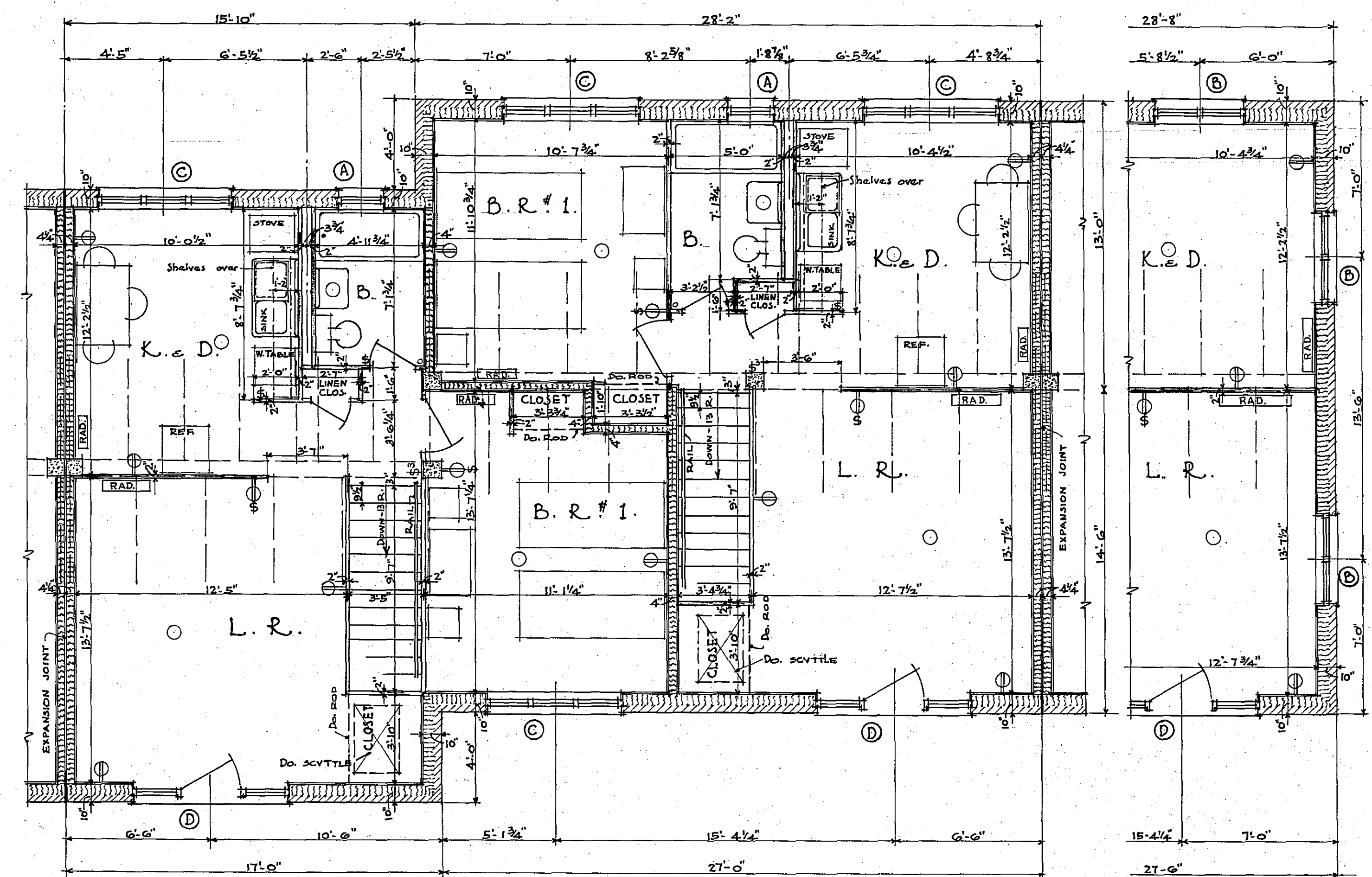
FIRST FLOOR PLAN



SECOND FLOOR PLAN



SECOND FLOOR PLAN



NOTE:
 INTERIOR DOORS - BATH RM & CLOSET DOORS, 2'-2" x 6'-0" x 1 3/8"
 EXCEPT LINEN CLOSET DOORS, 5'-2" x 6'-0" x 1 3/8"
 ALL OTHER INTERIOR DOORS, 2'-0" x 6'-0" x 1 3/8"

SCALE - 1/4" = 1'-0"



HOUSING PROJECT - UNIT K-MD-2-5 - FOR THE HOUSING AUTHORITY OF BALTIMORE CITY
 WILLIAM G. NOLTING - ARCHITECT - ASSOCIATES · JOHN H. SCARFF · FRANCIS H. JENCKS · ROBERT E. LEWIS · REGISTERED ARCHITECTS

APPROVED BY ARCHITECTS:
 APPROVED BY B. H. A.
 APPROVED BY U. S. H. A.
 H. CLAY PRINCE - LANDSCAPE ARCHITECT
 EDWARD L. CROSBY - MECHANICAL ENGINEER
 VAN E. ENSELAE - P. JAME - STRUCTURAL ENGINEER

SCALE 1/4" = 1'-0" DETAILED PLANS 1ST & 2ND FLOORS - BLDG. UNITS A1 TO A6