

Montgomery College Catherine and Isiah Leggett Math and Science Building



BP No. 3 – Concrete, Structural Steel, Waterproofing – Pre-Bid Conference

Today's Agenda

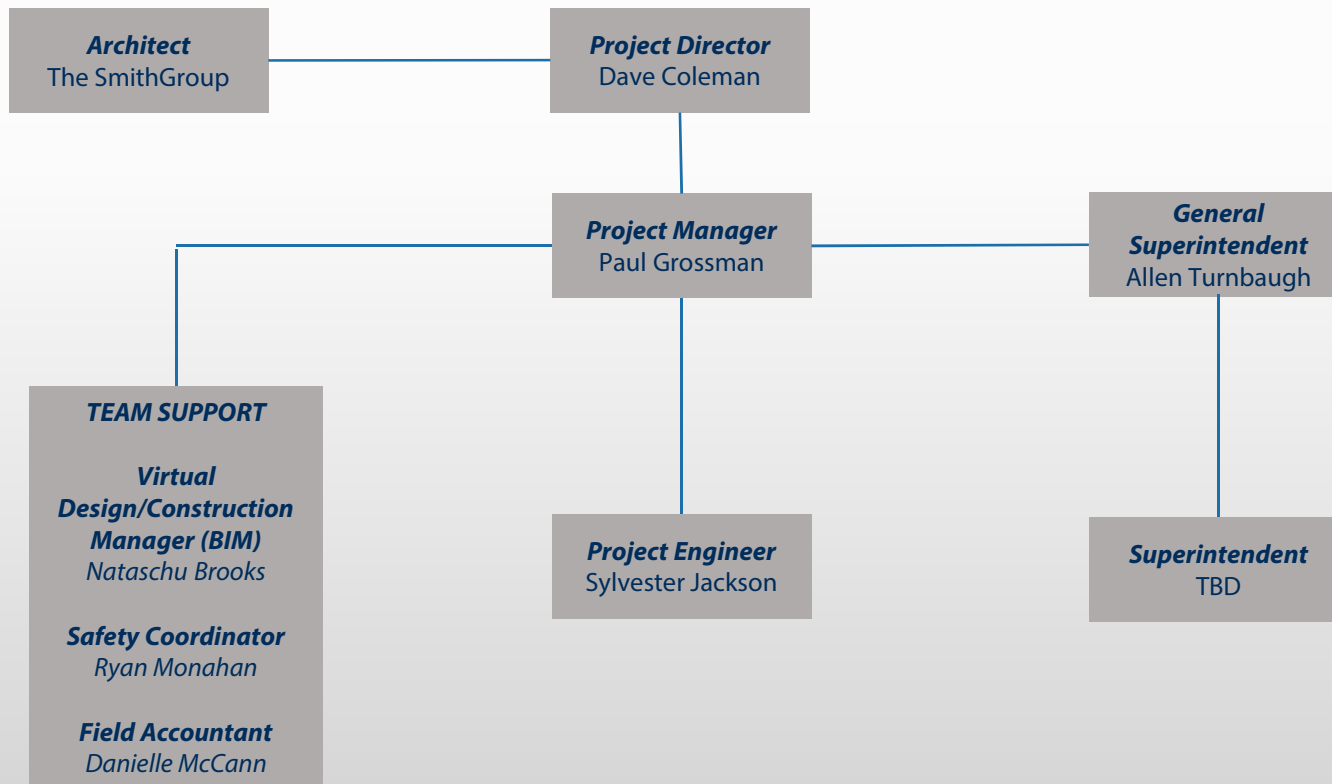
- AE, Owner & CM Team Introduction
- Project Overview
- Bid Packages
- Site Logistics
- Safety
- MBE/WBE Requirements
- Key Dates
- Prequalification
- Bidding Requirements
- Scope Review
- Questions & Site Visit



Project Team

- Owner: Montgomery College
 - Montgomery College TP/SS VP: Brad Stewart
 - Director of Project Management: Kevin Redinger
 - Senior Project Manager: Lisa Thomas-Kaonohi
 - Purchasing Manager: Judy Zhu
- Construction Manager: Barton Malow
 - Project Director: David Coleman
 - Project Manager: Paul Grossman
 - General Superintendent: Allen Turnbaugh
 - Project Engineer: Sylvester Jackson
 - Estimator: Rob McCahill
- Architect: The SmithGroup
 - Architects: Kevin Johnson, Wade Fuh, & Bill Jones

Construction Team



Project Overview

- \$62.8M Construction Budget
- New Math and Science Building
- 100,000 SF
- Seeking LEED Silver
- DLLR Prevailing Wage
- Sales Tax MUST be included

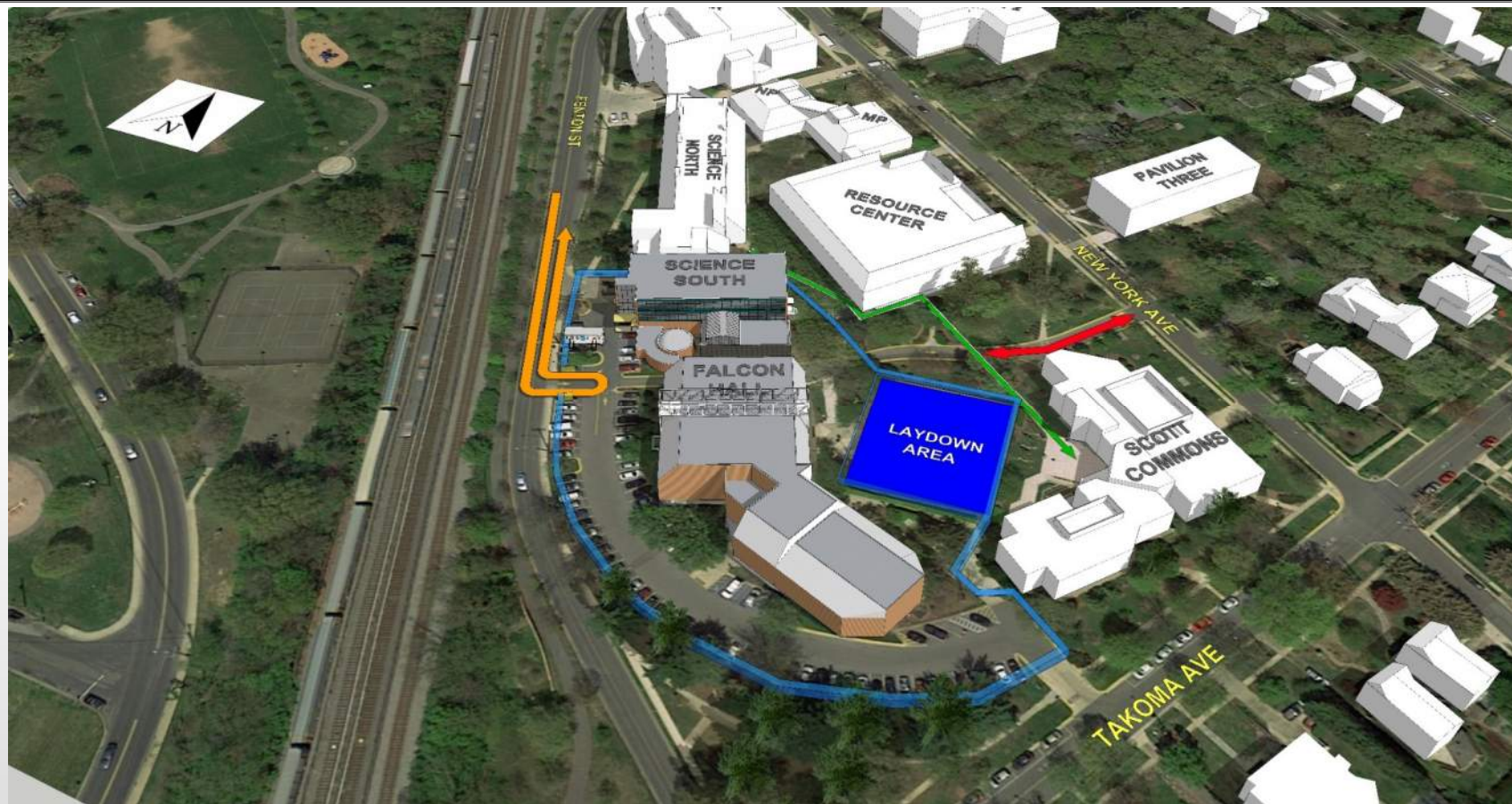
Bid Packages

BP 3.01 – Concrete

BP 3.02 – Structural Steel

BP 3.03 – Waterproofing

Site Logistics – BP No. 3



Key ● Construction Traffic Route

● Temporary Chain Link Fence

● Pedestrian Walkways

● Fire Dept./Emergency Vehicle Route

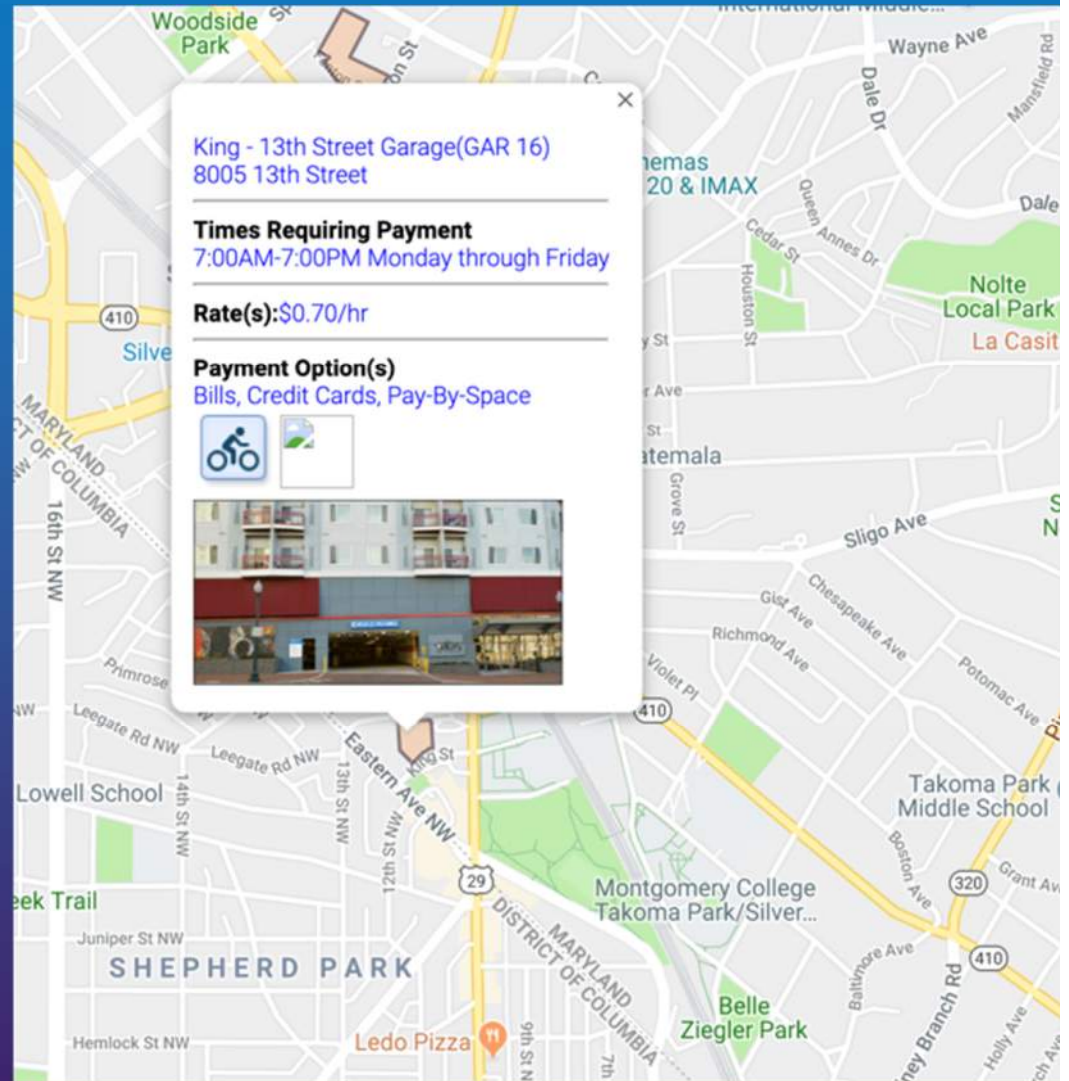
Employee Parking

During abatement phase – employee parking will be within fence area.

For remaining phases, limited onsite parking will be provided, but employees are encouraged to use public transportation.

Contractors will park in public parking as indicated here:

<https://www2.montgomerycountymd.gov/gisparking/parkingpublicmap.htm>



Safety

- Barton Malow Co. Safety Manual
 - Stretch and Flex
 - Gloves/PPE
 - Safety Program Enforcement 000810
- Project Specific Challenges
 - Concerned neighbors
 - Occupied campus
 - Daily clean-up / composite crew
- Follow State & Federal Hazardous Materials Guidelines

MBE Participation

- Refer to section 000861 for specific MBE requirements for each bid package
- BP 3.01 – Concrete 30% MBE Participation
- BP 3.02 – Structural Steel 30% MBE Participation
- BP 3.03 – Waterproofing 30% MBE Participation
- Subgoals
 - African American – 7%
 - Asian American – 4%

Key Dates

Bid Package No. 3	Start	Finish
Bid Period	3/24/2020	4/17/2020
Pre-Bid Conference	4/1/2020	4/3/2020
RFIs due		4/3/2020
Last Addendum Issued		4/10/2020
Bids Due at 2pm		4/17/2020
Bid Package No. 3 Early Submittals		8/5/2020
Bid Package 3 Work	10/15/2020	6/29/2021

Prequalification

Barton Malow Online Prequalification: To begin the process, visit www.bartonmalow.com/subcontractors.



Please note all prequalification items must be completed prior to the bid date. **If Bidder is not pre-qualified, bid will be deemed non-responsive.**

Bidding Requirements

- Instructions to Bidders
- **ALL BIDDERS MUST BE PRE-QUALIFIED!!!**
- All bidders are to review the standard BMC General Terms and Conditions prior to submission of bid.
- Complete Bid Proposal Form
 - 1 hard copies, 1 electronic copy on a flash drive
- Base Bid, Unit Prices, Labor Rates
- Alternates
- MBE Forms Due Upon Request
- Post Bid – 4/20/20 through 5/8/20

Questions?

- Questions and Answers
 - Please follow all specific questions up with formal RFIs, all RFIs should be submitted on the RFI form (see forms folder within the bid documents)
 - Pre-bid RFIs are due Friday, 4/3/20 by 12:00 PM (noon)
 - Follow-up questions can be addressed to paul.grossman@bartonmalow.com